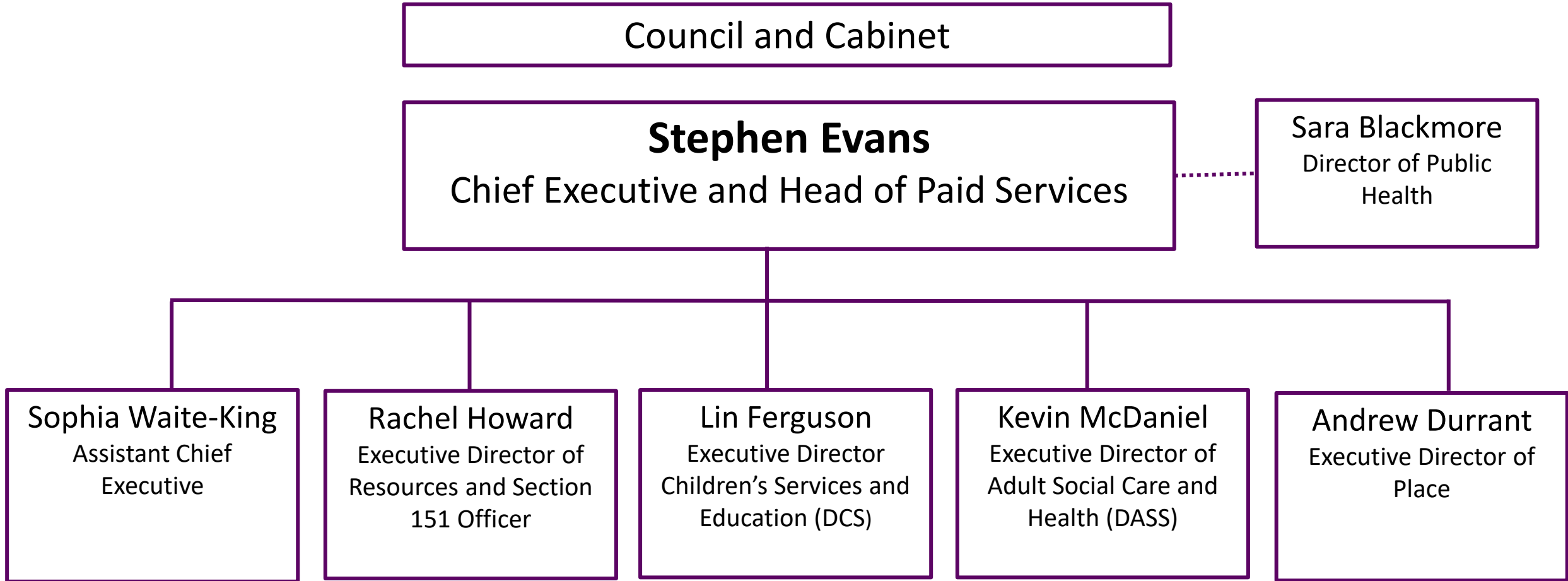


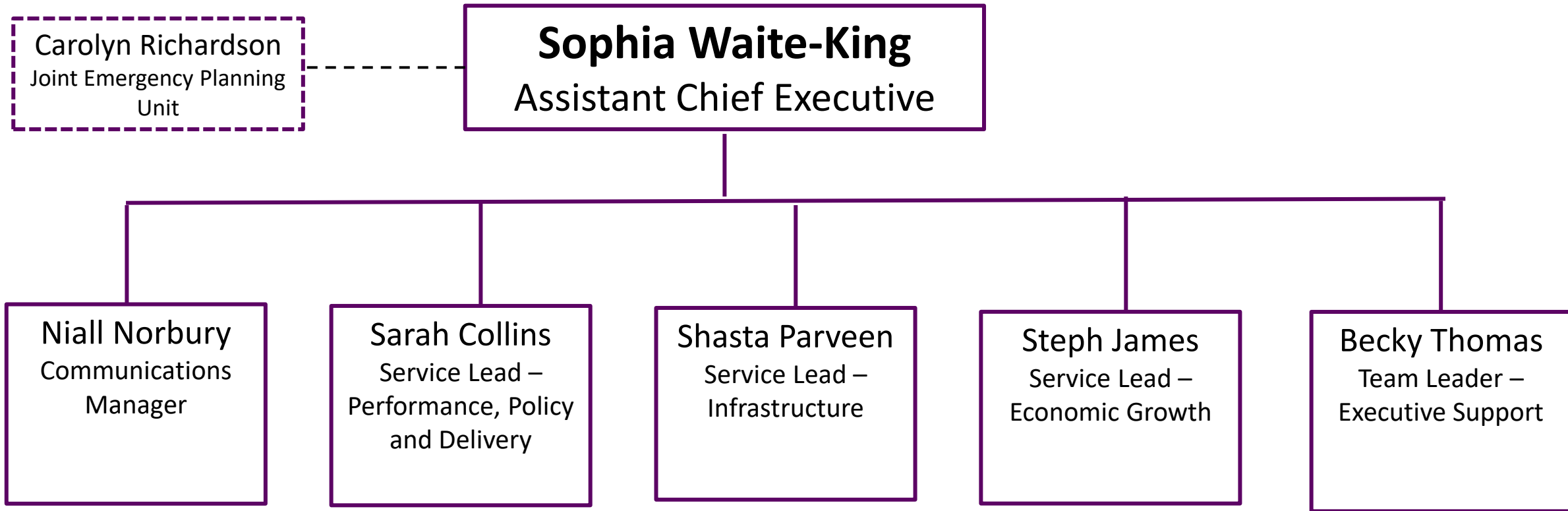


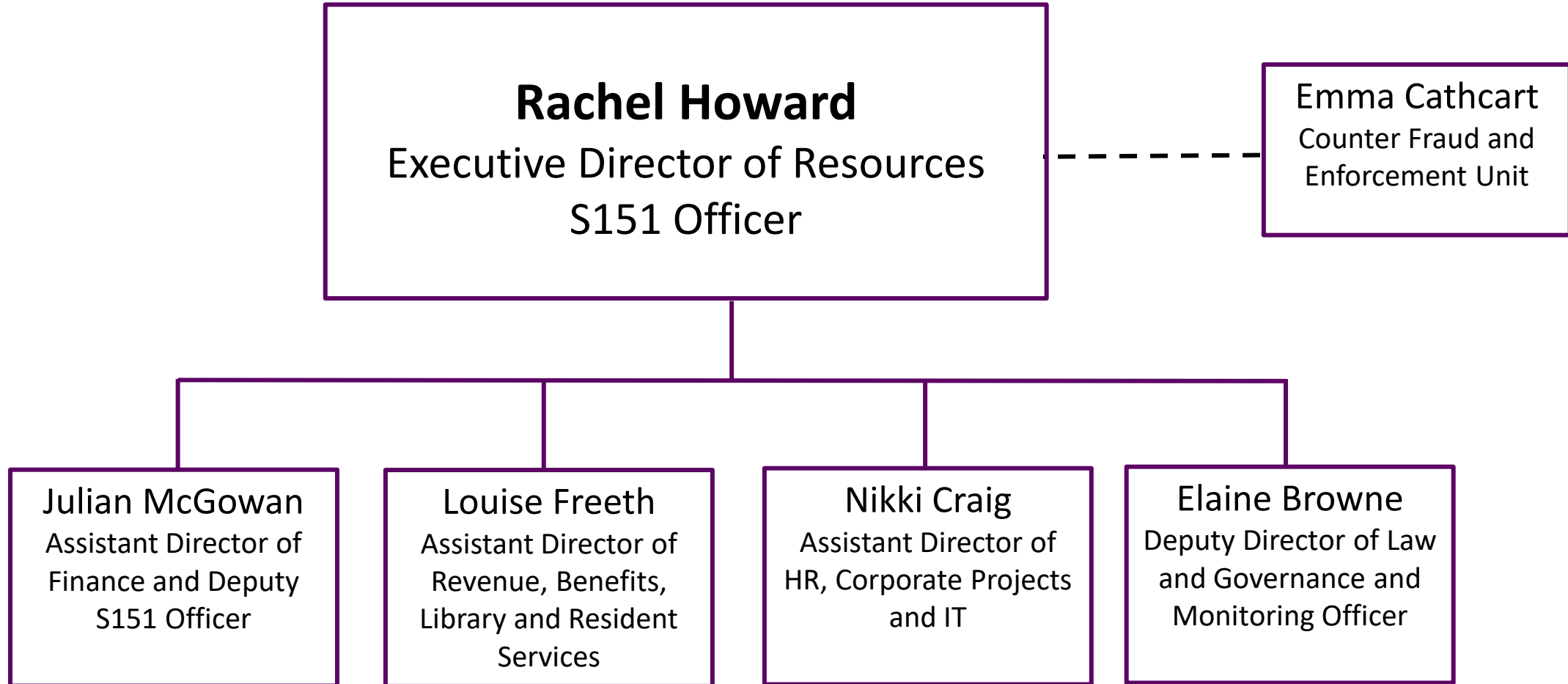
# Royal Borough of Windsor and Maidenhead

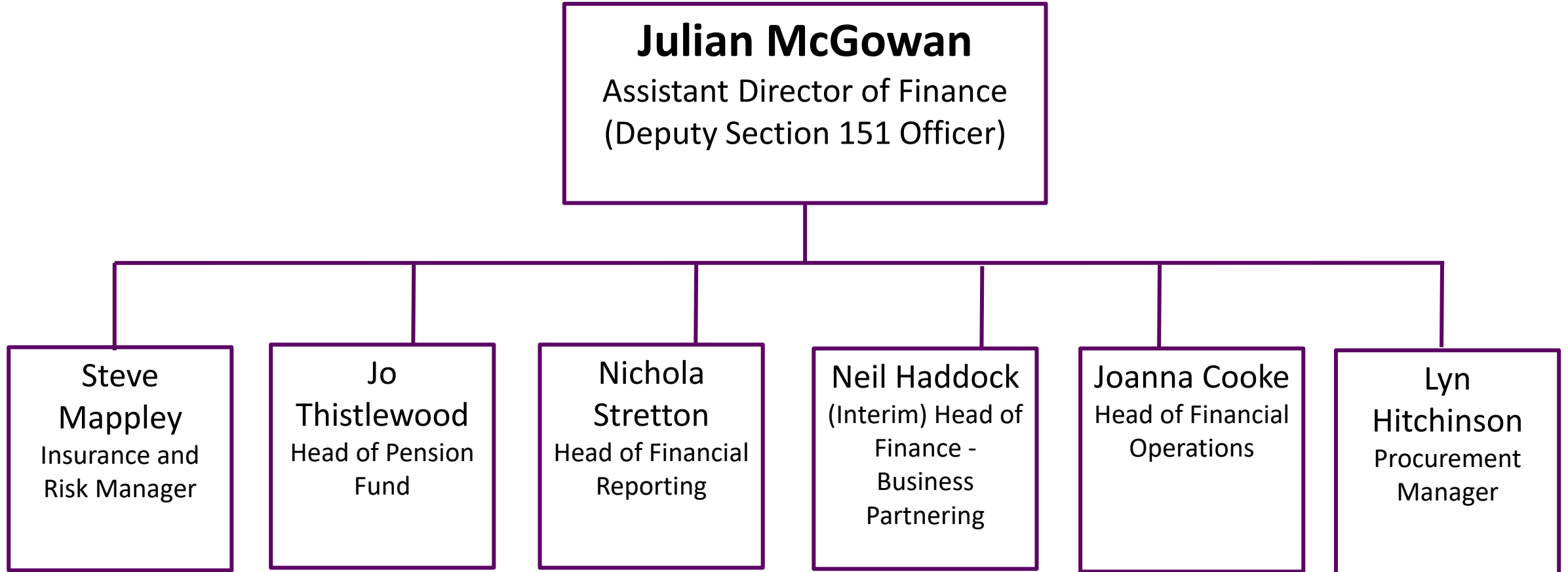
## Organisation Chart

*May 2026*











**Louise Freeth**  
Assistant Director of Revenue, Benefits, Library and Resident Services



**Elaine Henderson**  
Service Lead – Revenues

**Sarah Sneyd-Jones**  
Service Lead – Assessment and Social Care

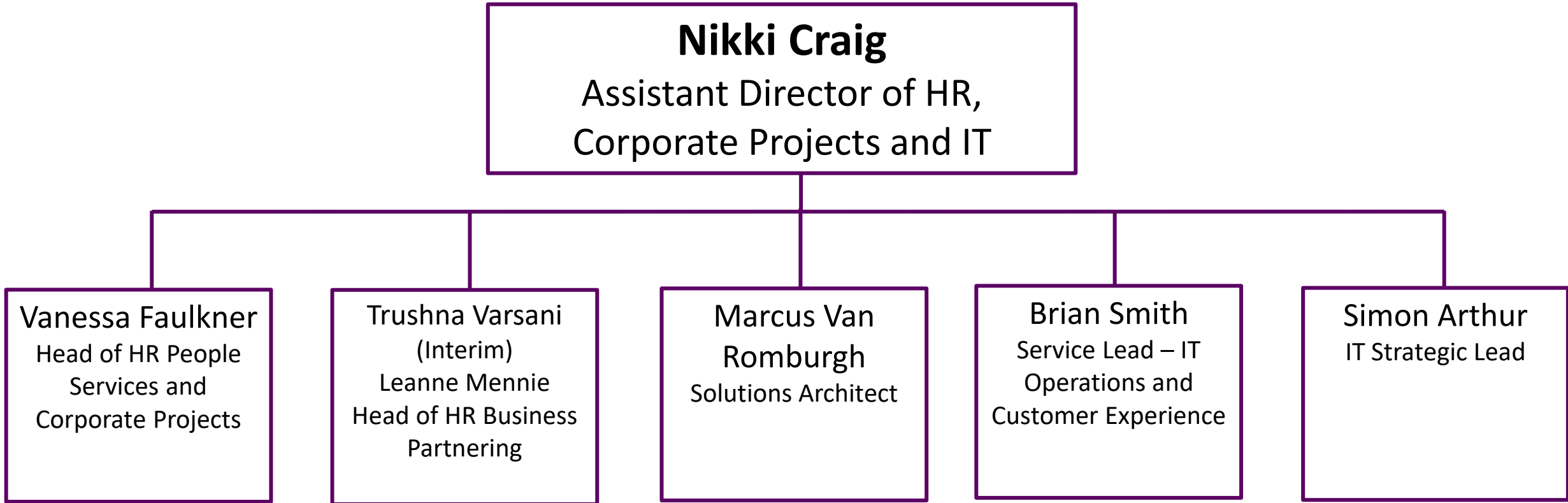
**Angela Huisman**  
Service Lead - Library and Resident Contact Lead (Face to Face)

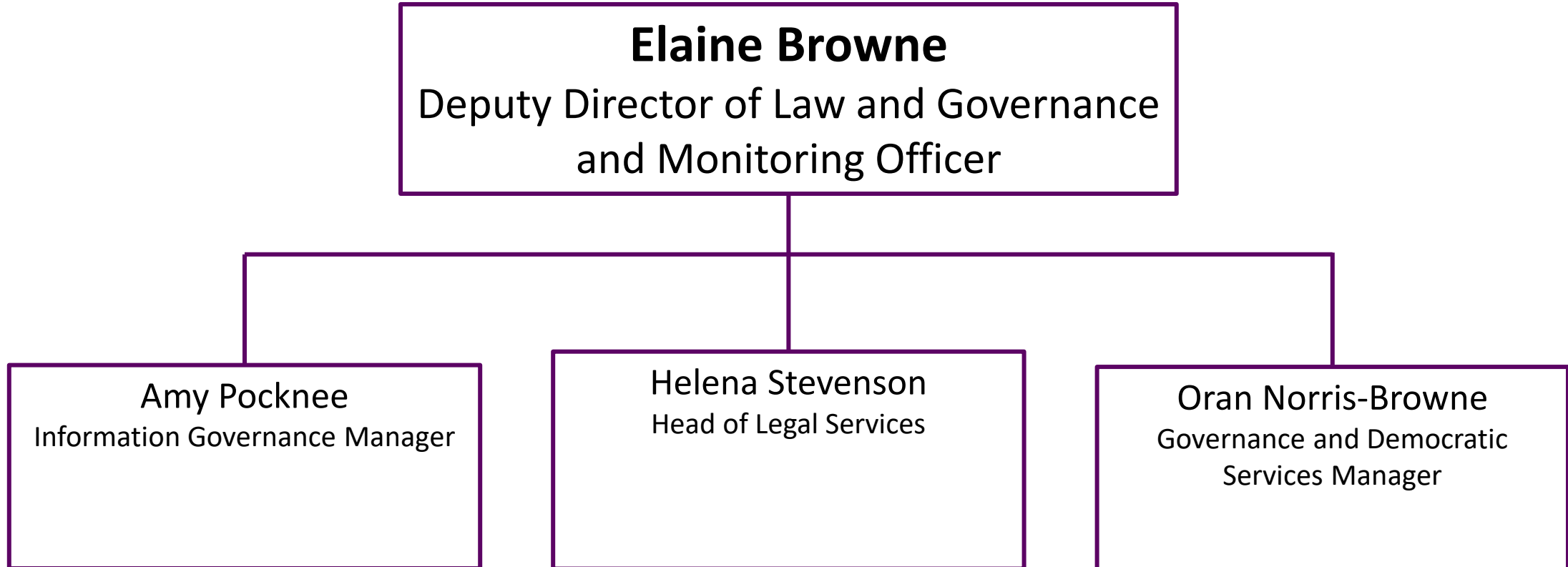
**Andrea O'Brien**  
Superintendent Registrar

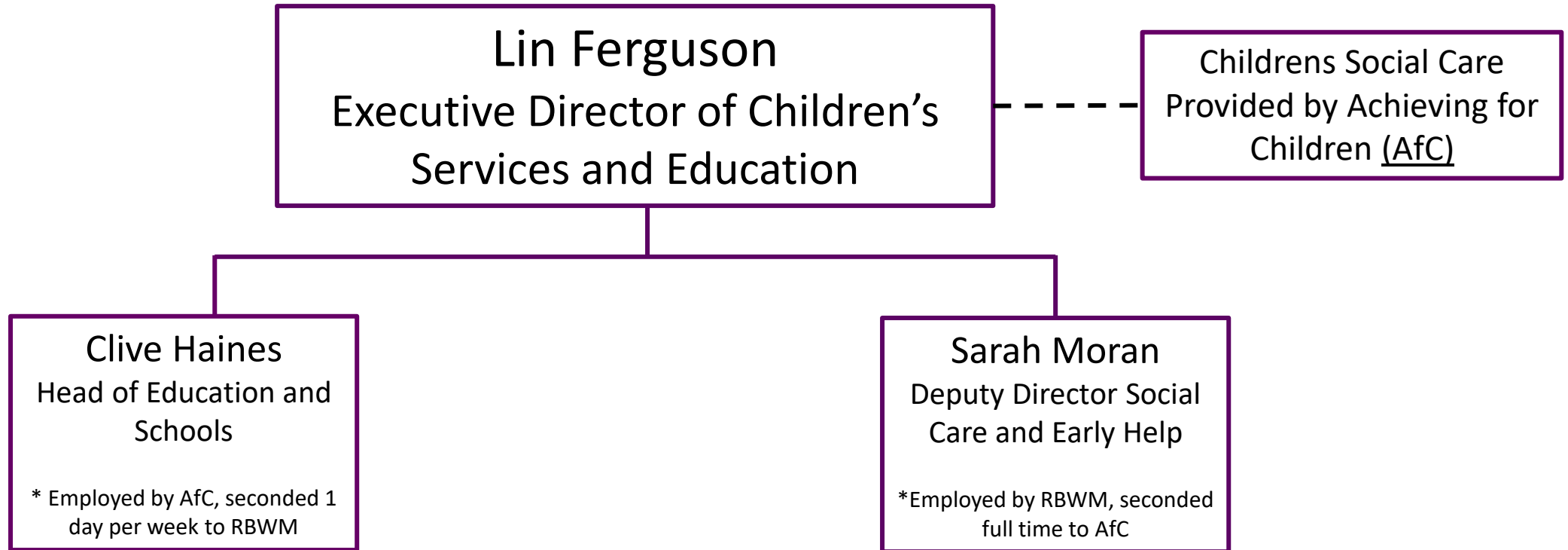
**Katie Blair**  
Service Lead - Resident Contact Lead (Face to Face)

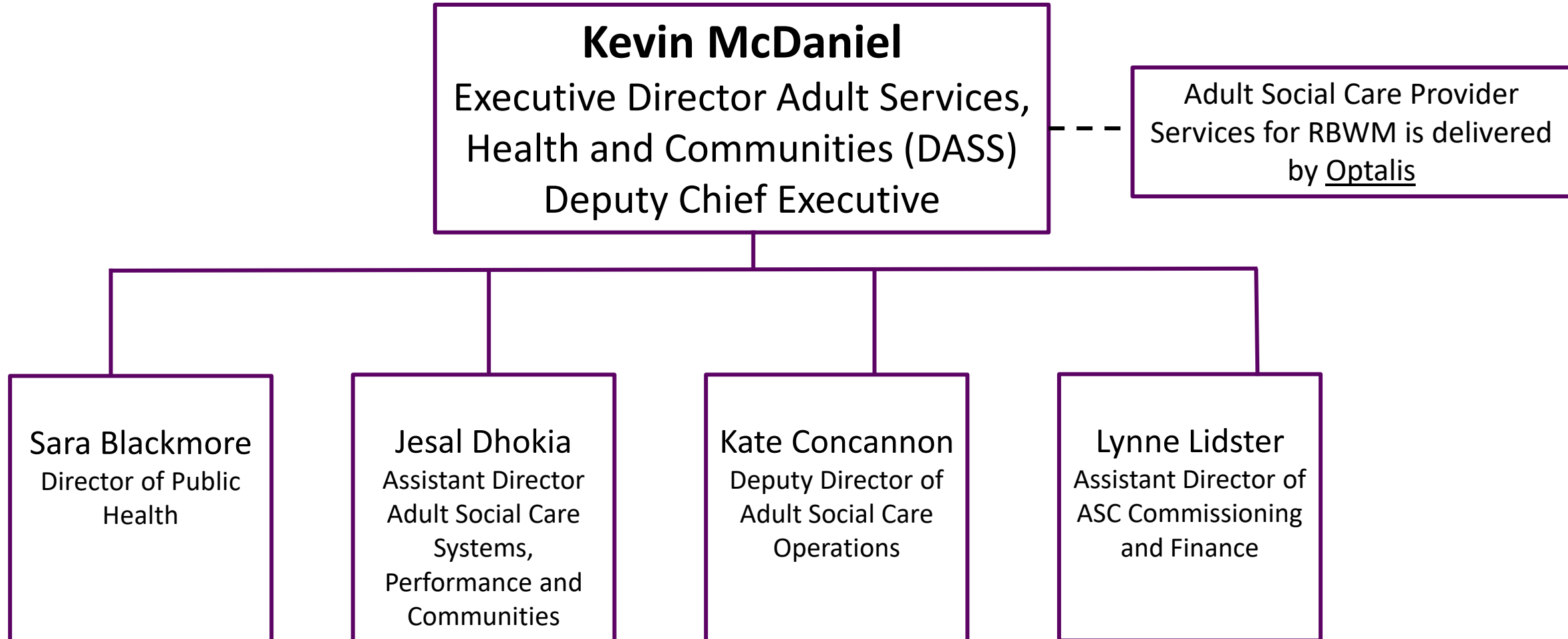
**Viv Webster**  
Superintendent Registrar

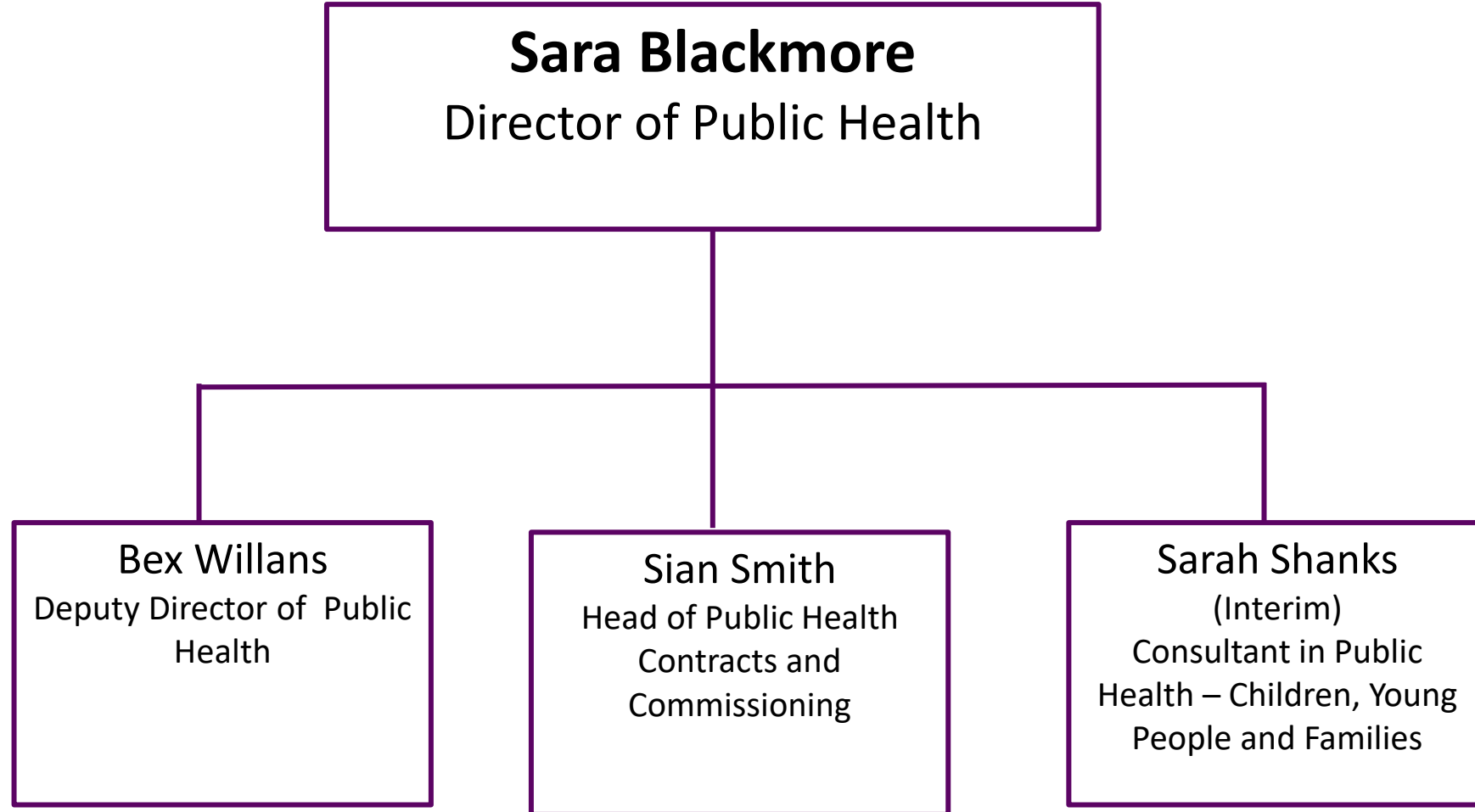
**Stuart Orchard**  
Applications Administrator













**Jesal Dhokia**  
Assistant Director Adult Social Care  
Systems, Performance and Communities

Sumayyah Zeib  
Community  
Prevention Manager

Allison Killick  
Business Systems  
Manager

Miranda  
Cruickshank  
Data, Performance and  
Engagement Manager

Vacant  
Digital Innovation  
and Transformation  
Lead

Diane Lindsay  
Executive Assistant /  
Office Manager



**Kate Concannon**  
Deputy Director of Adult Social  
Care Operations

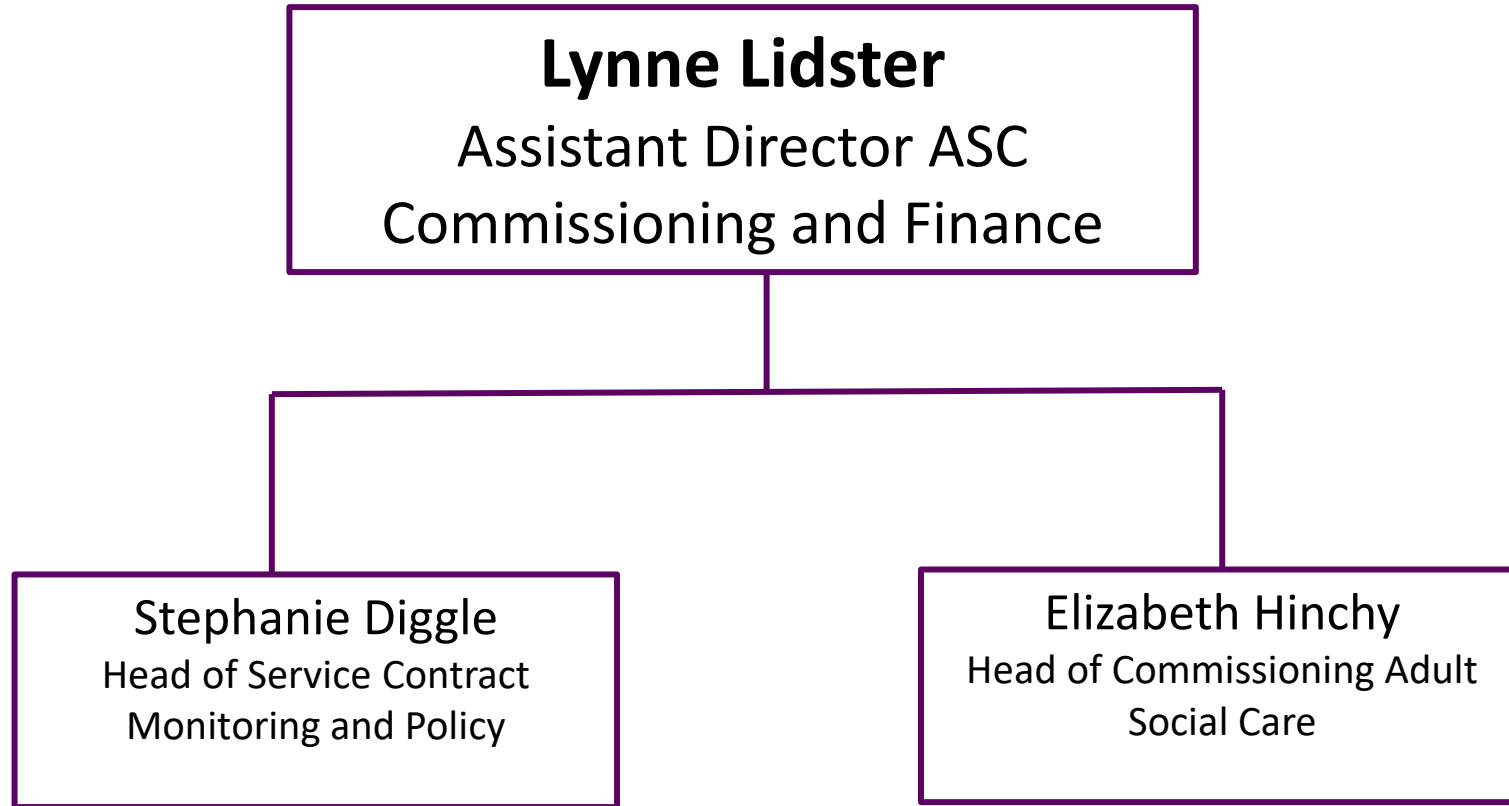
Louise Kerfoot  
Head of Integrated  
Learning Disability  
Services

Suzanne Michael  
Service Team Manager  
– Mental Wellbeing  
Service

Lucy Underdown  
Head of Quality and  
Safeguarding

Diane Macdonald  
Head of Community  
Services

Jenny Plummer  
Head of Service –  
System Flow and Care  
Integration





**Andrew Durrant**  
Executive Director of Place  
Services

**Alysse Strachan**  
Assistant Director of  
Neighbourhood Services

**Adrien Waite**  
Assistant Director of  
Planning

**Chris Joyce**  
Assistant Director of  
Placemaking, Property  
and Sustainability

**Amanda Gregory**  
Assistant Director  
Housing and Public  
Protection

