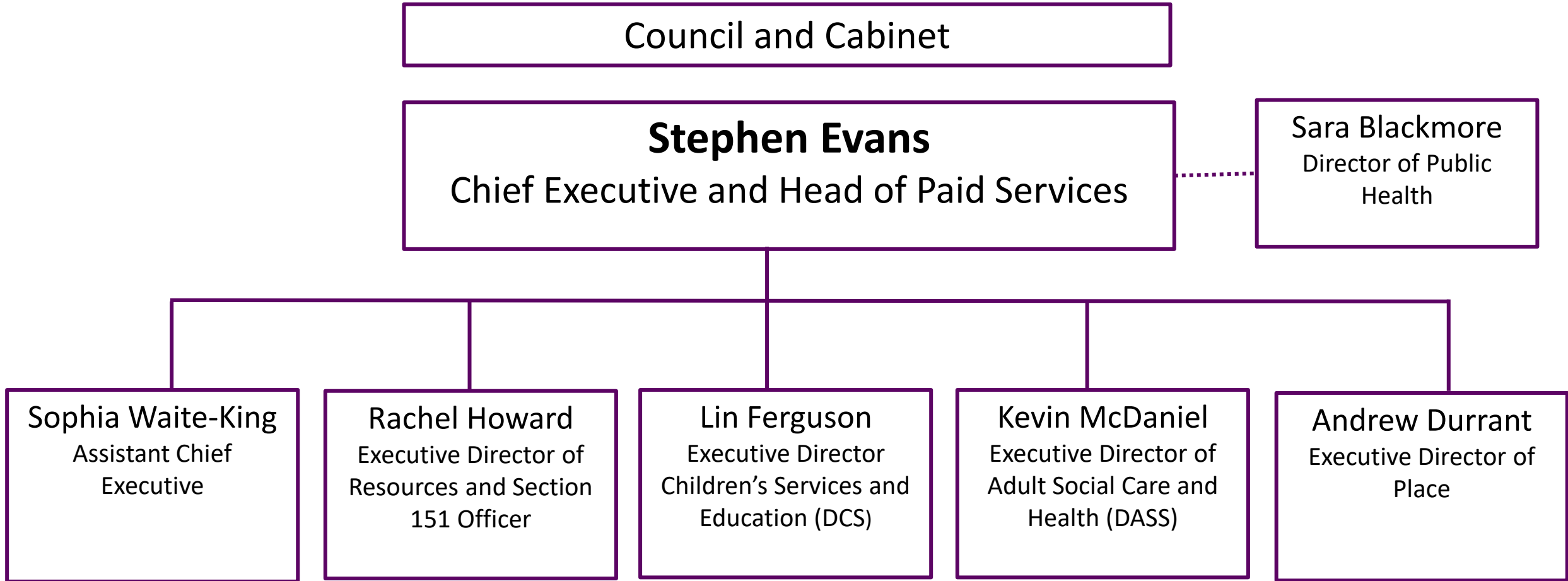


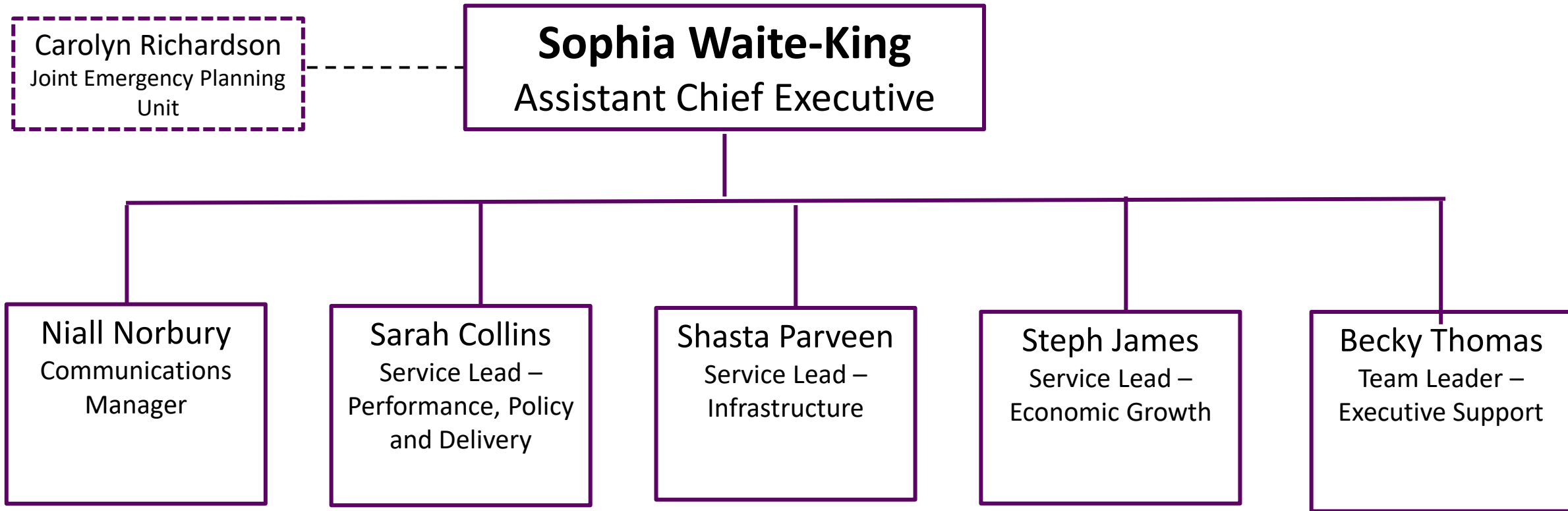


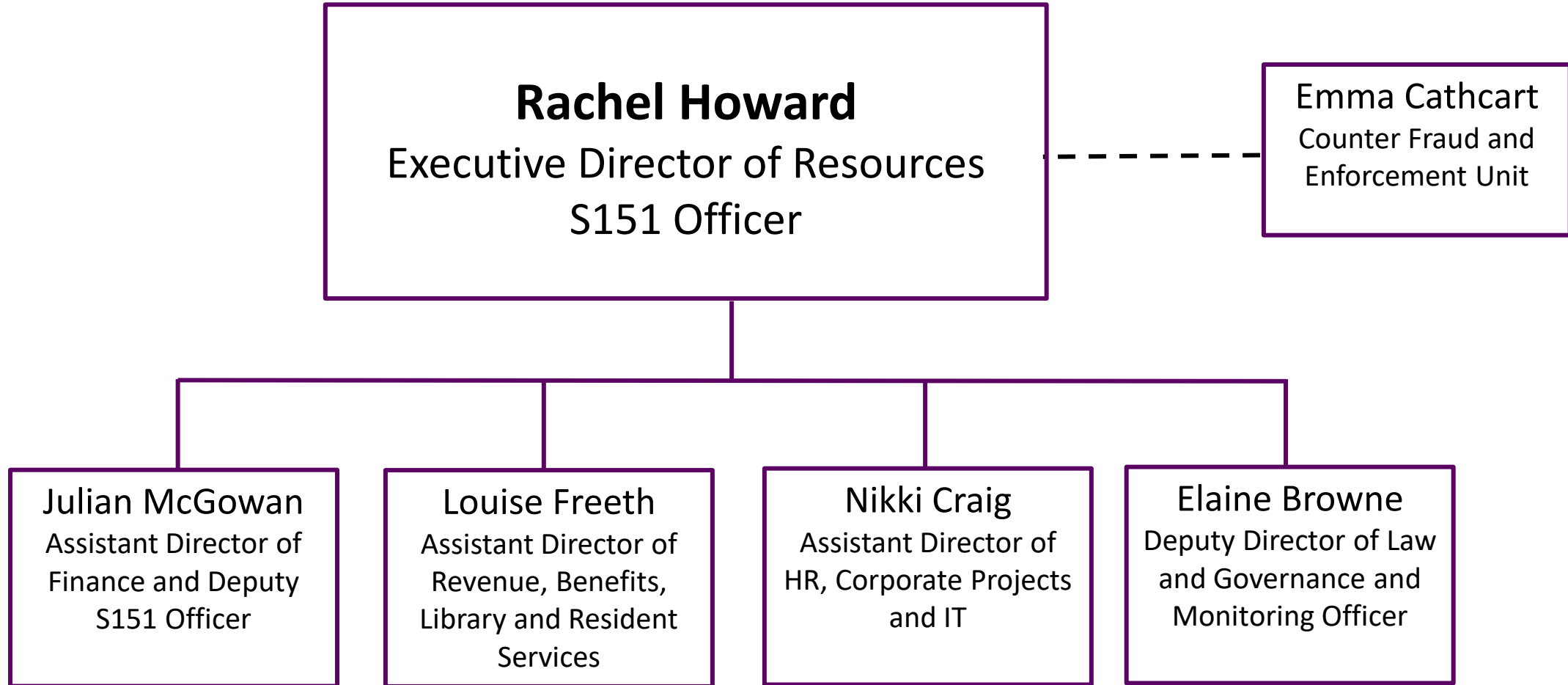
Royal Borough of Windsor and Maidenhead

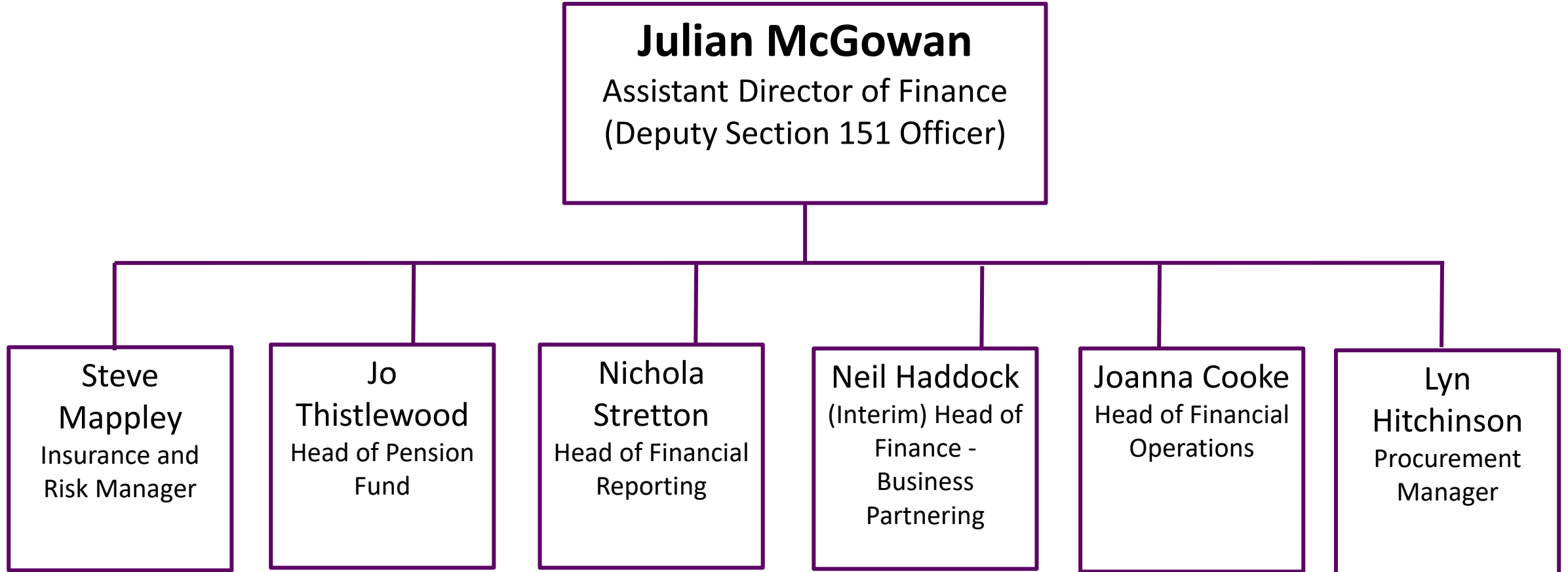
Organisation Chart

May 2026











Louise Freeth
Assistant Director of Revenue, Benefits, Library and Resident Services



Elaine Henderson
Service Lead – Revenues

Sarah Sneyd-Jones
Service Lead – Assessment and Social Care

Angela Huisman
Service Lead - Library and Resident Contact Lead (Face to Face)

Andrea O'Brien
Superintendent Registrar

Katie Blair
Service Lead - Resident Contact Lead (Face to Face)

Viv Webster
Superintendent Registrar

Stuart Orchard
Applications Administrator



Nikki Craig
Assistant Director of HR,
Corporate Projects and IT

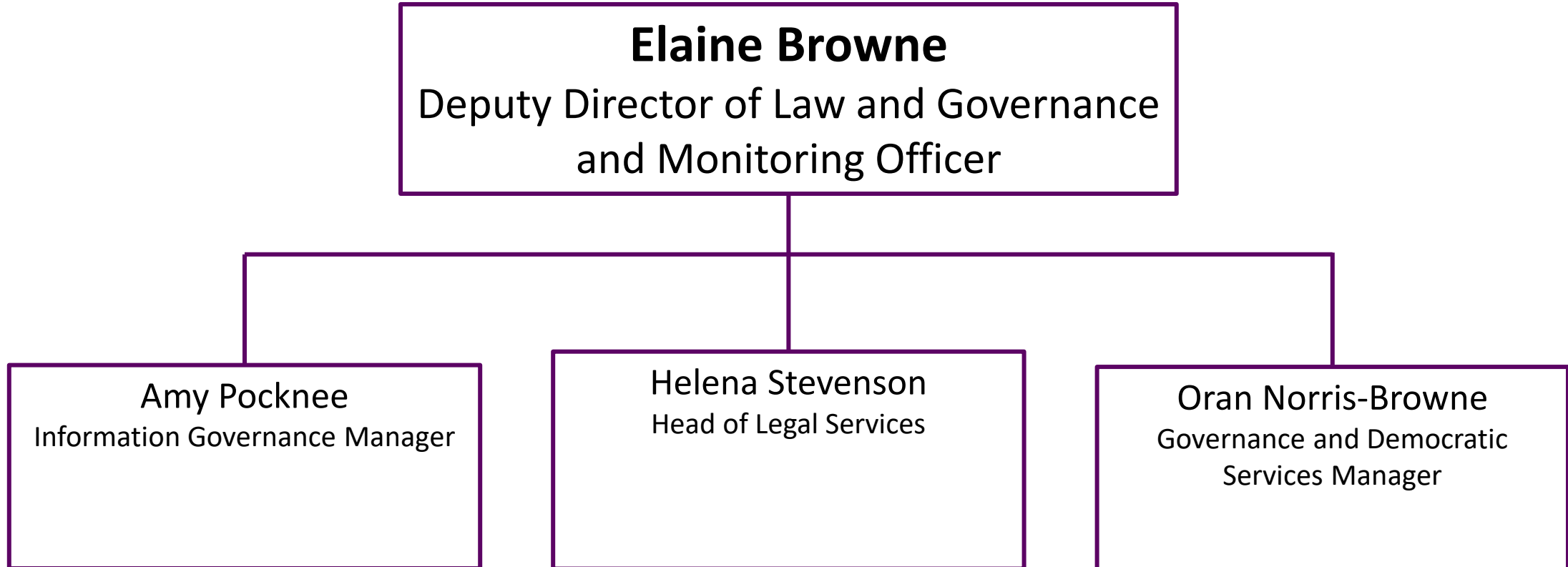
Vanessa Faulkner
Head of HR People
Services and
Corporate Projects

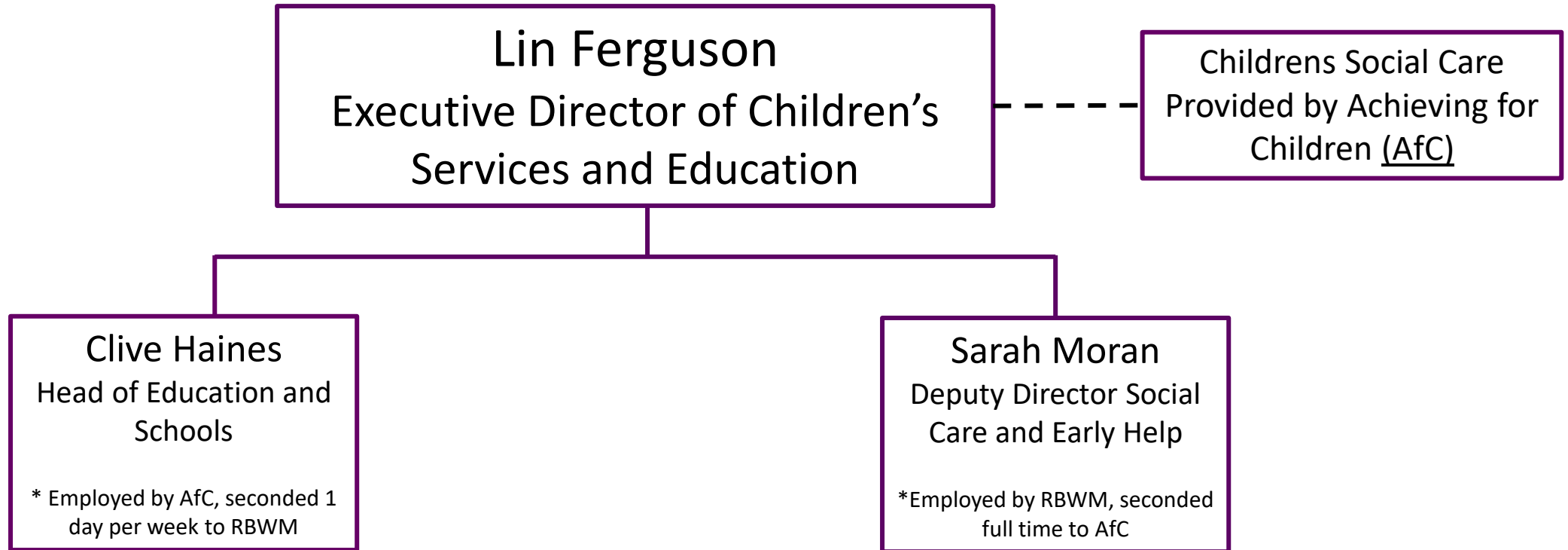
Trushna Varsini
(Interim)
Leanne Mennie
Head of HR Business
Partnering

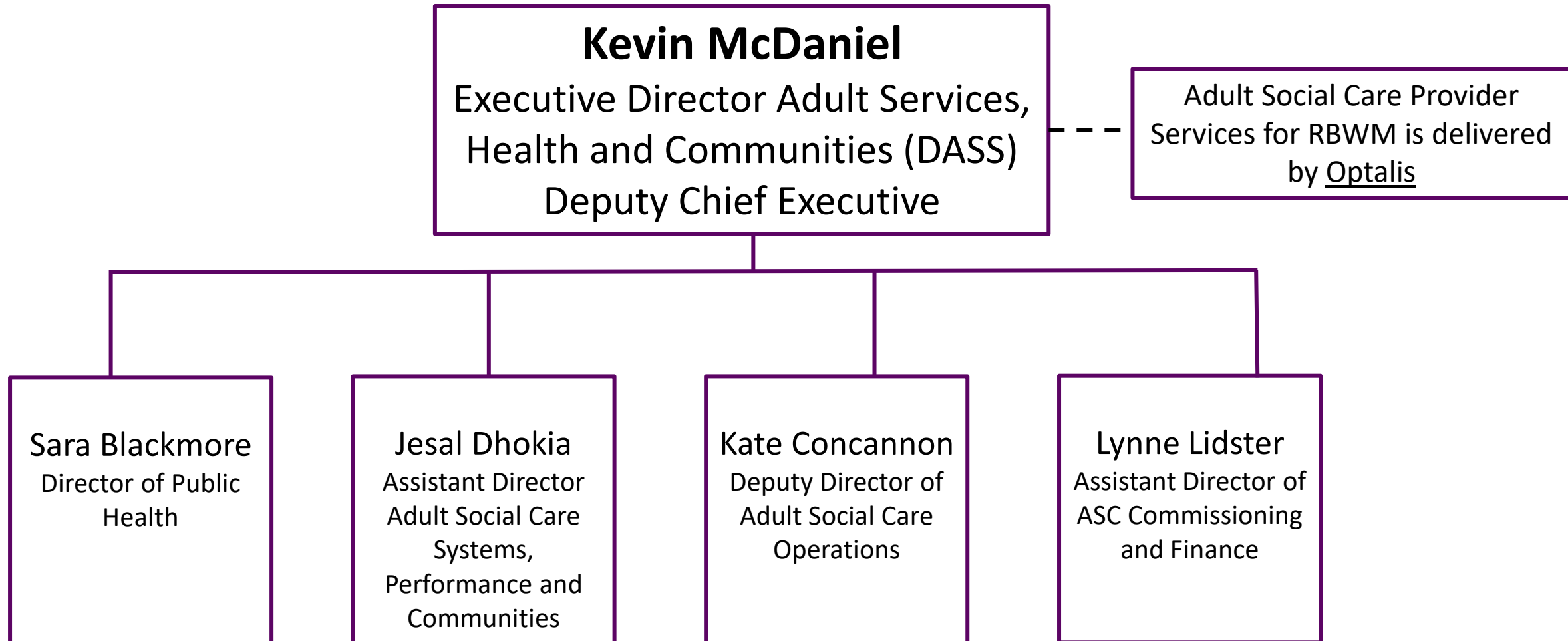
**Marcus Van
Romburgh**
Solutions Architect

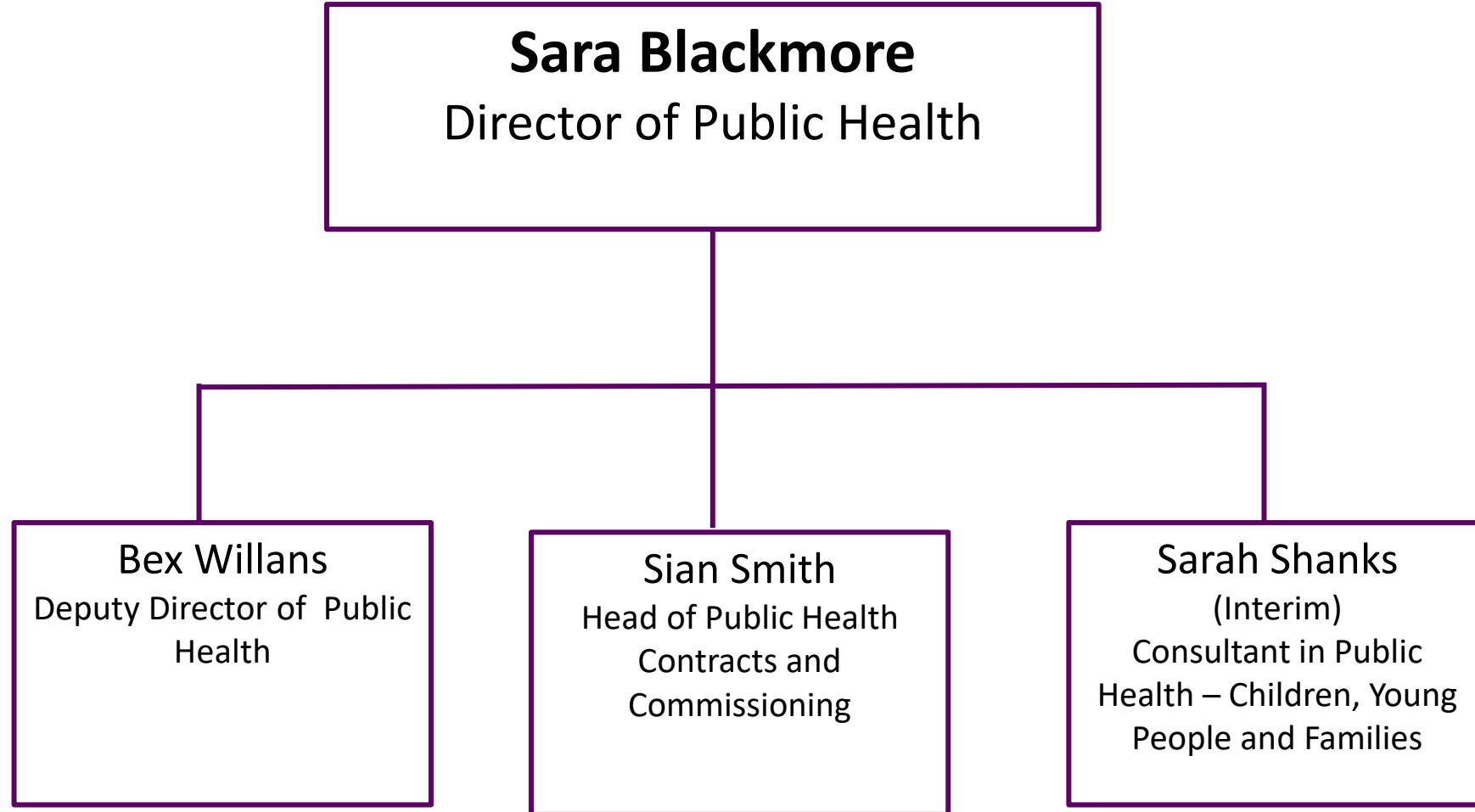
Brian Smith
Service Lead – IT
Operations and
Customer Experience

Simon Arthur
IT Strategic Lead











Jesal Dhokia
Assistant Director Adult Social Care
Systems, Performance and Communities

Sumayyah Zeib
Community
Prevention Manager

Allison Killick
Business Systems
Manager

Miranda
Cruickshank
Data, Performance and
Engagement Manager

Vacant
Digital Innovation
and Transformation
Lead

Diane Lindsay
Executive Assistant /
Office Manager



Kate Concannon
Deputy Director of Adult Social
Care Operations

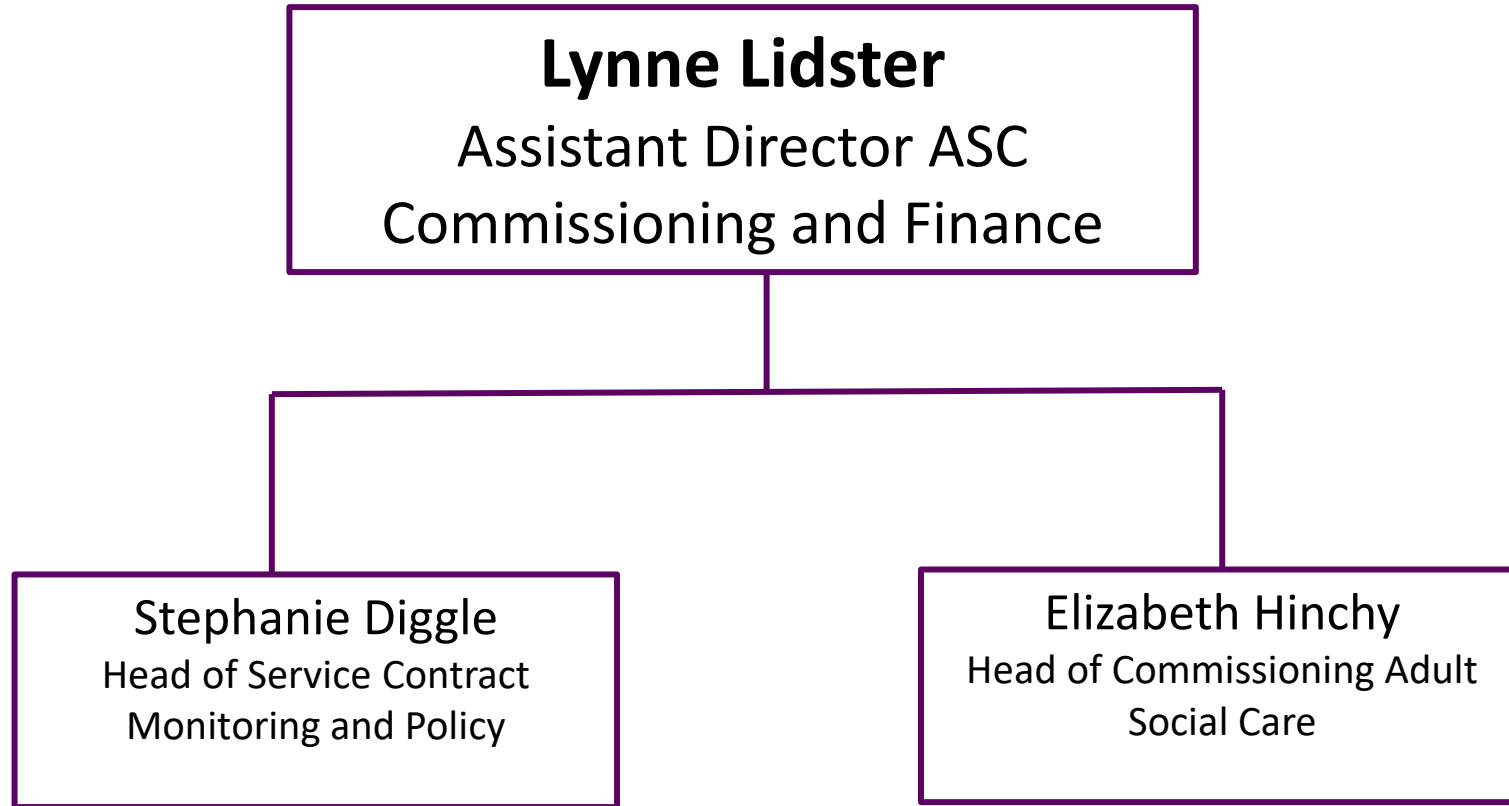
Louise Kerfoot
Head of Integrated
Learning Disability
Services

Suzanne Michael
Service Team Manager
– Mental Wellbeing
Service

Lucy Underdown
Head of Quality and
Safeguarding

Diane Macdonald
Head of Community
Services

Jenny Plummer
Head of Service –
System Flow and Care
Integration





Andrew Durrant
Executive Director of Place
Services

Alysse Strachan
Assistant Director of
Neighbourhood Services

Adrien Waite
Assistant Director of
Planning

Chris Joyce
Assistant Director of
Placemaking, Property
and Sustainability

Amanda Gregory
Assistant Director
Housing and Public
Protection

