

RBWM Function Chart
Place Directorate
November 2025

Royal Borough of Windsor and Maidenhead

Cabinet and Council

Stephen Evans
Chief Executive and Head of Paid Service

Andrew Durrant
Executive Director of Place

Alyse Strachan
**Assistant Director of
 Neighbourhood Services**

51 HC / 50.16 FTE

Contracts and Service
Improvements

Sports and Leisure - client and
contract management

Waste – strategy and
contract management

Highways, parking
enforcement, parking policy
and strategy

Transport - road safety policy,
schools, including escorts,
new roads and streetworks,
school crossing patrols

Management of parks,
cemeteries, countryside, open
spaces, allotments, Public
Rights of Way

Grounds maintenance

Street cleansing

Adrien Waite
Assistant Director of Planning

57 HC / 60.54 FTE

Planning:
Development management,
enforcement,
and policy

Technical support

Building Control

Arboriculture Services

Chris Joyce
**Assistant Director of
 Placemaking, Partnerships and
 Sustainability**

62 HC / 54.84 FTE

Joint Emergency Planning Unit

Lead Local Flooding Authority

Economic growth

Tourism

Town Centre management
Regeneration

Museums, Heritage and Arts

Sustainability and Climate, energy and
Ecology

Natural environment and nature reserves

Infrastructure planning, CIL and S106

Property Services

Facilities and building management

Asset Management – Corporate and
Commercial Assets

Building Services Compliance

Development – Joint Ventures

Development, surplus assets, and
deposals

Civic events and ceremonies
Mayoral Office

Amanda Gregory
**Assistant Director of Housing
 and Public Protection**

71 HC / 78.25 FTE

Housing Options and Homelessness
including Rough Sleeping

Housing Strategy and Inclusion –
UK resettlement, Disabled Facilities
grants and Flexible Home
Improvement Loans Ltd

Trading Standards – Consumer
protection

Licensing - premises, street trading
and taxis

Environmental Health

- Food hygiene/standards, Health
and Safety, infectious disease,
private water supplies, animal
licensing
- Private sector housing, HMO and
caravan licensing.
- Environmental Protection

Community Safety – antisocial
behaviour, Channel and community
wardens

Community Safety Partnership

Control Room and CCTV

**RBWM Function Chart
Adult Services, Health and
Communities Directorate
November 2025**

Royal Borough of Windsor and Maidenhead

Cabinet and Council

**Stephen Evans
Chief Executive and Head of Paid Service**

**Kevin McDaniel
Executive Director of Adult Services, Health and Communities (DASS)
Deputy Chief Executive**

**Sara Blackmore
Director of Public Health**

15 HC / 13.63 FTE

Leadership and delivery
of Joint Health and
Wellbeing Strategy
across the lifecourse and
JNSA

Oversight of public
health grant across
health improvement,
healthcare
public health, and health
protection

Oversight and assurance
of mandated and
discretionary services:
NHS HealthChecks,
Healthy Child
Programme, child
measurement, sexual
health, smoking
cessation, substance
misuse, weight
management and NHS
commissioner advice

**Jesal Dhokia
Assistant Director ASC
Systems, Performance
& Communities**

8 HC / 8 FTE

CQC readiness

Systems:
Mosaic user support,
training, data quality,
workflows, supplier
interface, governance

Performance: statutory
returns (ADASS, CLD,
SAC), performance
analysis, KPI reporting for
Finance and Performance
Board, Power BI reporting
and benchmarking trends

Community: Capacity
building, asset mapping,
co-production, local
coordination, voluntary
sector commissioning,
social prescribing,
integrated NHS/Public
Health prevention,
impact monitoring,
partnerships funding
development.

**Safeguarding,
Information and
Advice**

6 HC / 3.76 FTE

Information, Advice
and Support Services
SEND

MOSAIC project
leadership

All Age Safeguarding
Board

**Kate Concannon
Deputy Director of Adult
Social Care Operations
(Deputy DASS)**

86 HC / 91.34 FTE

Information, advice and
support service

Operational and social care
practice

Care and resource allocation

Assessment and care and
support planning

Workforce recruitment,
retention and development

Operational complaints

Operational safeguarding

Safeguarding Board

Collaboration and
integration across
organisational boundaries,
including health and care

**Lynne Lidster
Assistant Director ASC
Commissioning and
Finance**

17 HC / 15.75 FTE

Care provider quality
assurance and support

Strategic procurement of
residential, nursing and
care at home services

Brokerage of placements
and care packages for
individuals

Market management,
contract negotiation and
provider relations
leadership

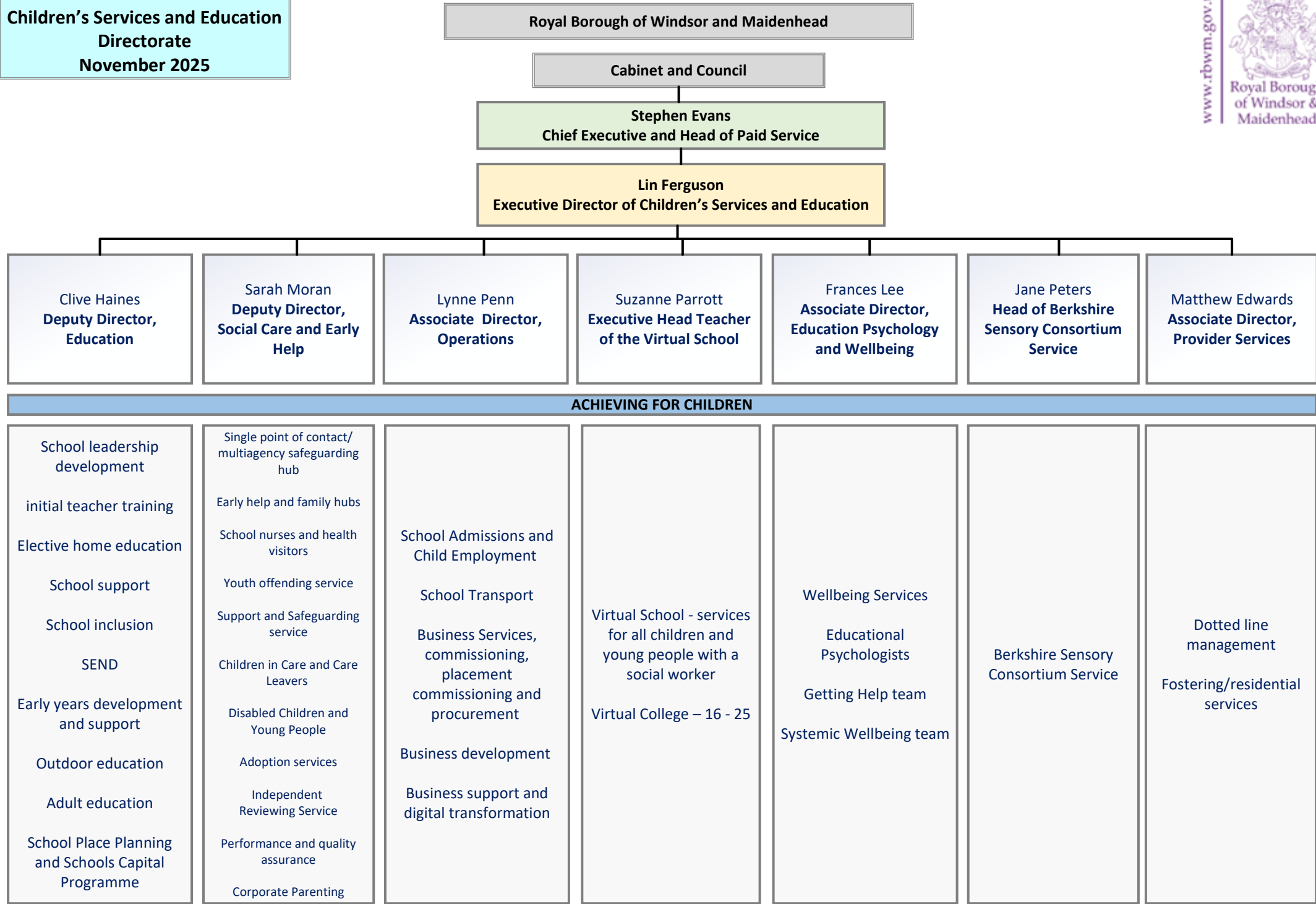
Better Care Fund
oversight and control
with Frimley ICS

**Helen Woodland
Chief Executive of
Optalis**

OPTALIS

Delivery of specific
services for residents
including Supported
Accommodation, Day
Centres, Supported
Employment and
Reablement Services

RBWM Function Chart
Children’s Services and Education
Directorate
November 2025



**RBWM Function Chart
Resources Directorate
November 2025**

