

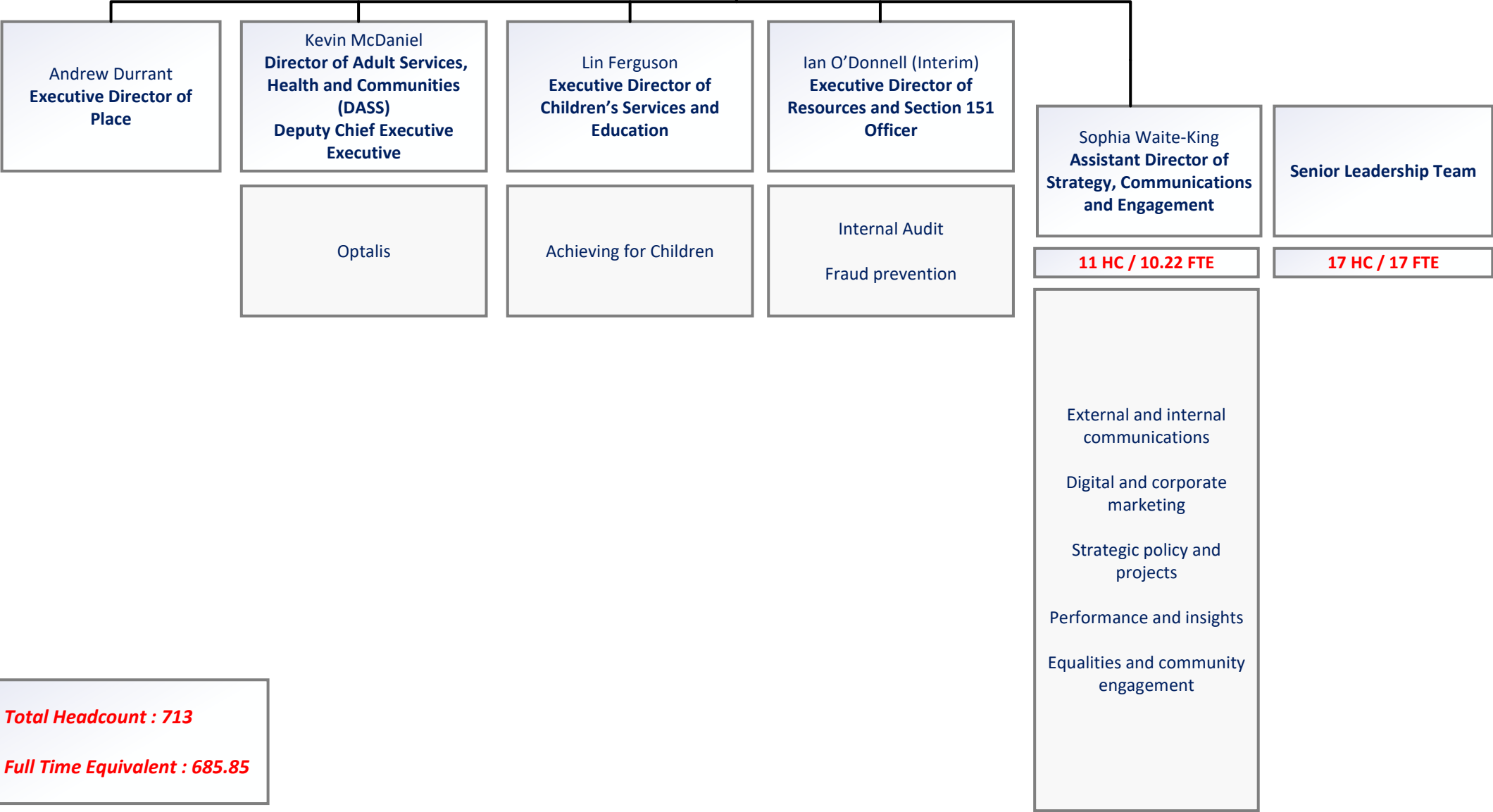
RBWM Function Chart
Chief Executive's Service
August 2025

Royal Borough of Windsor and Maidenhead

Cabinet and Council

Stephen Evans
Chief Executive and Head of Paid Service

Sara Blackmore
Director of Public Health



**RBWM Function Chart
Place Directorate
August 2025**

Royal Borough of Windsor and Maidenhead

Cabinet and Council

Stephen Evans
Chief Executive and Head of Paid Service

Andrew Durrant
Executive Director of Place

Alyse Strachan
**Assistant Director of
Neighbourhood Services**

49 HC / 47.28 FTE

Contracts and Service Improvements

Sports and Leisure - client and contract management

Waste – strategy and contract management

Highways, parking enforcement, parking policy and strategy

Transport - road safety policy, schools, including escorts, new roads and streetworks, school crossing patrols

Management of parks, cemeteries, countryside, open spaces, allotments, Public Rights of Way

Grounds maintenance

Street cleansing

Adrien Waite
Assistant Director of Planning

59 HC / 61.66 FTE

Planning:
Development management, enforcement, and policy

Technical support

Building Control

Arboriculture Services

Chris Joyce
**Assistant Director of
Placemaking, Partnerships and
Sustainability**

58 HC / 53.14 FTE

Joint Emergency Planning Unit

Lead Local Flooding Authority

Economic growth

Tourism

Town Centre management
Regeneration

Museums, Heritage and Arts

Sustainability and Climate, energy and Ecology

Natural environment and nature reserves

Infrastructure planning, CIL and S106

Property Services

Facilities and building management

Asset Management – Corporate and Commercial Assets

Building Services Compliance

Development – Joint Ventures

Development, surplus assets, and deposals

Civic events and ceremonies
Mayoral Office

Amanda Gregory
**Assistant Director of Housing
and Public Protection**

69 HC / 75.06 FTE

Housing Options and Homelessness including Rough Sleeping

Housing Strategy and Inclusion – UK resettlement, Disabled Facilities grants and Flexible Home Improvement Loans Ltd

Trading Standards – Consumer protection

Licensing - premises, street trading and taxis

Environmental Health

- Food hygiene/standards, Health and Safety, infectious disease, private water supplies, animal licensing
- Private sector housing, HMO and caravan licensing.
- Environmental Protection

Community Safety – antisocial behaviour, Channel and community wardens

Community Safety Partnership

Control Room and CCTV

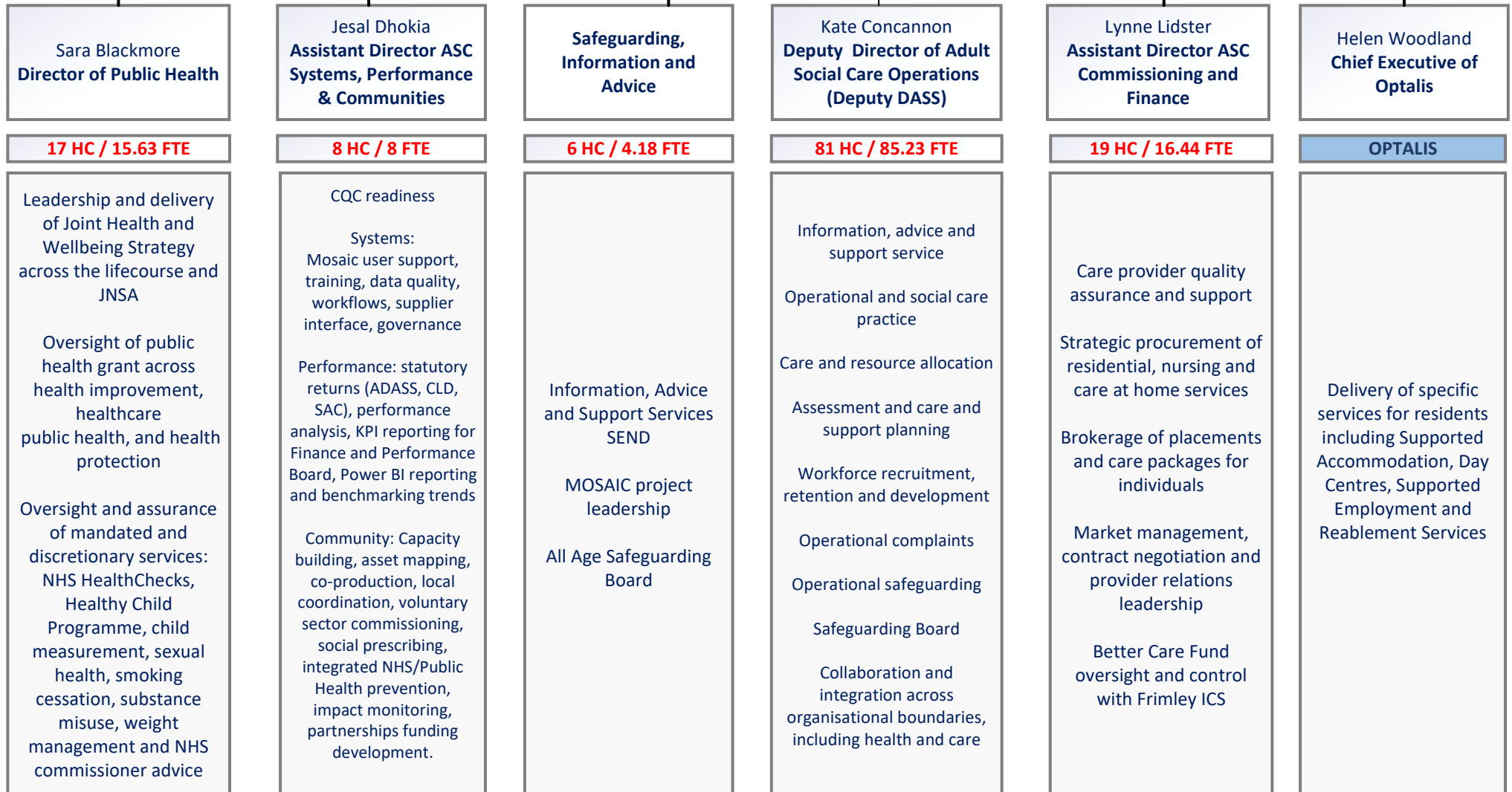
RBWM Function Chart
Adult Services, Health and
Communities Directorate
August 2025

Royal Borough of Windsor and Maidenhead

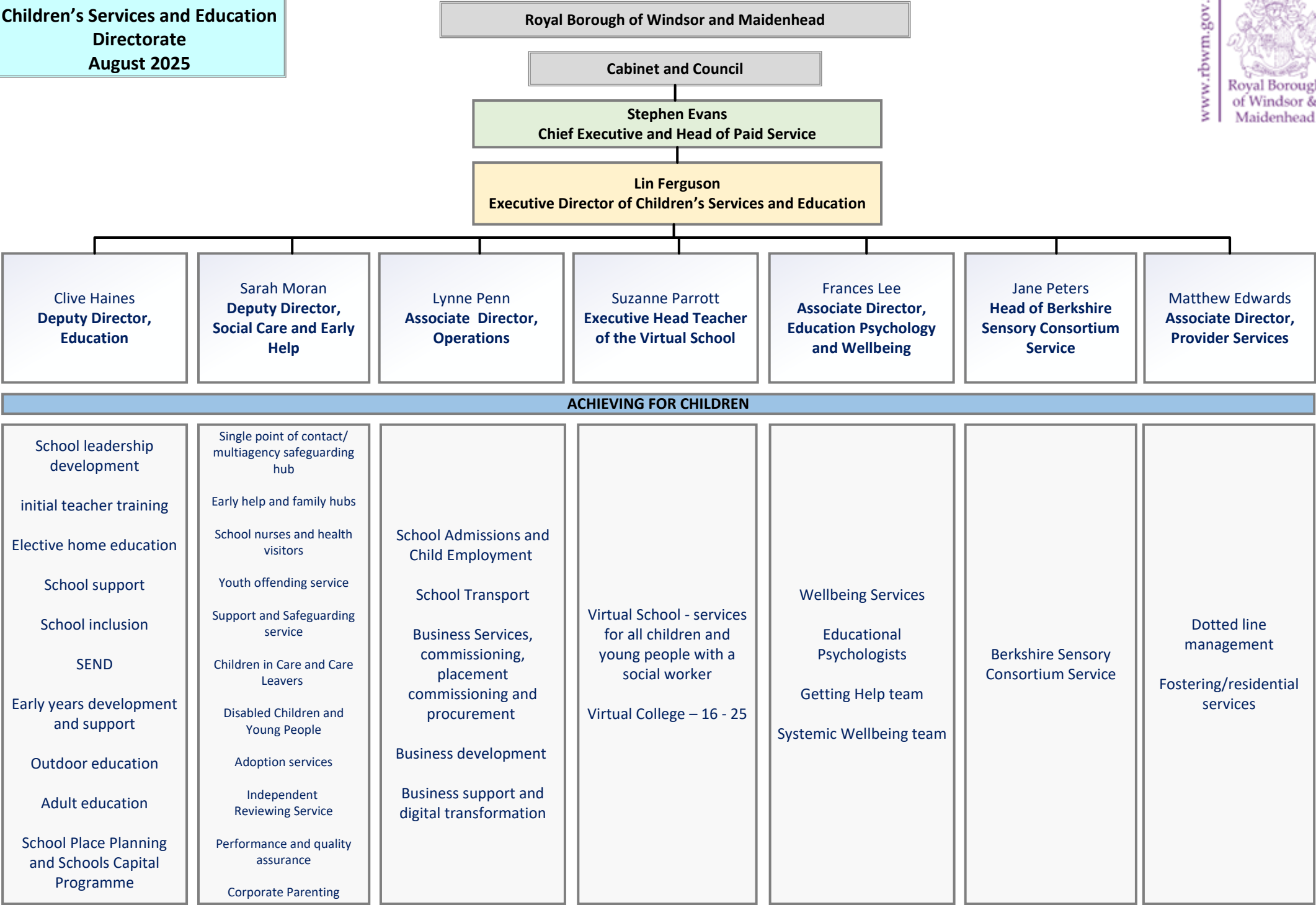
Cabinet and Council

Stephen Evans
 Chief Executive and Head of Paid Service

Kevin McDaniel
 Executive Director of Adult Services, Health and Communities (DASS)
 Deputy Chief Executive



RBWM Function Chart
Children’s Services and Education
Directorate
August 2025



**RBWM Function Chart
Resources Directorate
August 2025**

