

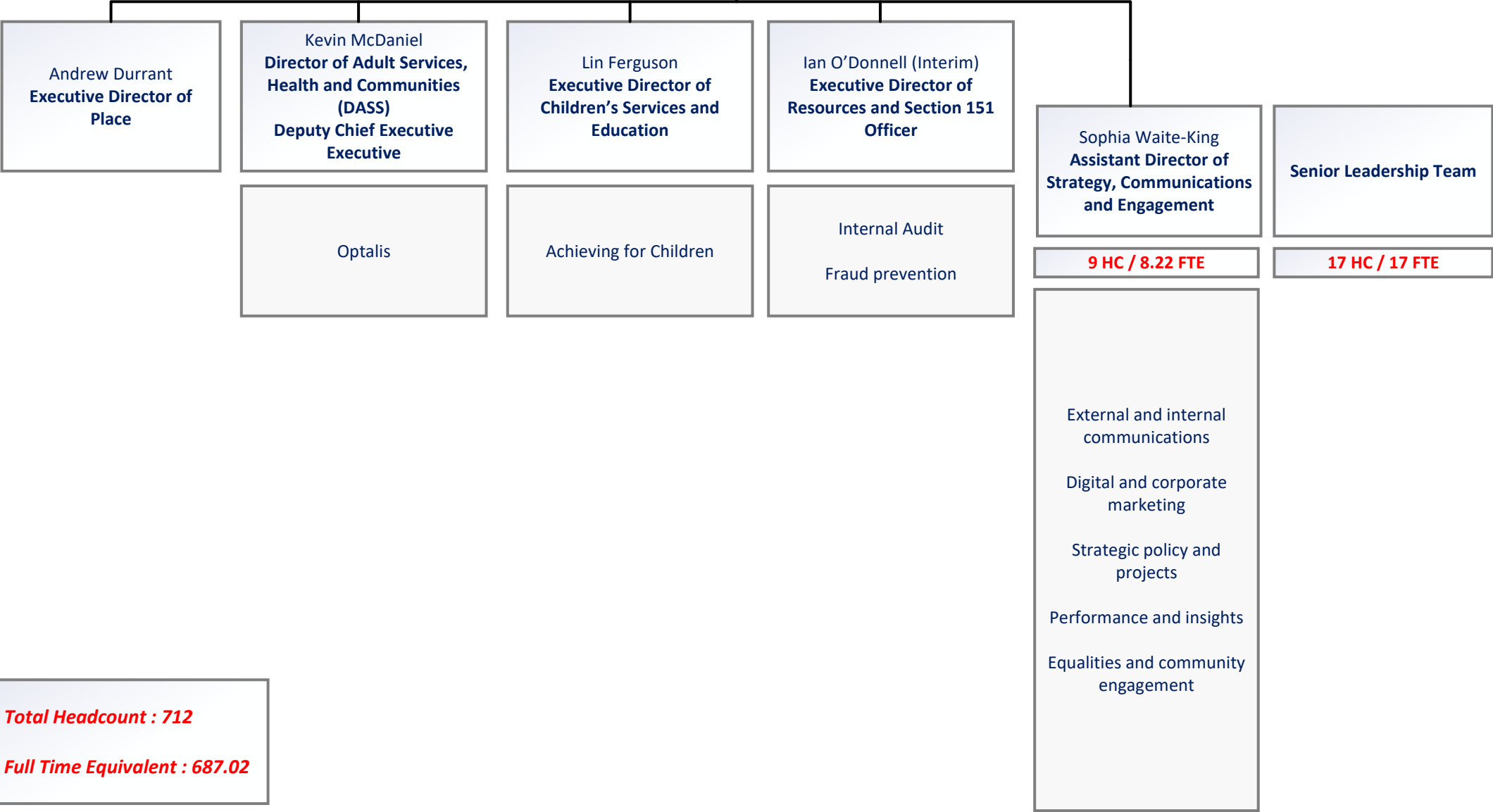
RBWM Function Chart  
Chief Executive's Service  
July 2025

Royal Borough of Windsor and Maidenhead

Cabinet and Council

Stephen Evans  
Chief Executive and Head of Paid Service

Sara Blackmore  
Director of Public Health



**RBWM Function Chart  
Place Directorate  
July 2025**

**Royal Borough of Windsor and Maidenhead**

**Cabinet and Council**

**Stephen Evans  
Chief Executive and Head of Paid Service**

**Andrew Durrant  
Executive Director of Place**

**Alyse Strachan  
Assistant Director of  
Neighbourhood Services**

**49 HC / 47.28 FTE**

Contracts and Service Improvements

Sports and Leisure - client and contract management

Waste – strategy and contract management

Highways, parking enforcement, parking policy and strategy

Transport - road safety policy, schools, including escorts, new roads and streetworks, school crossing patrols

Management of parks, cemeteries, countryside, open spaces, allotments, Public Rights of Way

Grounds maintenance

Street cleansing

**Adrien Waite  
Assistant Director of Planning**

**59 HC / 61.66 FTE**

Planning:  
Development management, enforcement, and policy

Technical support

Building Control

Arboriculture Services

**Chris Joyce  
Assistant Director of  
Placemaking, Partnerships and Sustainability**

**58 HC / 53.14 FTE**

Joint Emergency Planning Unit

Lead Local Flooding Authority

Economic growth

Tourism

Town Centre management  
Regeneration

Museums, Heritage and Arts

Sustainability and Climate, energy and Ecology

Natural environment and nature reserves

Infrastructure planning

Property Services

Facilities and building management

Asset Management – Corporate and Commercial Assets

Building Services Compliance

Development Management – Joint Venture

Development, surplus assets, and deposals

Civic events and ceremonies  
Mayoral Office

**Amanda Gregory  
Assistant Director of Housing  
and Public Protection**

**68 HC / 74.65 FTE**

Housing Options and Homelessness including Rough Sleeping

Housing Strategy and Inclusion – UK resettlement, Disabled Facilities grants and Flexible Home Improvement Loans Ltd

Trading Standards – Consumer protection

Licensing - premises, street trading and taxis

Environmental Health

- Food hygiene/standards, Health and Safety, infectious disease, private water supplies, animal licensing
- Private sector housing, HMO and caravan licensing.
- Environmental Protection

Community Safety – antisocial behaviour, Channel and community wardens

Community Safety Partnership

Control Room and CCTV

**RBWM Function Chart**  
**Adult Services, Health and**  
**Communities Directorate**  
**July 2025**

**Royal Borough of Windsor and Maidenhead**

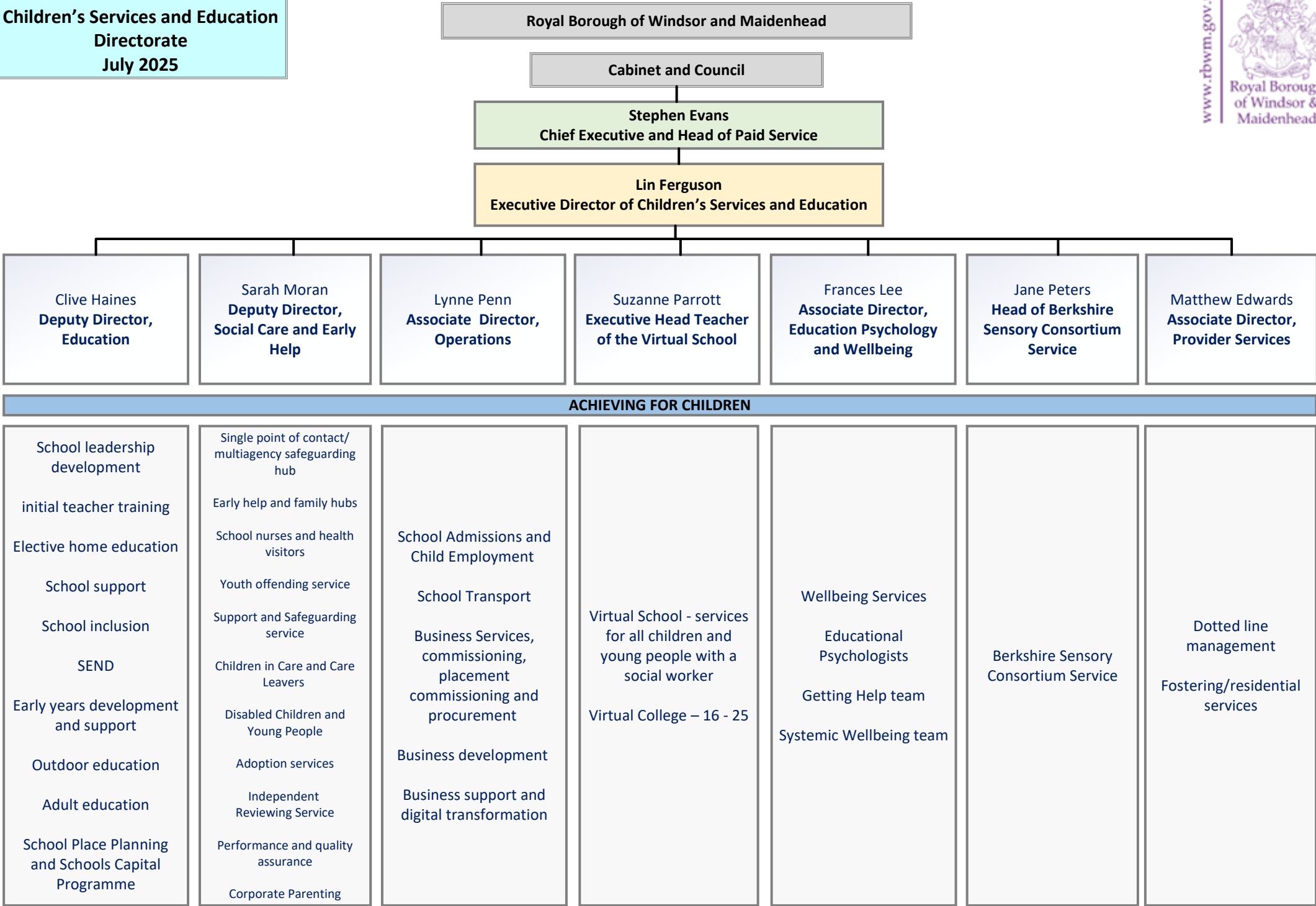
**Cabinet and Council**

**Stephen Evans**  
**Chief Executive and Head of Paid Service**

**Kevin McDaniel**  
**Executive Director of Adult Services, Health and Communities (DASS)**  
**Deputy Chief Executive**



**RBWM Function Chart**  
**Children’s Services and Education**  
**Directorate**  
**July 2025**



**RBWM Function Chart  
Resources Directorate  
July 2025**

