

Designated areas for Secondary, Middle and Upper Schools in Windsor, Datchet and Wraysbury: From September 2024

The designated areas shown on this map are for those applying for school places to start in September 2024, as well as school admissions during the 2024/25 and 2025/26 academic years.

Datchet & Wraysbury secondary schools (Year 7 intake)

I

[Churchmead Church of England School](#)

designated area

Windsor middle schools (Year 5 intake)

A

[Dedworth Middle School](#) *note (a)*

B

[St Edward's Royal Free Ecumenical Middle School](#) *note (a)*

C

[St Peter's Church of England Middle School](#) *note (b)*

D

[Trevelyan Middle School](#) *note (a)*

designated area

Windsor upper schools (Year 9 intake)

1

[Holyport College](#) *note (c)*

2

[The Windsor Boys' School](#) *note (a)*

3

[Windsor Girls' School](#) *note (a)*

designated area

None

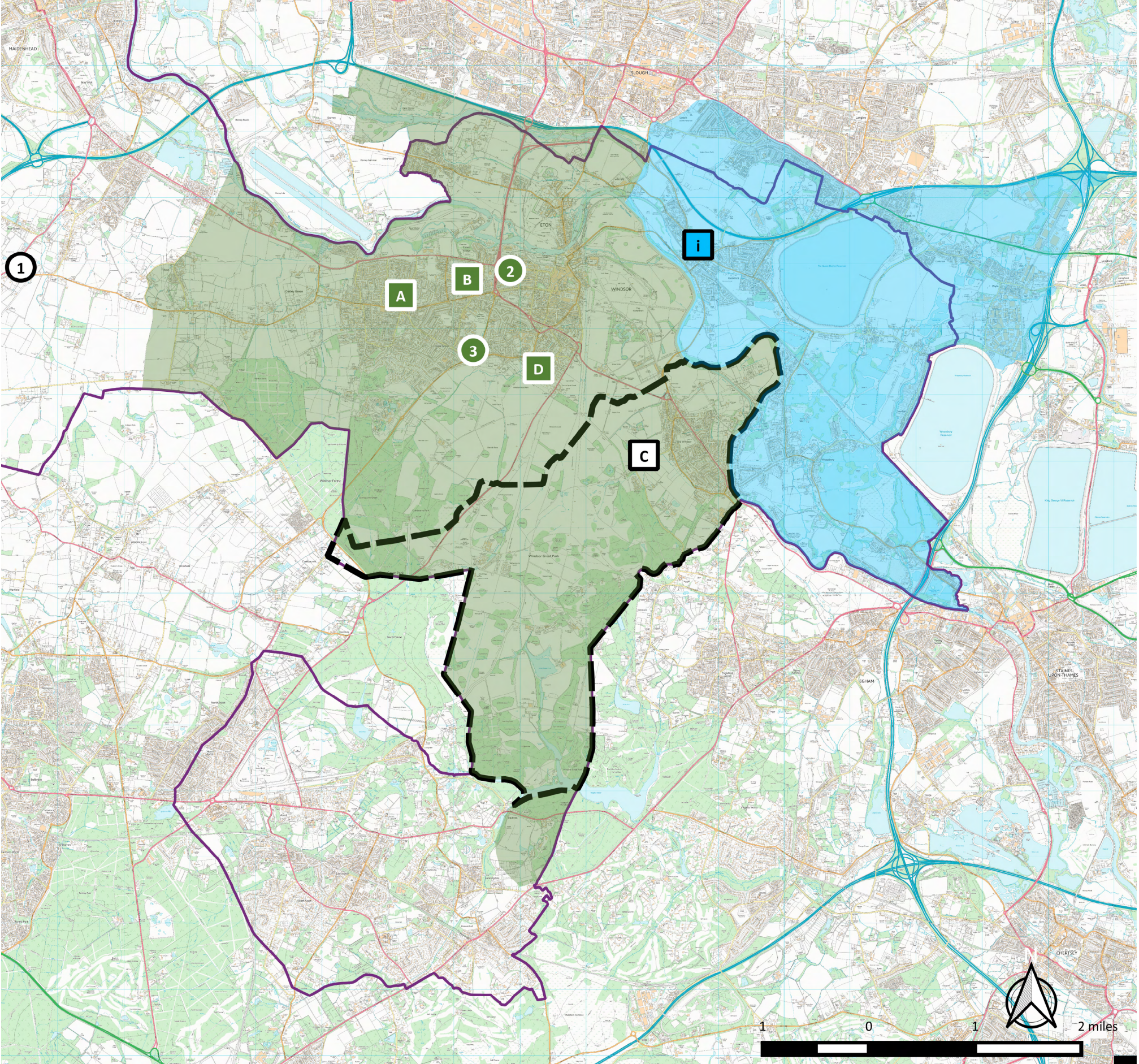
Royal Borough boundary

- Notes**
- a) Three of the four middle schools in Windsor, and both upper schools, share the same designated area, covering all of Eton, Windsor and Old Windsor.
 - b) St Peter's Church of England Middle School uses the ecclesiastical parish of Old Windsor for its designated area.
 - c) Holyport College only offers boarding places at Year 9 from September 2022.

The map

If you are viewing this map electronically, then you can zoom in to see much greater detail.

Check which designated area your address is in on our website at <https://mol.rbwm.gov.uk/mol/view/>



Crown copyright and database right 2021 OS 100018817. This map and the information contained within it remain the property of the Royal Borough of Windsor and Maidenhead. It may not be copied, scanned, reproduced in any format, sold or given to third parties without the permission of Ordnance Survey. (1) This map and the information contained within it are protected by intellectual property rights. (2) Whilst you have certain statutory rights that include to view and read the map, you are granted no automatic additional use rights whatsoever. (3) You the recipient of the information must ensure that the map meets your needs and are entirely responsible for the consequences of using the map. (4) This map IS NOT INTENDED for any use other than for lawful purpose.