



*Royal Borough of Windsor and  
Maidenhead Organisation  
Structure  
October 2023*



**Council and Cabinet**

**Stephen Evans**  
Chief Executive and Head of Paid Services

Tessa Lindfield  
Director of Public  
Health – Berkshire East

Rebecca Hatch  
Assistant Director of  
Strategy

Elizabeth Griffiths  
Executive Director of  
Resources

Lin Ferguson  
Executive Director  
Children’s Services and  
Education (DCS)

Kevin McDaniel  
Executive Director  
Adult Social Care and  
Health (DASS)

Andrew Durrant  
Executive Director of  
Place



Rebecca Hatch  
Assistant Director of Strategy

David Wiles  
Service Lead – Communications

Rachel Kinniburgh  
Service Lead – Strategic Policy,  
Performance and Insights

Ellen McManus-Fry  
Equalities and Community  
Engagement Officer



**Elizabeth Griffiths**  
Executive Director of Resources

**Andrew Vallance**  
Deputy Director of  
Finance and (Deputy  
s151 Officer)

**Louise Freeth**  
Assistant Director of  
Revenue, Benefits, Library  
and Resident Services

**Nikki Craig**  
Assistant Director of HR,  
Corporate Projects and IT

**Elaine Browne**  
Deputy Director of Law  
and Governance and  
Monitoring Officer



## Andrew Vallance

Deputy Director of Finance and  
(Deputy S151 Officer)

Raman Singla  
Chief Accountant

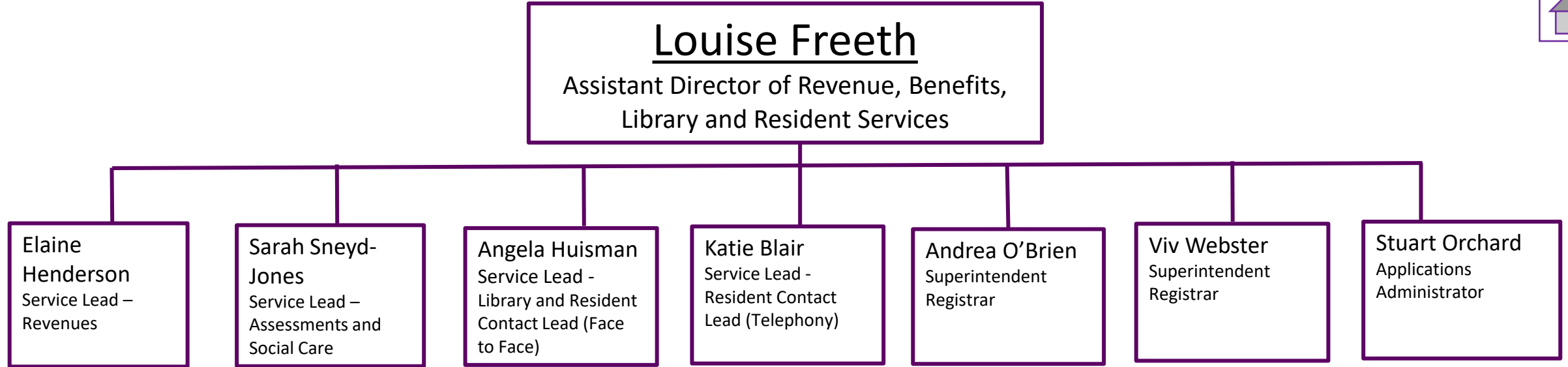
Steve Mappley  
Risk and Insurance  
Manager

Julian McGowan  
Senior Business Partner -  
Finance

Damien Pantling  
Royal County of  
Berkshire Pension Fund

Lyn Hitchinson  
Procurement Manager

Lisa Fryer  
South-west Audit  
Partnership





**Nikki Craig**  
Assistant Director of HR, Corporate  
Projects and IT

**Marcus van  
Romburgh**  
Solutions Architect

**Vanessa  
Faulkner**  
Service Lead – HR  
People Services

**Vacant**  
Service Lead – HR  
Business Partnering

**Brian Smith**  
Service Lead IT  
Operations and  
Customer Experience

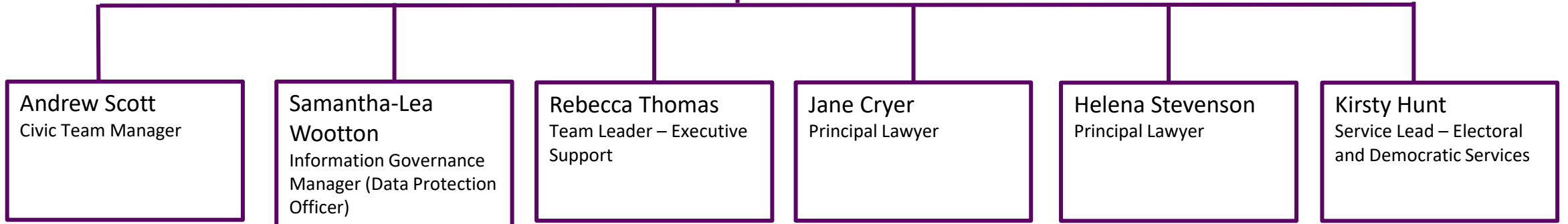
**Simon Arthur**  
IT Strategic Lead

**Dave  
MacFarlane**  
Transformation and  
Digital Service Lead

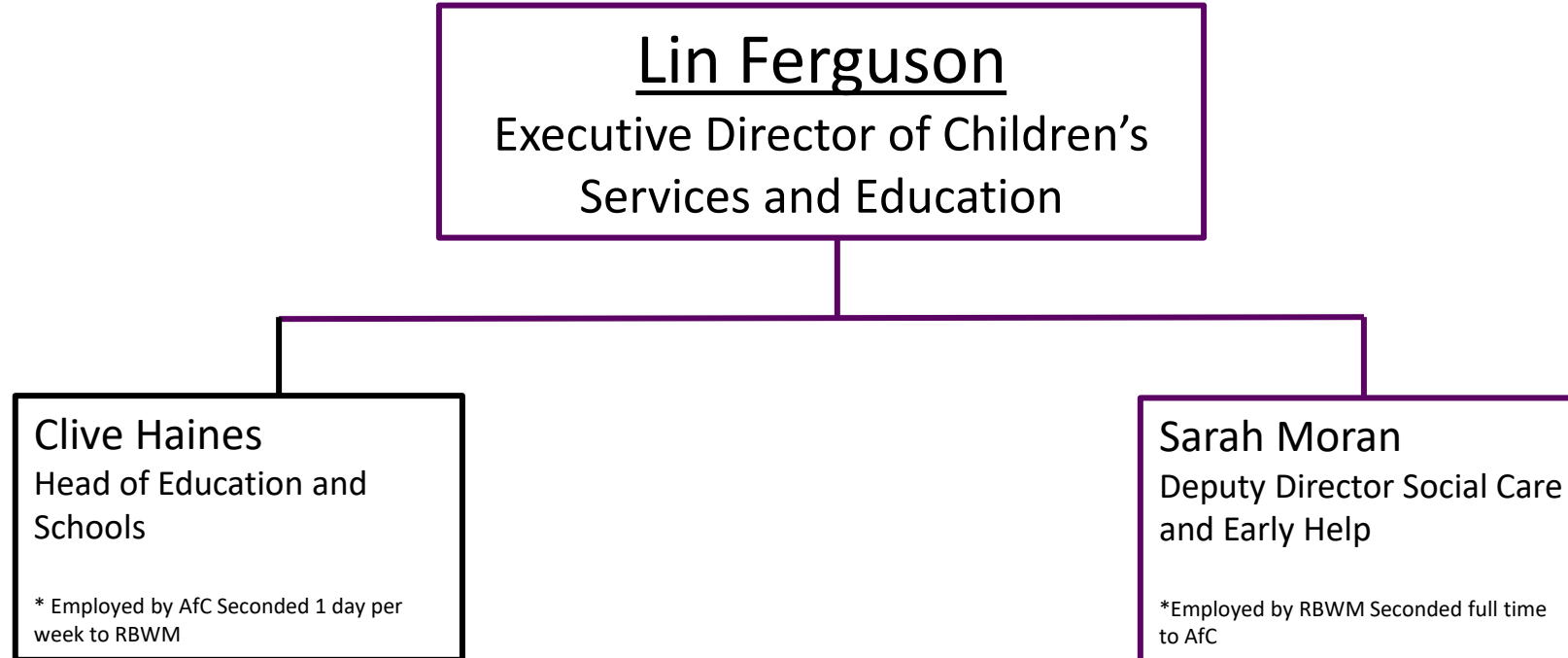


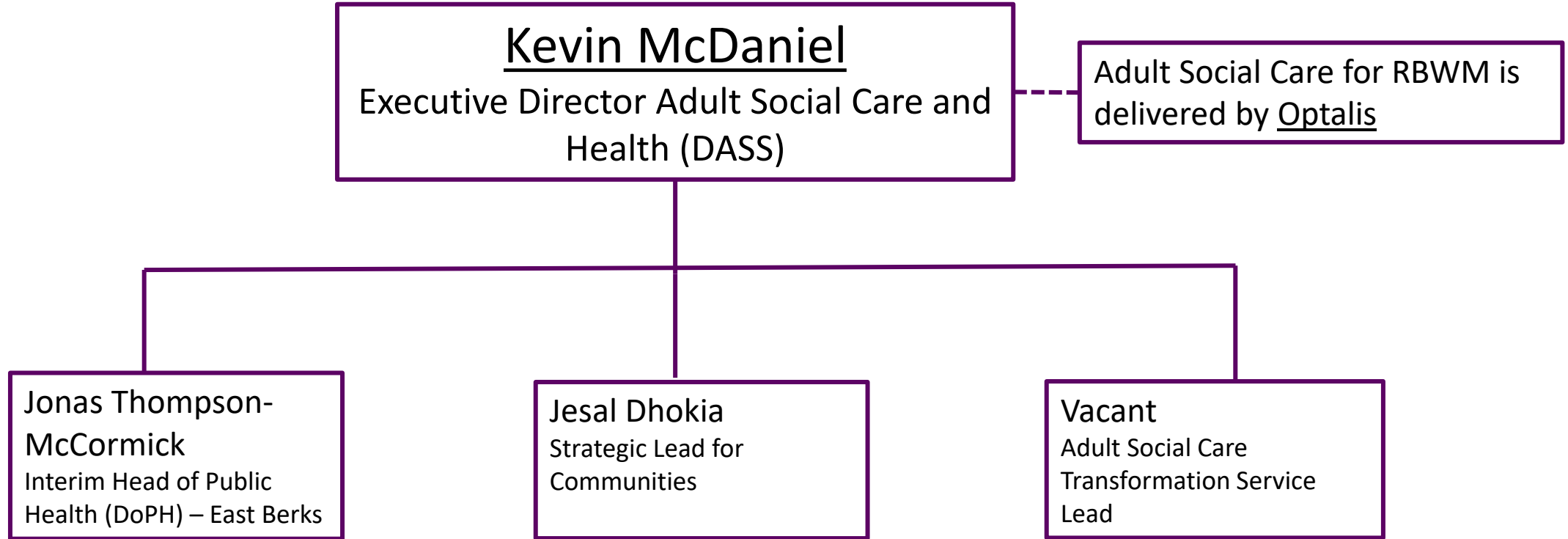
## Elaine Browne

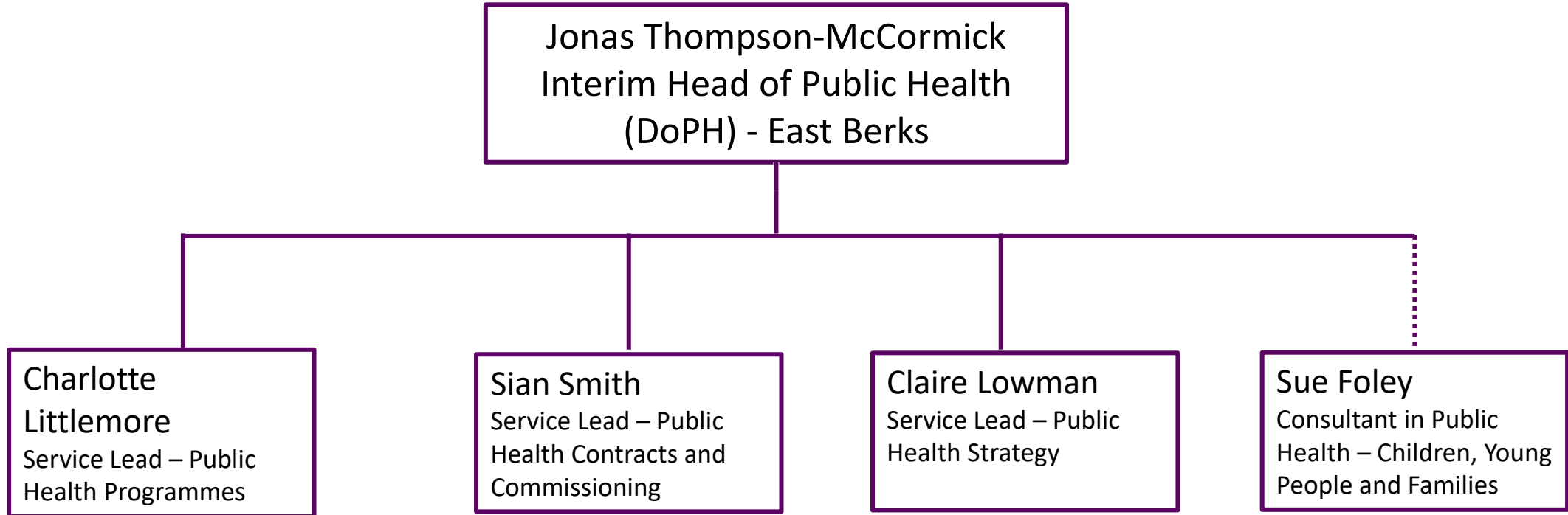
Deputy Director of Law and  
Governance and Monitoring  
Officer

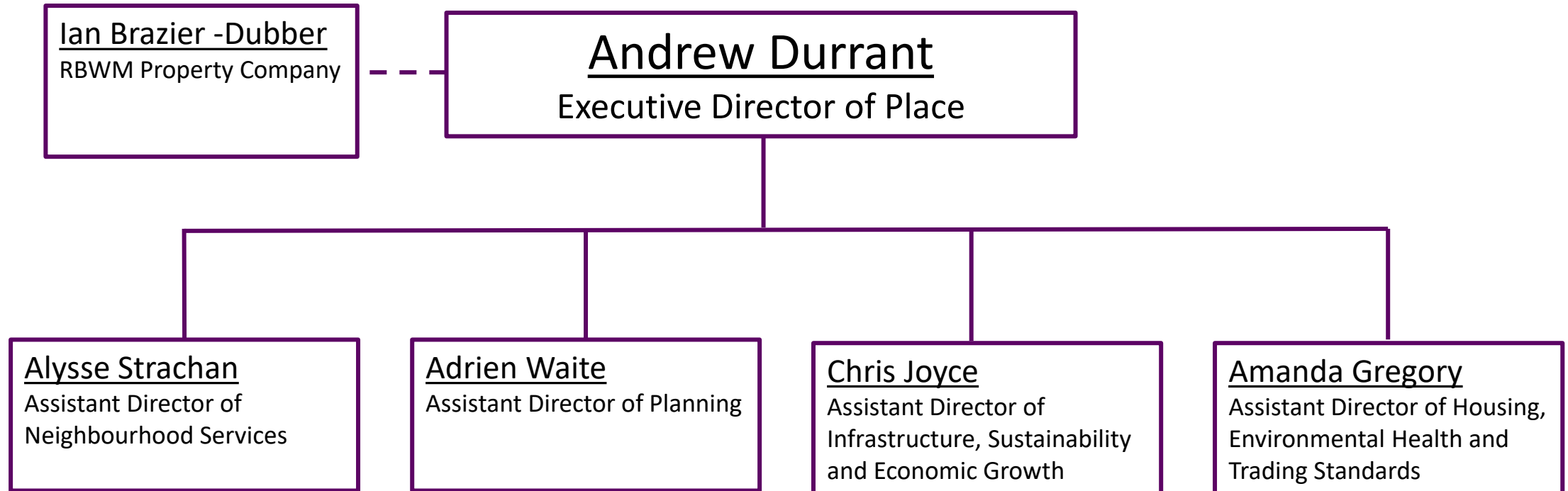


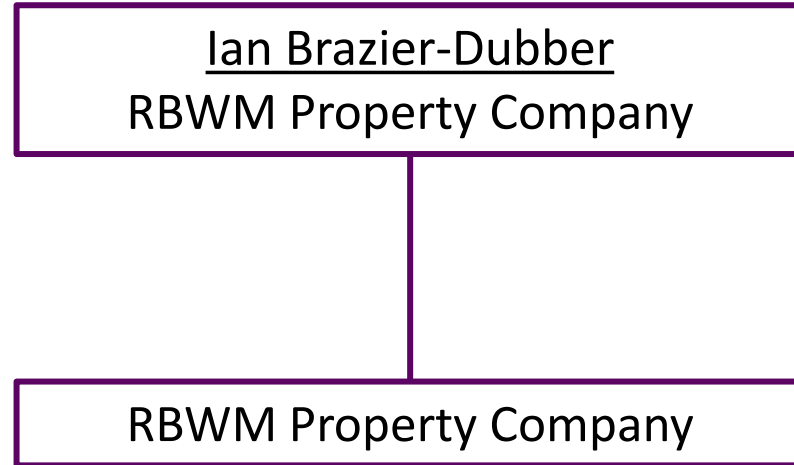


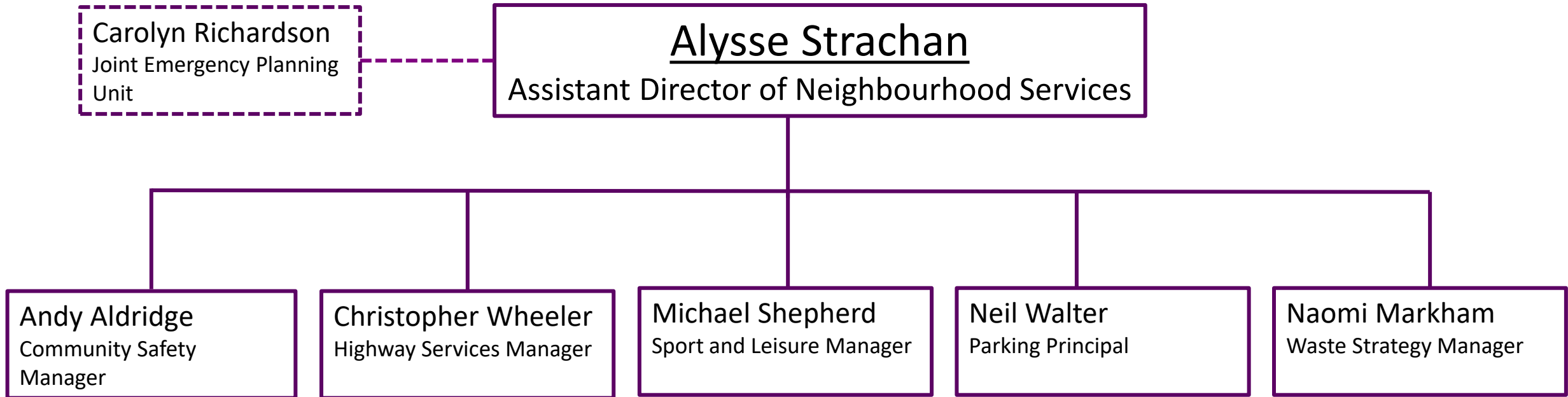














**Adrien Waite**  
Assistant Director of Planning

Sian Saadeh  
Development  
Management Service  
Manager

Ian Motuel  
Planning Policy Manager

Sharon Pope  
Support Services Manager

Helen Leonard  
Arboricultural Co-Ordinator

Jacqueline Barr  
Building Control Service  
Manager

