

Population information for children of school age (and under) in Windsor (2020)



Introduction

This sheet provides information about the numbers of children born in Maidenhead and the number of children resident in Maidenhead. The data forms the basis of projections of future demand for school places. Two datasets are used:

Births data

This is the number of children born, by academic year, in the area. This is based on births registered with local authority Registry Offices and collected nationally by the Office of National Statistics. Each summer, the Royal Borough is provided with the number (and gender) of children born in each postcode in the borough, in the academic year that finished the previous August. The advantage of this data is that it is very accurate. The disadvantage is that it can become rapidly out-of-date as families move in and out of the borough. The number of five year olds in a particular area will almost certainly not be the same as the number of children born in that area five years previously.

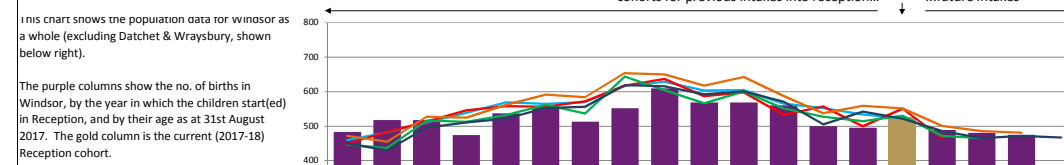
General Practitioners (GP) patient registrations

This is a count of the number of children resident in each postcode in the borough, by gender and age, as at 31st August each year. The dataset covers children aged 0 to 18, and is provided for the Royal Borough via our Public Health Team, from the NHS Child Health Information Systems (CHIS). The advantage of this data is that it is up-to-date, reflecting recent movement of families in and out of the borough. The disadvantage is that it relies on families and GPs to update their patient records accurately and quickly. Not all families will, for example, necessarily inform their GP when moving.

This population information is provided by geographical area (see far right for explanation), in the charts and tables in this sheet.

Although these numbers give a good indication of future demand, the impact of housing currently being built or planned is not shown.

1. Demographic Data for Windsor



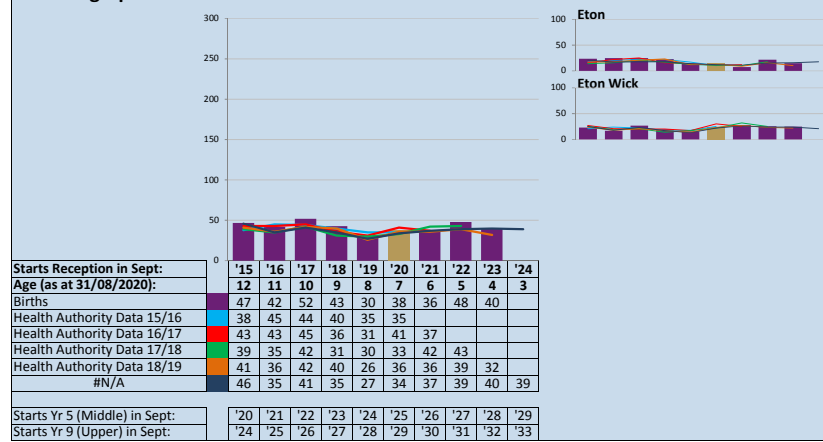
The purple columns show the no. of births in Windsor, by the year in which the children start(ed) in Reception, and by their age as at 31st August 2017. The gold column is the current (2017-18) Reception cohort.

The coloured lines represent the most recent GP patients datasets, shown by the year of start in

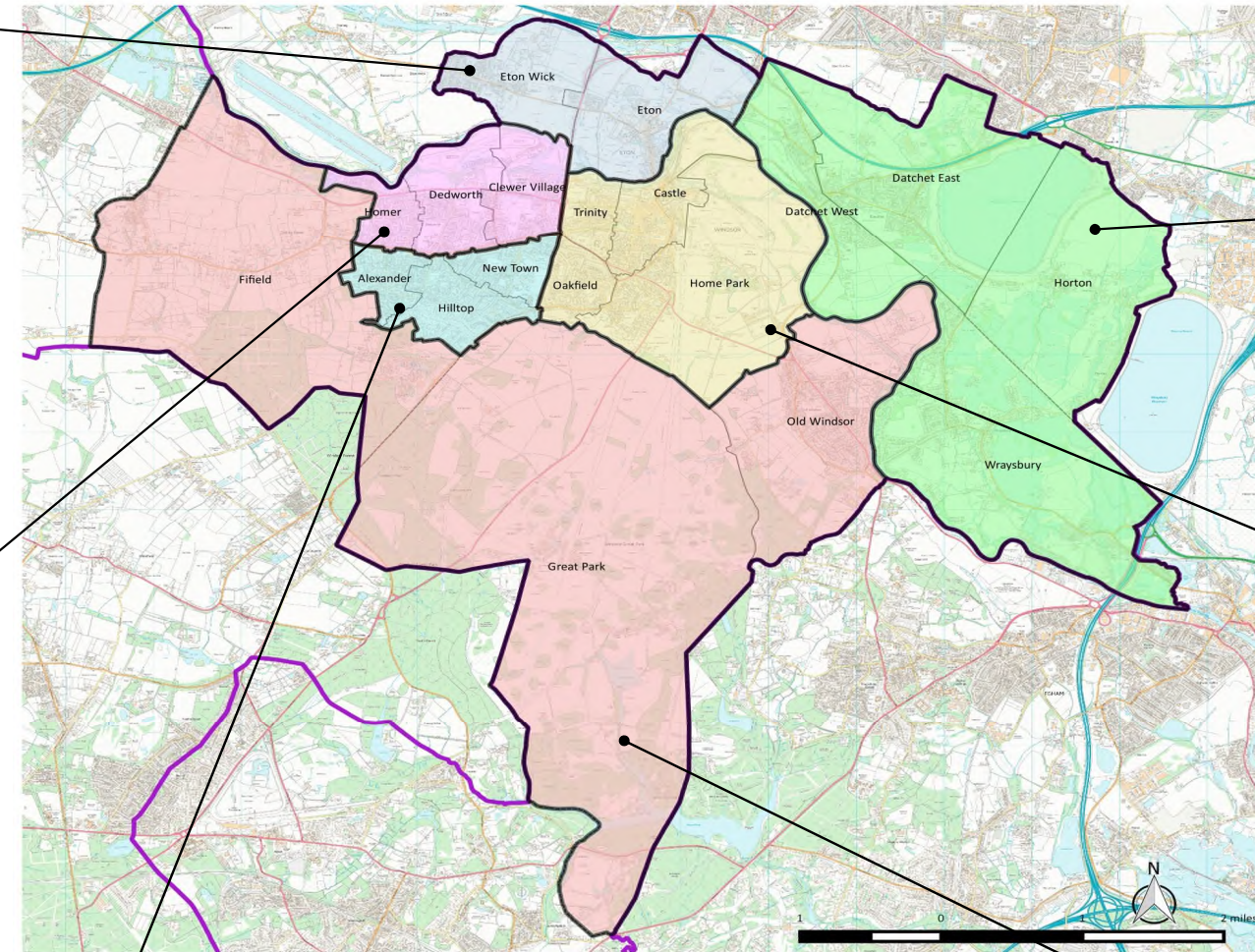
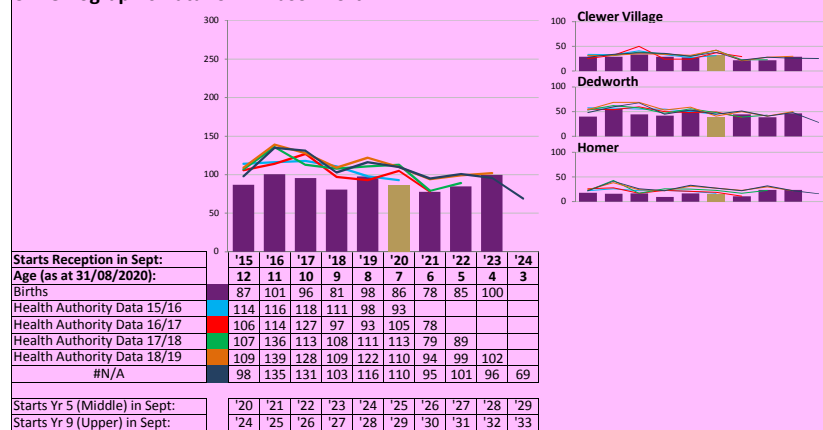
Starts Reception in September	2006	2007	2008	2009	2010	2011	2012	2013	2014	2015	2016	2017	2018	2019	2020	2021	2022	2023	2024
Age (as at 31/08/2020):	18	17	16	15	14	13	12	11	10	9	8	7	6	5	4	3	2	1	0
Births	483	517	517	474	537	555	513	552	609	568	568	560	500	495	526	489	480	475	
Health Authority Data 2015/16	460	482	511	539	569	565	570	617	629	604	605	566	553	534	523				
Health Authority Data 2016/17	450	483	514	546	558	556	572	618	637	587	598	533	557	500	551	465			
Health Authority Data 2017/18	447	437	516	513	532	562	537	644	605	567	601	552	528	515	530	472	465		
Health Authority Data 2018/19	472	455	528	525	562	592	584	654	650	618	643	588	538	559	552	501	486	481	
Health Authority Data 2019/20	450	430	496	511	522	553	556	619	616	593	601	571	505	542	522	486	465	472	467

Starts Year 5 (Middle) in Sept:	2011	2012	2013	2014	2015	2016	2017	2018	2019	2020	2021	2022	2023	2024	2025	2026	2027	2028	2029
Starts Year 7 (Secondary) in Sept	2015	2016	2017	2018	2019	2020	2021	2022	2023	2024	2025	2026	2027	2028	2029	2030	2031	2032	2033

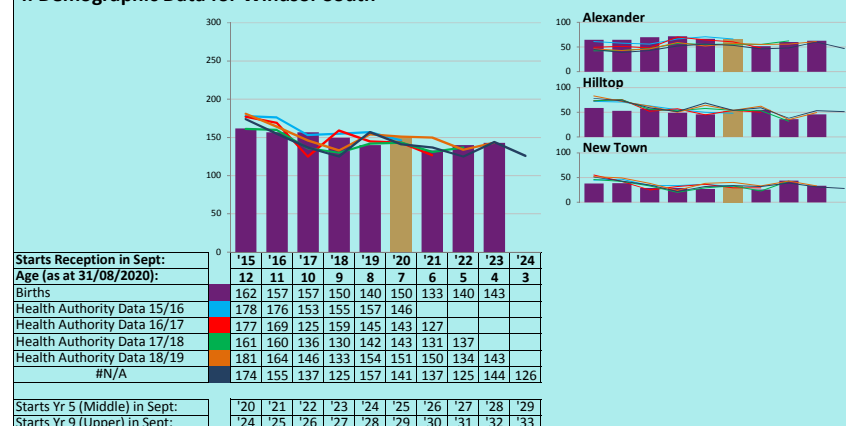
2. Demographic Data for Eton



3. Demographic Data for Windsor North

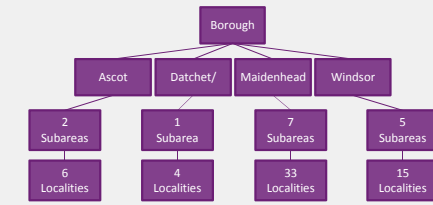


4. Demographic Data for Windsor South



Geographical areas

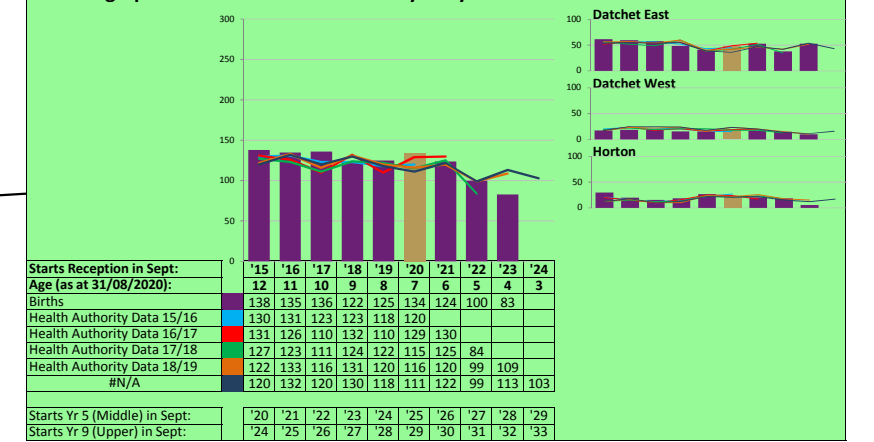
To analyse how the child population is changing, we have divided the borough up into areas, subareas and localities:



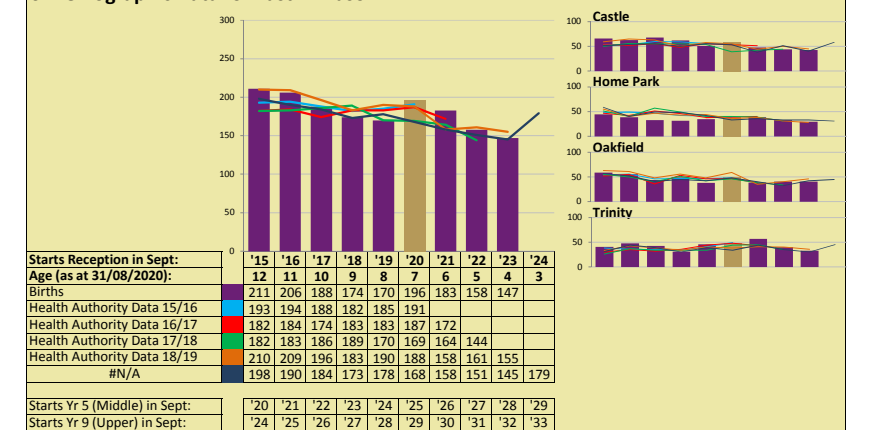
This allows the borough to examine population data at a town level, and more locally, e.g. within a particular school's designated area, for example.

This sheet presents the population data for the geographical levels within the Windsor area.

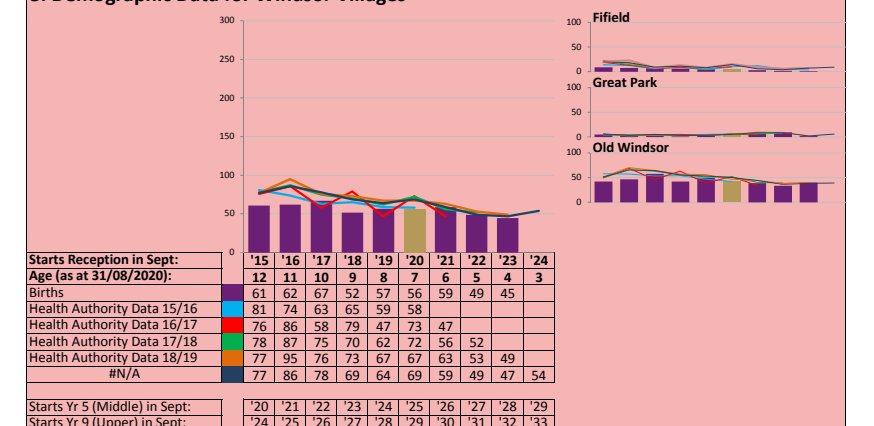
7. Demographic Data for Datchet and Wraysbury



6. Demographic Data for East Windsor



5. Demographic Data for Windsor Villages



(c) Crown copyright and database right 2020. OS 100018818
1. This map and the information contained within it are protected by intellectual property rights.
2. Whilst you have certain statutory rights that include to view and read the map, you are granted no automatic additional use rights whatsoever.
3. You the recipient of the information must ensure that the map meets your needs and are entirely responsible for the consequences of using the map.