

Population information for children of school age (and under) in Maidenhead (2020)

Introduction
 This sheet provides information about the numbers of children born in Maidenhead and the number of children resident in Maidenhead. The data forms the basis of projections of future demand for school places. Two datasets are used:

Births data
 This is the number of children born, by academic year, in the area. This is based on births registered with local authority Registry Offices and collected nationally by the Office of National Statistics. Each summer, the Royal Borough is provided with the number (and gender) of children born in each postcode in the borough, in the academic year that finished the previous August. The advantage of this data is that it is very accurate. The disadvantage is that it can become rapidly out-of-date as families move in and out of the borough. The number of five year olds in a particular area will almost certainly not be the same as the number of children born in that area five years previously.

General Practitioners (GP) patient registrations
 This is a count of the number of children resident in each postcode in the borough, by gender and age, as at 31st August each year. The dataset covers children aged 0 to 18, and is provided for the Royal Borough via our Public Health Team, from the NHS Child Health Information Systems (CHIS). The advantage of this data is that it is up-to-date, reflecting recent movement of families in and out of the borough. The disadvantage is that it relies on families and GPs to update their patient records accurately and quickly. Not all families will, for example, necessarily inform their GP when moving.

This population information is provided by geographical area (see far right for explanation), in the charts and tables in this sheet.

Although these numbers give some indication of future demand, the impact of housing currently being built or planned is not shown.

1. Demographic Data for Maidenhead

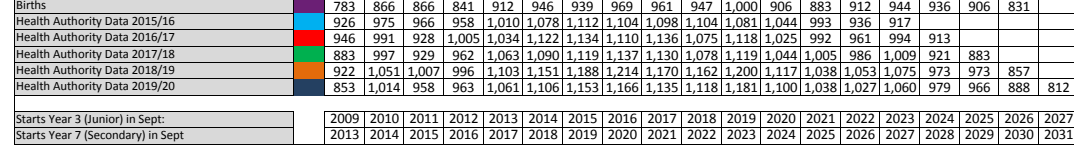
This chart shows the population data for Maidenhead as a whole.

The purple columns show the no. of births in Maidenhead, by the year in which the children start(ed) in Reception, and by their age as at 31st August 2017. The gold column is the current (2017-18) Reception cohort.

The coloured lines represent the most recent GP patients datasets, shown by the year of start in Reception and by age.

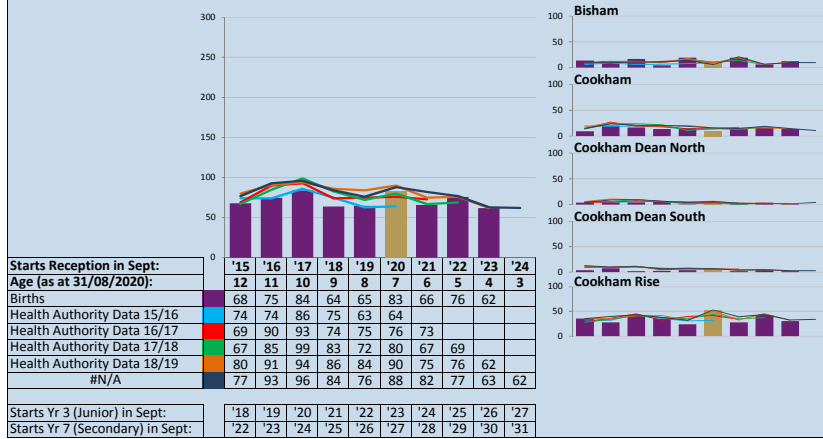
Starts Reception in September:

Age (as at 31/08/2020):

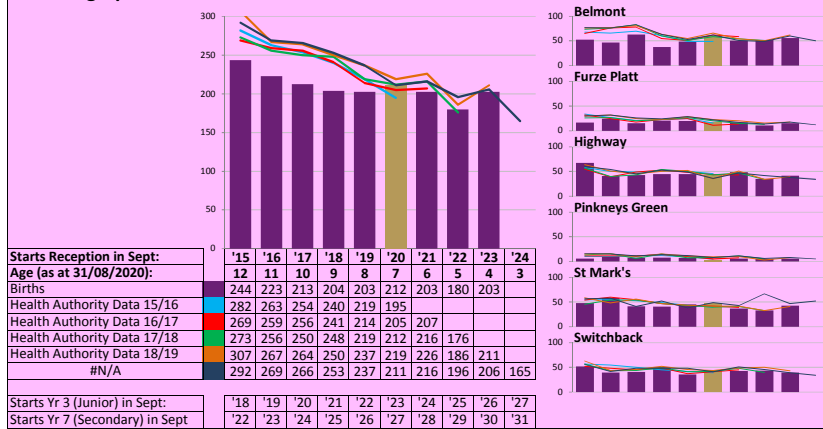


Starts Year 3 (Junior) in Sept:
 Starts Year 7 (Secondary) in Sept

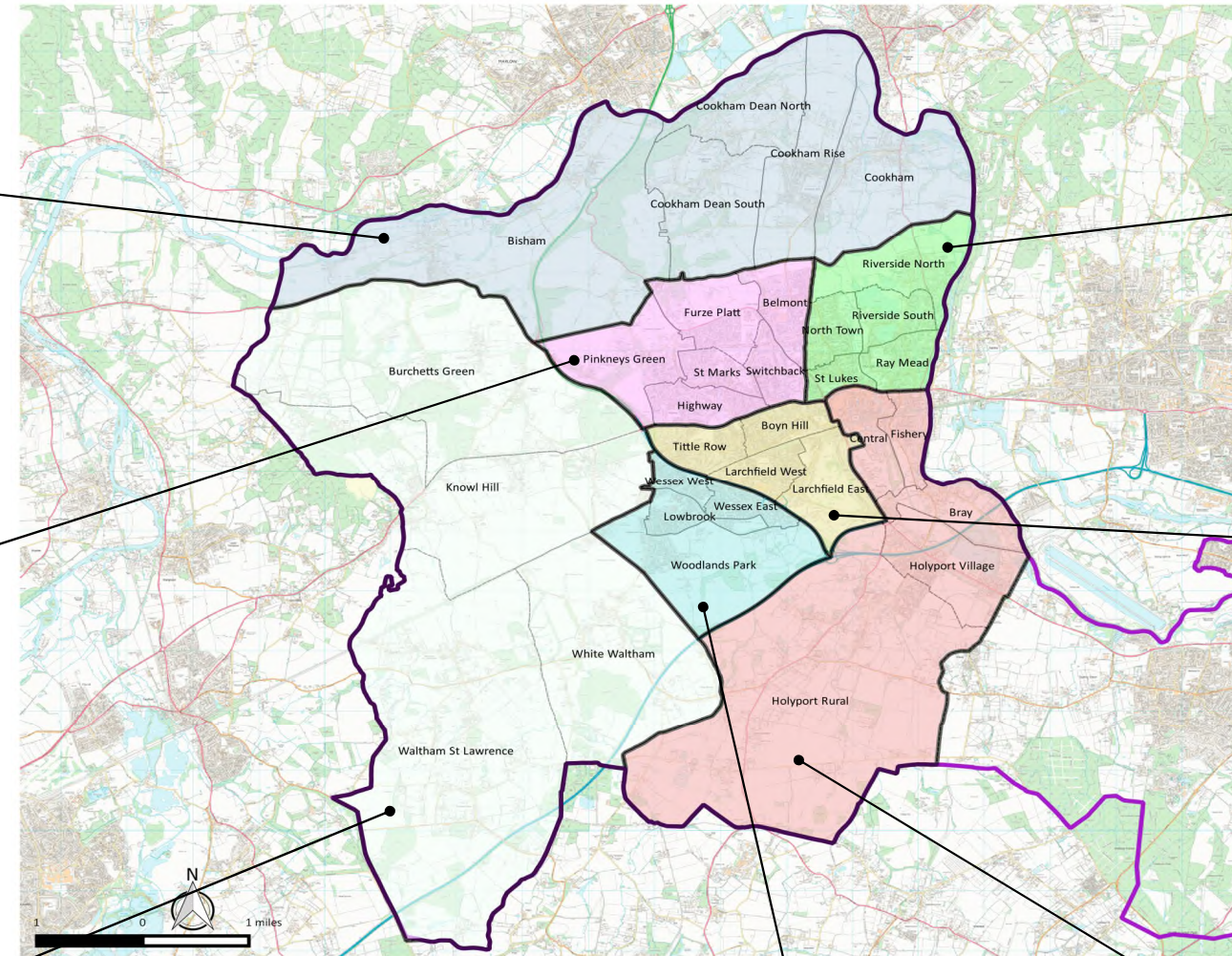
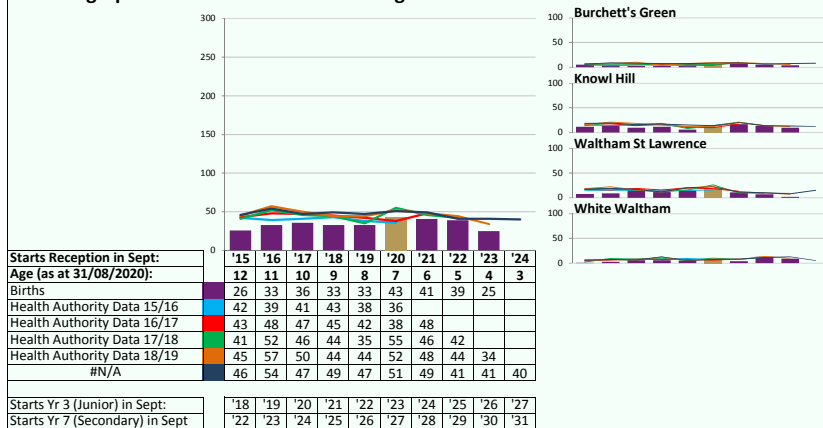
2. Demographic Data for Bisham and Cookham



3. Demographic Data for North West Maidenhead

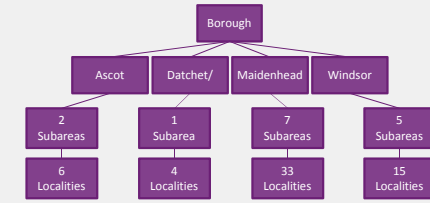


4. Demographic Data for Maidenhead Villages



Geographical areas

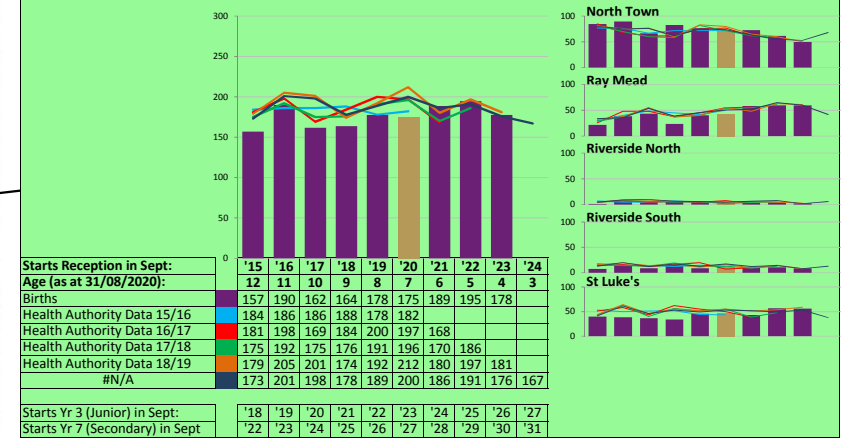
To analyse how the child population is changing, we have divided the borough up into areas, subareas and localities:



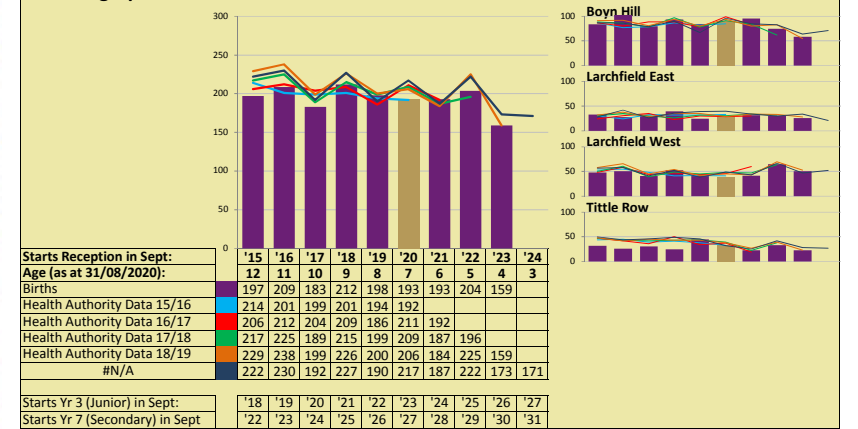
This allows the borough to examine population data at a town level, and more locally, e.g. within a particular school's designated area, for example.

This sheet presents the population data for the geographical levels within the Maidenhead area.

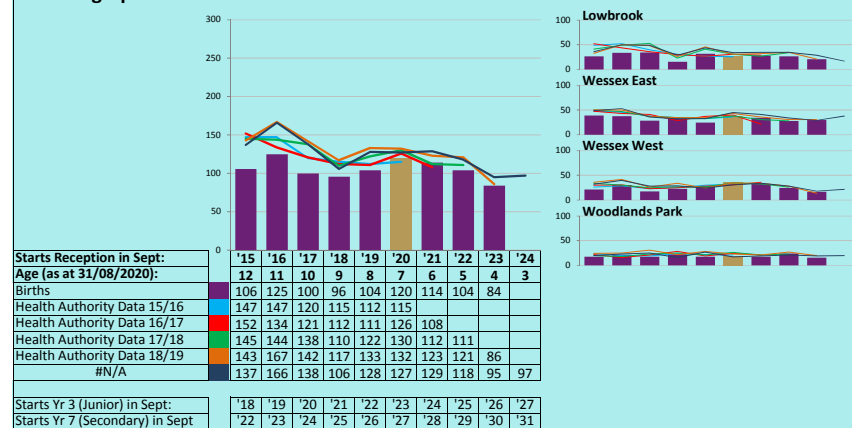
8. Demographic Data for North East Maidenhead



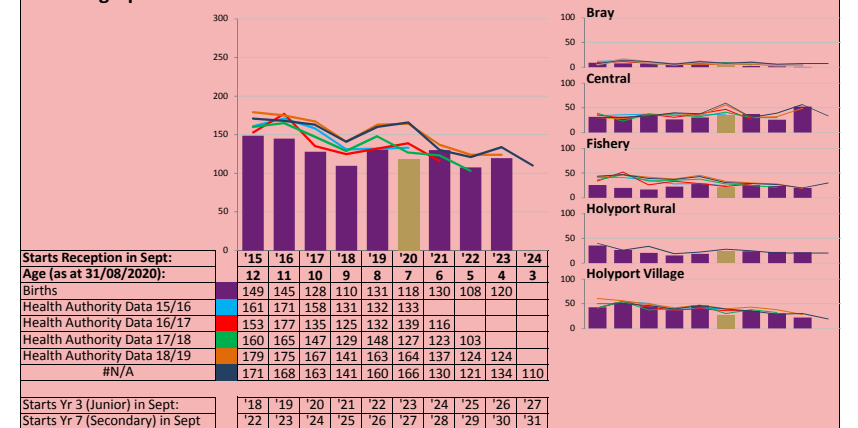
7. Demographic Data for Central Maidenhead



5. Demographic Data for South West Maidenhead



6. Demographic Data for South East Maidenhead



(c) Crown copyright and database right 2020. OS 100018818
 1. This map and the information contained within it are protected by intellectual property rights.
 2. Whilst you have certain statutory rights that include to view and read the map, you are granted no automatic additional use rights whatsoever.
 3. You the recipient of the information must ensure that the map meets your needs and are entirely responsible for the consequences of using the map.