

Population information for children of school age (and under) in Ascot (2020)



Introduction

This sheet provides information about the numbers of children born in Ascot and the number of children resident in Ascot. The data forms the basis of projections of future demand for school places. Two datasets are used:

Births data

This is the number of children born, by academic year, in the area. This is based on births registered with local authority Registry Offices and collected nationally by the Office of National Statistics. Each summer, the Royal Borough is provided with the number (and gender) of children born in each postcode in the borough, in the academic year that finished the previous August. The advantage of this data is that it is very accurate. The disadvantage is that it can become rapidly out-of-date as families move in and out of the borough. The number of five year olds in a particular area will almost certainly not be the same as the number of children born in that area five years previously.

General Practitioners (GP) patient registrations

This is a count of the number of children resident in each postcode in the borough, by gender and age, as at 31st August each year. The dataset covers children aged 0 to 18, and is provided for the Royal Borough via our Public Health Team, from the NHS Child Health Information Systems (CHIS). The advantage of this data is that it is up-to-date, reflecting recent movement of families in and out of the borough. The disadvantage is that it relies on families and GPs to update their patient records accurately and quickly. Not all families will, for example, necessarily inform their GP when moving.

This population information is provided by geographical area (see far right for explanation), in the charts and tables in this sheet.

Although these numbers give a good indication of future demand, the impact of housing currently being built or planned is not shown.

1. Demographic Data for Ascot

This chart shows the population data for Ascot as a whole.

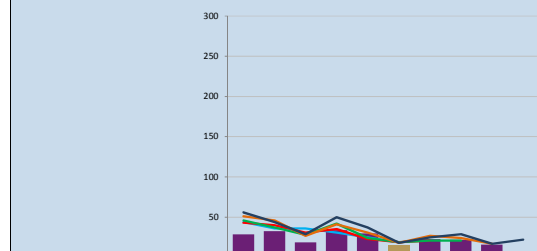
The purple columns show the no. of births in Windsor, by the year in which the children start(ed) in Reception, and by their age as at 31st August 2017. The gold column is the current (2017-18) Reception cohort.

The coloured lines represent the most recent GP patients datasets, shown by the year of start in Reception and by age.

Starts Reception in September	2006	2007	2008	2009	2010	2011	2012	2013	2014	2015	2016	2017	2018	2019	2020	2021	2022	2023	2024
Age (as at 31/08/2020):	18	17	16	15	14	13	12	11	10	9	8	7	6	5	4	3	2	1	0
Births	156	179	179	180	175	169	199	161	150	164	160	133	144	120	117	121	111	100	
Health Authority Data 2015/16	298	312	298	282	278	286	267	237	239	228	198	177	152	132	108				
Health Authority Data 2016/17	393	392	394	369	364	363	377	311	330	282	277	246	211	192	171	196			
Health Authority Data 2017/18	308	309	294	290	318	305	304	249	261	226	197	163	170	130	139	139	107		
Health Authority Data 2018/19	307	318	328	290	325	334	314	275	273	253	218	178	175	157	142	143	127	107	
Health Authority Data 2019/20	294	317	332	293	314	320	314	284	281	268	217	192	192	163	157	149	132	105	117

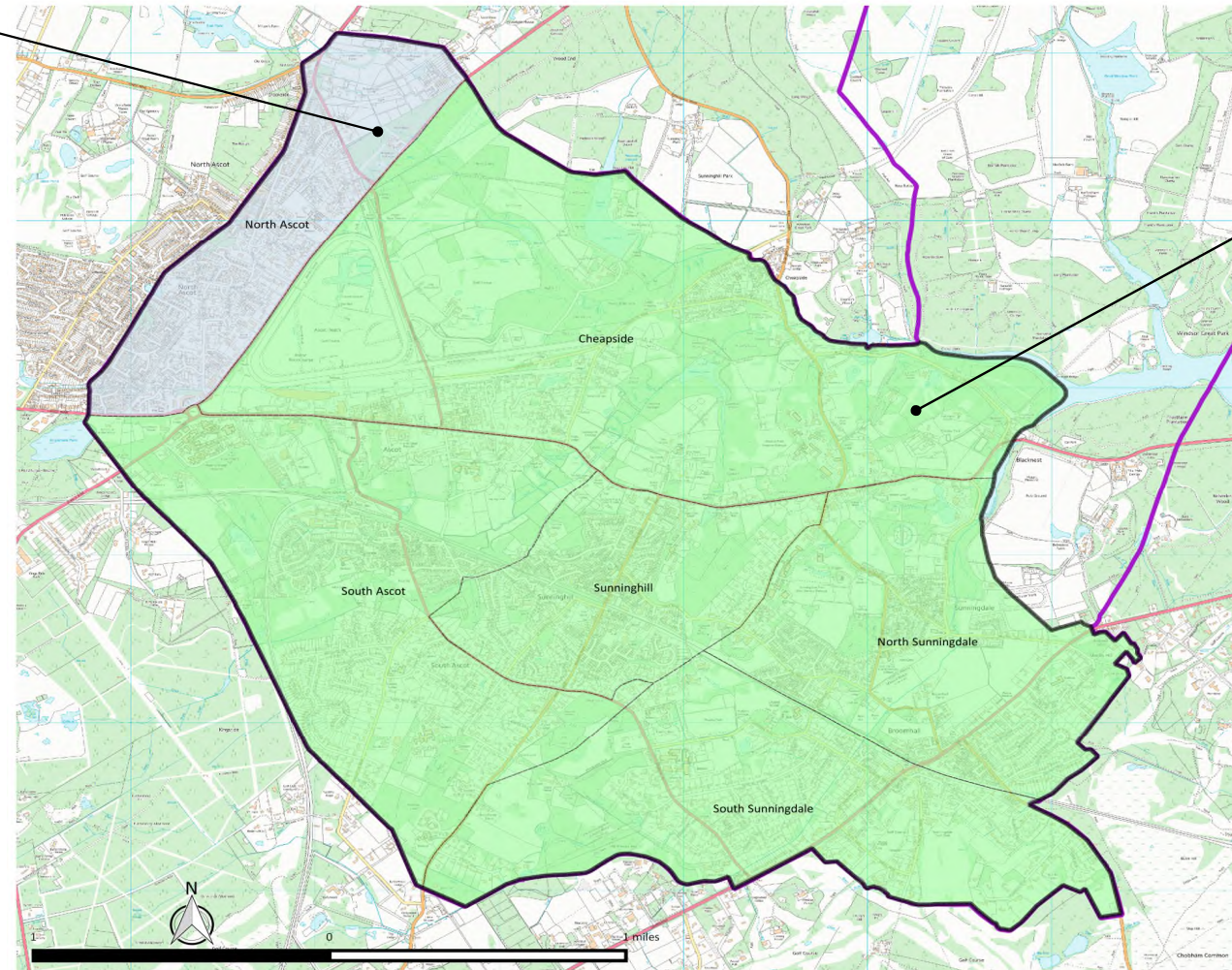
Starts Year 7 (Secondary) in Sept:	2013	2014	2015	2016	2017	2018	2019	2020	2021	2022	2023	2024	2025	2026	2027	2028	2029	2030	2031	

2. Demographic Data for North Ascot

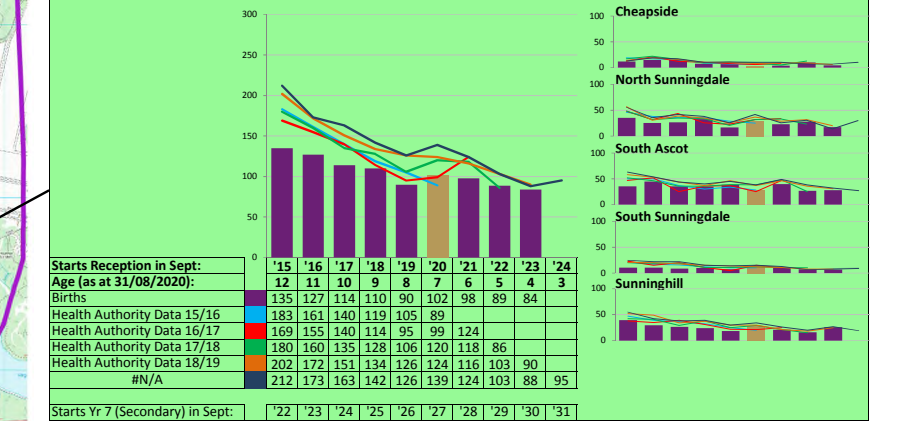


Starts Reception in Sept:	'15	'16	'17	'18	'19	'20	'21	'22	'23	'24
Age (as at 31/08/2020):	12	11	10	9	8	7	6	5	4	3
Births	29	33	19	34	30	15	23	22	16	
Health Authority Data 15/16	44	36	36	31	25	19				
Health Authority Data 16/17	43	40	31	35	23	19	21			
Health Authority Data 17/18	46	37	28	42	24	19	21	21		
Health Authority Data 18/19	51	46	27	41	31	18	27	24	17	
#N/A	56	44	29	50	37	18	25	29	17	22

Starts Yr 7 (Secondary) in Sept:	'22	'23	'24	'25	'26	'27	'28	'29	'30	'31



3. Demographic Data for Ascot



Starts Reception in Sept:	'15	'16	'17	'18	'19	'20	'21	'22	'23	'24
Age (as at 31/08/2020):	12	11	10	9	8	7	6	5	4	3
Births	135	127	114	110	90	102	98	89	84	
Health Authority Data 15/16	183	161	140	119	105	89				
Health Authority Data 16/17	169	155	140	114	95	99	124			
Health Authority Data 17/18	180	160	135	128	106	120	118	86		
Health Authority Data 18/19	202	172	151	134	126	124	116	103	90	
#N/A	212	173	163	142	126	139	124	103	88	95

Starts Yr 7 (Secondary) in Sept:	'22	'23	'24	'25	'26	'27	'28	'29	'30	'31

(c) Crown copyright and database right 2020 OS 100018818
1. This map and the information contained within it are protected by intellectual property rights.
2. Whilst you have certain statutory rights that include to view and read the map, you are granted no automatic additional use rights whatsoever.
3. You the recipient of the information must ensure that the map meets your needs and are entirely responsible for the consequences of using the map.
4. This map is NOT INTENDED for any use other than for lawful purposes.