

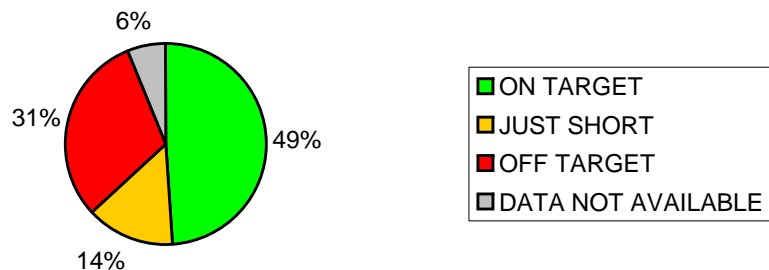
**Appendix I**

**QUARTER FOUR**

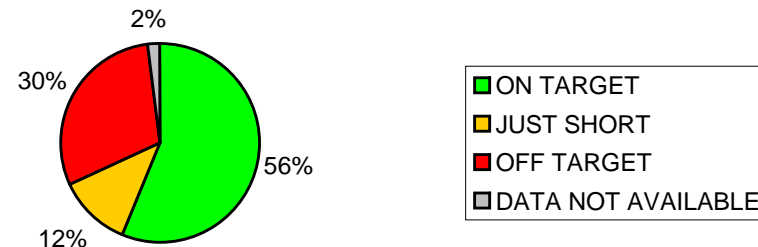
**PERFORMANCE REPORT**

**June 2009**

**Q4 08/09 Progress towards existing LAA Reward  
Target 2007 - 10**



**Q3 08/09 Progress towards existing LAA Reward  
Target 2007 - 10**



**Q4 Breakdown of Projected Reward Available**

Status	%	Reward Amount
On Target	49%	£1,759,728.50
Just Short	14%	£506,781.68
Off Target	31%	£1,112,495.43
Not Available	6%	£211,273.29*
<b>TOTAL</b>	<b>100%</b>	<b>£3,590,278.90</b>

**Q3 Breakdown of Projected Reward Target Available**

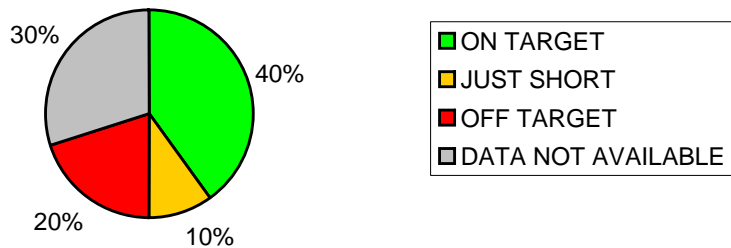
Status	%	Reward Amount
On Target	56%	£2,008,286.27
Just Short	12%	£441,880.48
Off Target	29%	£1,057,260.37
N/A	2%	£82,851.78
<b>TOTAL</b>	<b>100%</b>	<b>£3,590,278.90</b>

\* As KS3 has been dropped for 2009/10, this impacts two targets.

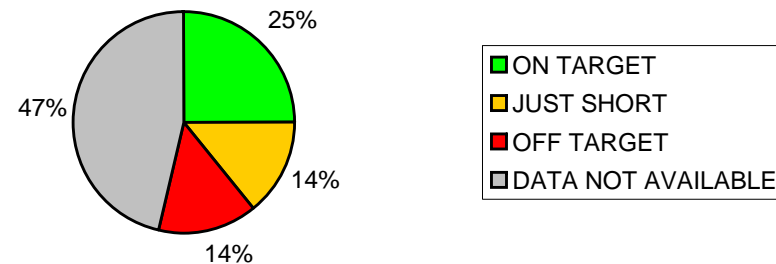
Recommendation from GOSE awaited re this reward target of £128,421.51

The Community Partnership Board Ambition leads have identified where pump priming funds may be used to improve performance

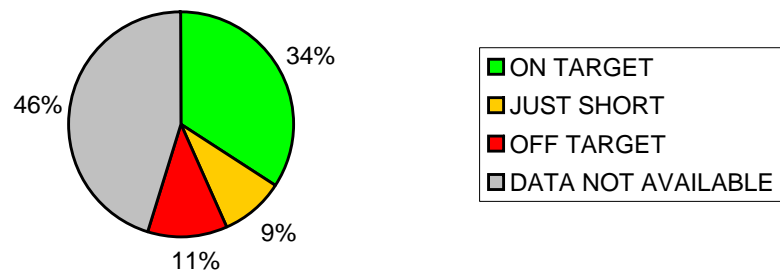
**Q4 08/09 Progress towards LAA Improvement  
Targets 2008 - 11**



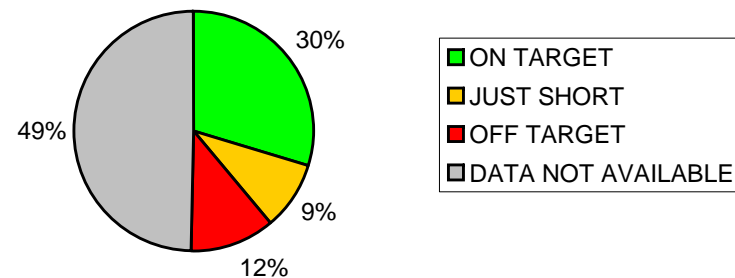
**Q3 08/09 Progress towards LAA Improvement  
Targets 2008 - 11**



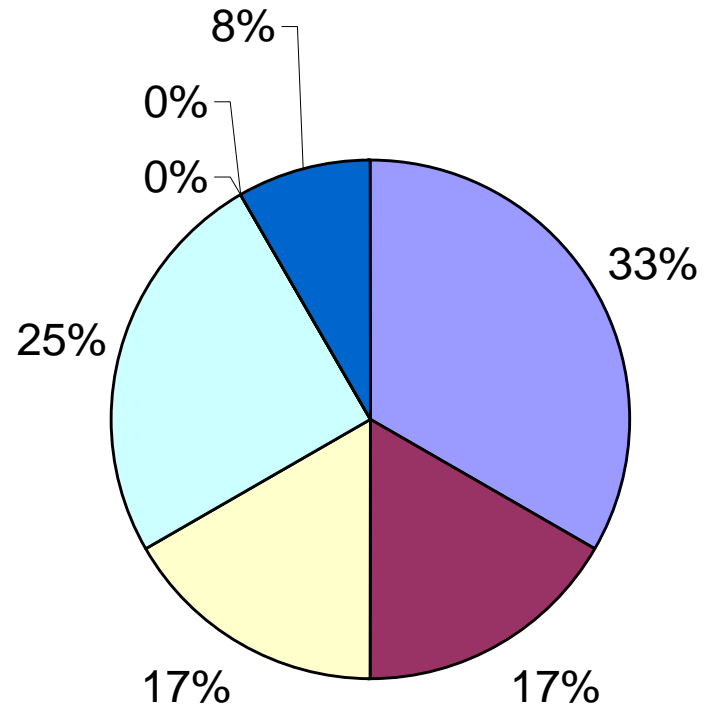
**Q4 08/09 Progress towards all National Indicator  
Targets**



**Q3 08/09 Progress towards all National Indicator  
Targets**

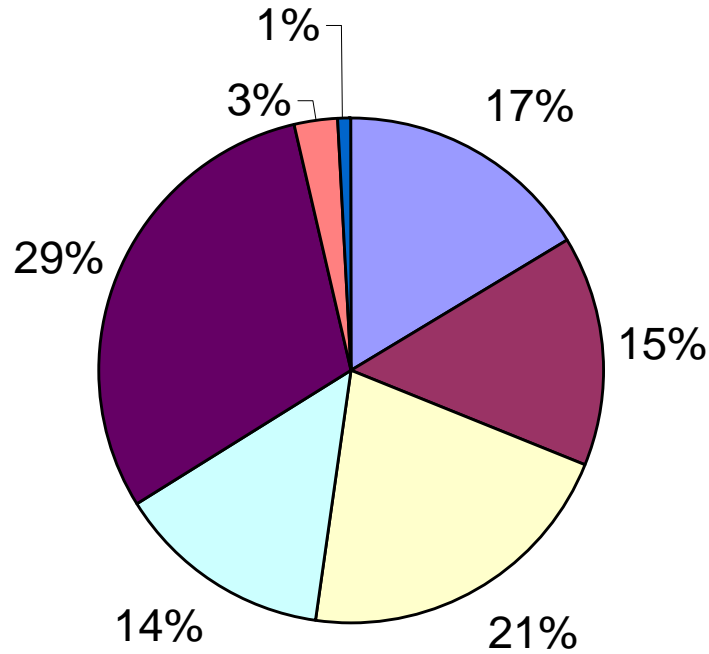


## Breakdown of LAA targets where data is unavailable for Quarter Four



- Measured through Place Survey
- Deferred
- Pending population of data hub
- Awaiting data from partners
- No Target (New Indicator)
- Indicator withdrawn or not required
- Awaiting Council data

## Breakdown of National Indicators where data is unavailable for Quarter Four



- Measured through Place Survey
- Deferred
- Pending population of data hub
- Awaiting data from partners
- No Target (New Indicator)
- Indicator withdrawn or not required
- Awaiting Council data