

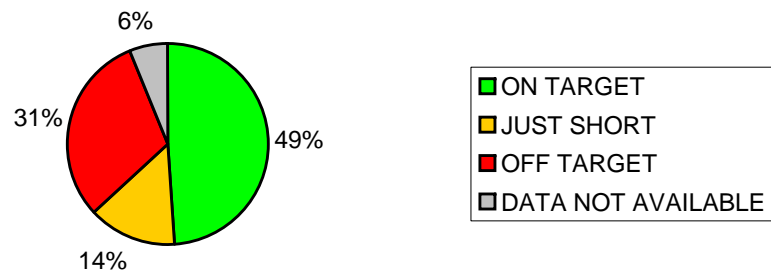
Appendix I

QUARTER FOUR

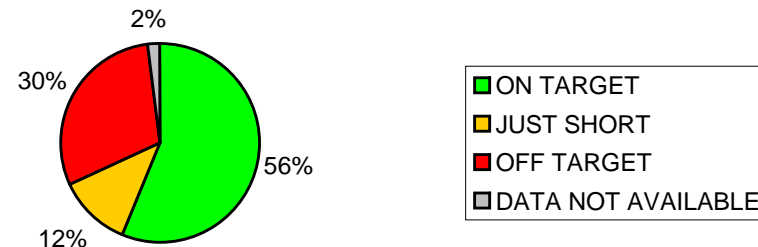
PERFORMANCE REPORT

June 2009

**Q4 08/09 Progress towards existing LAA Reward
Target 2007 - 10**



**Q3 08/09 Progress towards existing LAA Reward
Target 2007 - 10**



Q4 Breakdown of Projected Reward Available

Status	%	Reward Amount
On Target	49%	£1,759,728.50
Just Short	14%	£506,781.68
Off Target	31%	£1,112,495.43
Not Available	6%	£211,273.29*
TOTAL	100%	£3,590,278.90

Q3 Breakdown of Projected Reward Target Available

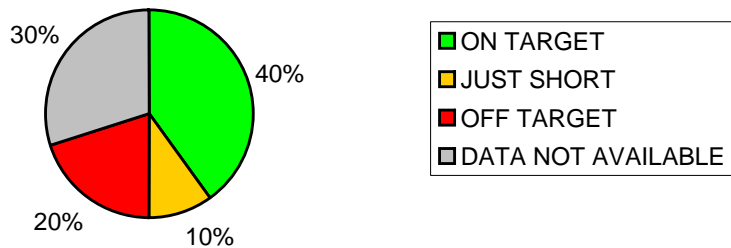
Status	%	Reward Amount
On Target	56%	£2,008,286.27
Just Short	12%	£441,880.48
Off Target	29%	£1,057,260.37
N/A	2%	£82,851.78
TOTAL	100%	£3,590,278.90

* As KS3 has been dropped for 2009/10, this impacts two targets.

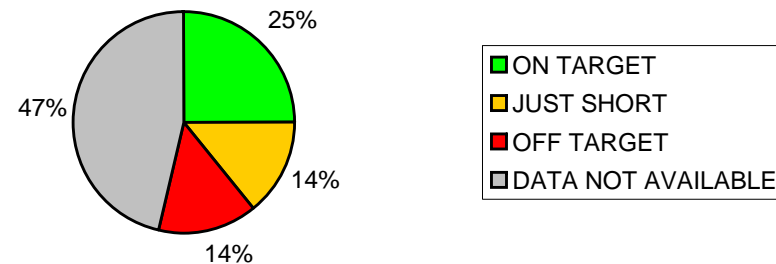
Recommendation from GOSE awaited re this reward target of £128,421.51

The Community Partnership Board Ambition leads have identified where pump priming funds may be used to improve performance

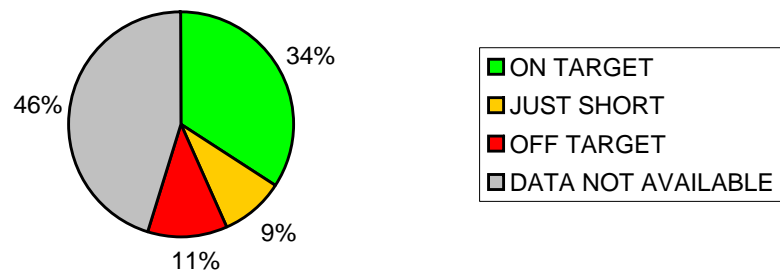
**Q4 08/09 Progress towards LAA Improvement
Targets 2008 - 11**



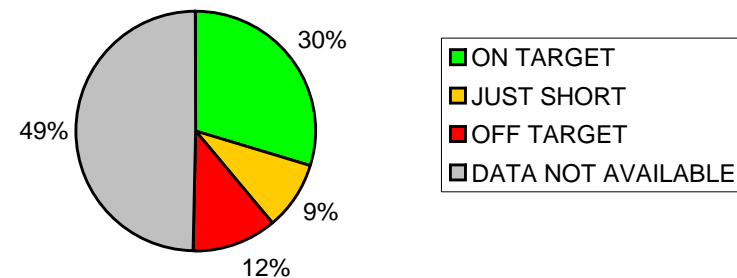
**Q3 08/09 Progress towards LAA Improvement
Targets 2008 - 11**



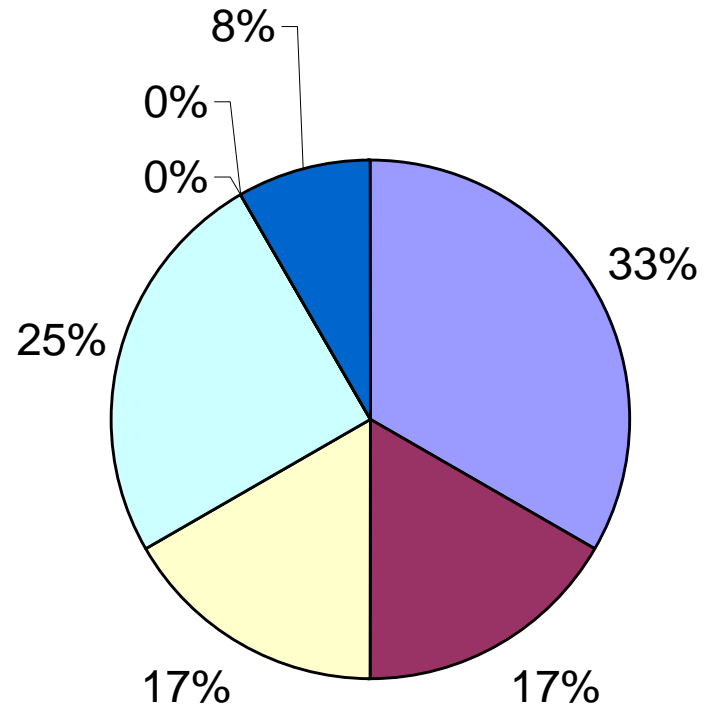
**Q4 08/09 Progress towards all National Indicator
Targets**



**Q3 08/09 Progress towards all National Indicator
Targets**

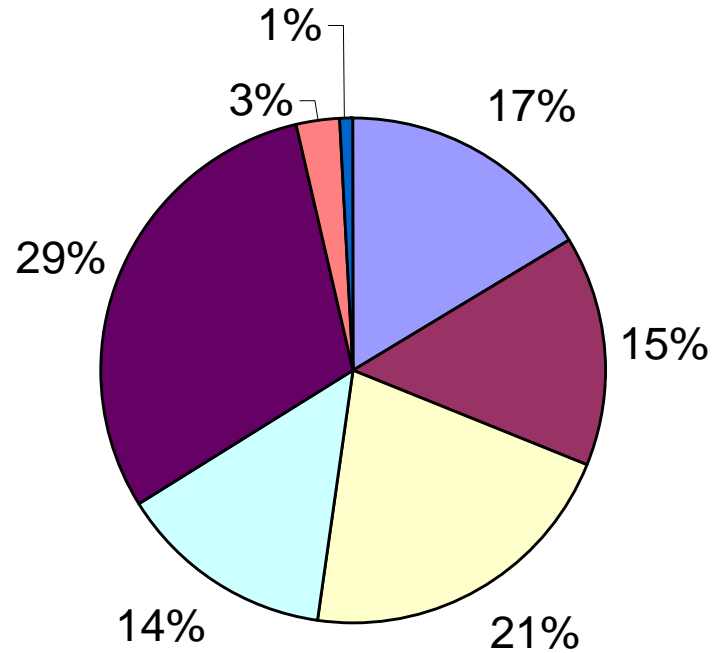


Breakdown of LAA targets where data is unavailable for Quarter Four



- Measured through Place Survey
- Deferred
- Pending population of data hub
- Awaiting data from partners
- No Target (New Indicator)
- Indicator withdrawn or not required
- Awaiting Council data

Breakdown of National Indicators where data is unavailable for Quarter Four

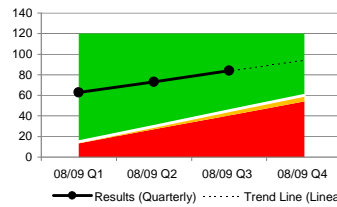
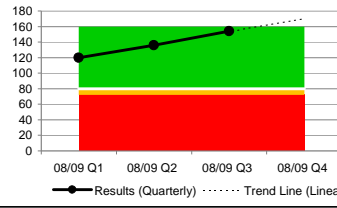
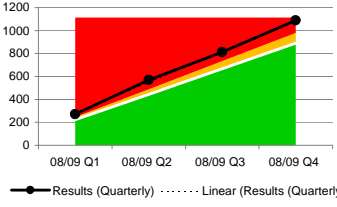
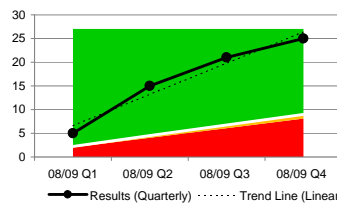
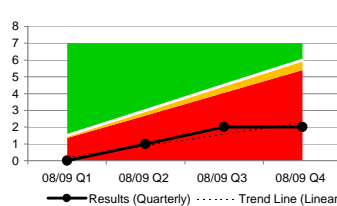


- Measured through Place Survey
- Deferred
- Pending population of data hub
- Awaiting data from partners
- No Target (New Indicator)
- Indicator withdrawn or not required
- Awaiting Council data

Appendix II: End of Year Performance Highlight Report (Local Area Agreement targets & National Indicators by exception)

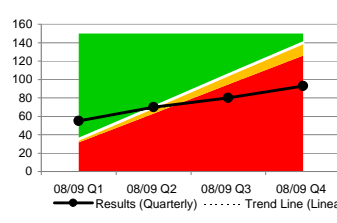
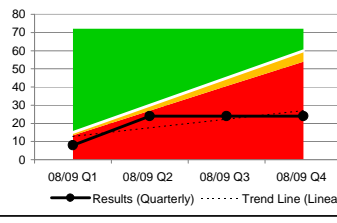
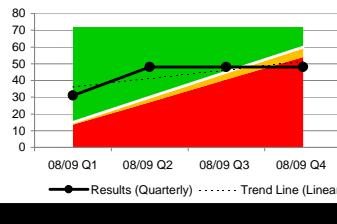
Deferred to 2009/10
 No information available

Ref	National Indicators	Lead Officer	Lead Member	Good is High or Low	Results 2007/08	Collection Details	Quarterly Results for 2008/09 (Proxy measures have been developed where indicated)				Direction of travel (latest result compared to most recent results)	Targets 2008/09	Target 2009/10	Target 2010/11	Problems/Issues/Commentary (including trends)	Trend Analysis	Latest quarterly figure against yearly target
							Q1	Q2	Q3	Q4							
Existing LAA Reward Targets 2007-10																	
LAA 1	Existing reward target: to increase percentage of schools achieving the new National Healthy Schools Standard (NHSS)	Cyndy Gray	Cllr Quick	High	67.0%	Quarterly	67%	72%	72%	74%		68.0%	80% by July 2009		This is currently exceeding target - 74% (Mar 09) against target of 68%. Next target is 80% by July 09. National Healthy Schools Programme Quality Assurance Group verify schools' self validation quarterly. One room school achieved the NHSS during Mar 09.		On Target
LAA 2.1	Existing reward target: improving the life chances of all children and young people: Percentage of all pupils (excluding those of Pakistani origin) attaining 5+ A*-C at GCSE (or equivalent) including English and Maths	Sandy Brown	Cllr Quick	High	56% (results from academic year 2006/07)	Annual	59% (based on academic year 2007/08)					61% by Aug 09	61%		LAA targets set in 2007 when baseline was 49.8%. 59% figure is based on the academic year 2007-08.		Just Short
LAA 2.2	Existing reward target: improving the life chances of all children and young people: Percentage of pupils of Pakistani origin attaining 5+ A*-C at GCSE (or equivalent) including English and Maths	Sandy Brown	Cllr Quick	High	37% (results from academic year 2006/07)	Annual	43% (based on academic year 2007/08)					44.5%	46.5% by Aug 09		Just short of target for academic year 07/08 - 43% against target of 44.5%. However, significantly up from the previous year (37%) and from baseline of 33%. This improvement is greater than the improvement for pupils not of Pakistani origin (which was 3% in 07/08, also just short of target). Target for 08/09 academic year is 46.5%.		Just Short
LAA 3.1	Existing reward target: Narrowing the attainment gap between underachieving groups and all RBWM pupils: Percentage of boys achieving Level 4+ in writing at Key Stage 2	Karen Butler	Cllr Quick	High	65.3% (results from academic year 2006/07)	Annual	66.9% (based on academic year 2007/08)					62%	64% by Aug 09		Exceeded target for academic year 07/08 - 66.9% against target of 62%, showing sustained improvement. Target for 08/09 academic year is 64%.		On Target
LAA 3.2	Existing reward target: Narrowing the attainment gap between underachieving groups and all RBWM pupils: Percentage of boys achieving Level 6 in English at Key Stage 3	Karen Butler	Cllr Quick	High	25% (results from academic year 2006/07)	Annual	32% (based on academic year 2007/08)					34%	37% by Aug 09		As a consequence of the announcement of the end of Key Stage 3 (KS3) testing, we will no longer be able to monitor progress this indicator. Clarification being sought from GOSE about the impact of their decision on the LAA reward target.		Just Short
LAA 3.3	Existing reward target: Narrowing the attainment gap between underachieving groups and all RBWM pupils: Percentage of pupils of Pakistani origin achieving Level 5+ at the end of Key Stage 3 in all three subjects of English, Maths and Science	Sandy Brown	Cllr Quick	High	51% (results from academic year 2006/07)	Annual	50.6% (based on academic year 2007/08)					52.5%	54% by Aug 09		We will not be able to report against this indicator this year as there are no longer statutory national tests at the end of KS3 (figure for 2007/8 has been revised using latest pupil data)		Just Short
LAA 4.1	Existing reward target: Improve carer's quality of life: No. of carers receiving a specific service (The number of carers receiving a specific service from RBWM and its partners after receiving a carers assessment or review)	Ed Thompson	Cllr Dudley	High	335	Quarterly cumulative (quarterly figure as shown in brackets)	232	269 (37)	298 (29)			338	362		Quarter 4 data are not available until June 09. Currently on track to meet the year 2 target of 338. Figures are adjusted at year end to reflect no of services delivered.		On Target (based on Qtr 3 result)
LAA 4.2	Existing reward target: Improve carer's quality of life: Satisfaction with carers' services	Ed Thompson	Cllr Dudley	High	57.7%	Annual	57.4%					58.5%	60.6%		The data came from the Annual Carers' Survey which was held in Feb 09. RBWM are still waiting for the analysis of the responses. Year one result was 57.7% (target for year one was 54%). For year 2 result, we are looking to touch the year 3 target of 60.6%.		Just Short

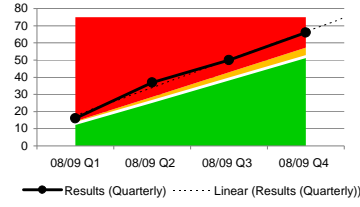
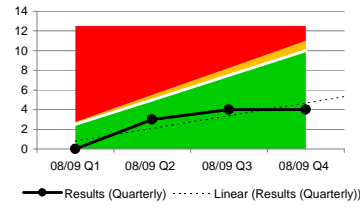
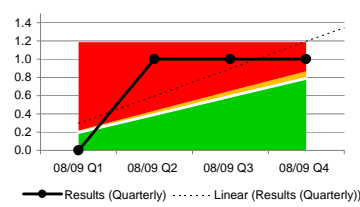
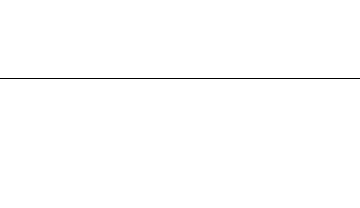
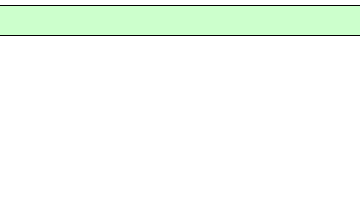


Ref	National Indicators	Lead Officer	Lead Member	Good is High or Low	Results 2007/08	Collection Details	Quarterly Results for 2008/09 (Proxy measures have been developed where indicated)				Direction of travel (latest result compared to most recent results)	Targets 2008/09	Target 2009/10	Target 2010/11	Problems/Issues/Commentary (including trends)	Trend Analysis	Latest quarterly figure against yearly target
							Q1	Q2	Q3	Q4							
LAA 5	Existing reward target: Increase numbers of 4 week smoking quitters from Black & Minority Ethnic (BME) backgrounds	Philip Brooks (Ed Thompson)	Cllr Dudley	High	69	Quarterly cumulative	82	92	104					Quarter 4 data will not be available until early July 09. 20% of performance reward target for this indicator will be withheld if the number of 4 week quitters in the borough overall drops below the agreed target for NI 123 in the year ending March 2010. Target for the year has already been achieved.		On Target (based on Qtr 3 result)	
LAA 6	Existing reward target: Reduce BMI of people >30 to <27 (number of people with BMI >30 losing 3% of their total weight through structured exercise and weight loss programmes).	Kevin Mist	Cllr Dudley	High	102	Quarterly cumulative (quarterly figure as shown in brackets)	120	136 (16)	154 (29)	166 (12)				Project follows progress of a cohort of SMILE club members as they under take physical activity and nutritional guidance to reduce weight. Target for the year has already been achieved.		On Target	
LAA 7	Reduce non-domestic violent crime No. of incidents of non-domestic violent crime	Dave Perkins (Brian Martin/Thames Valley Police)	Cllr Rayner	Low	1062	Quarterly cumulative (quarterly figure as shown in brackets)	272	568 (296)	811 (243)	1088 (277)				Target set by Police. Police now agree that is unachievable as a reduction of 58% in crime is unrealistic.		Off Target	
LAA 8.1	Existing reward target: Reduce Anti-Social Behaviour (ASB): No. completing Acceptable Behaviour Contracts (ABC's) successfully. An ABC is a written agreement made between a person who has been involved in ASB and the Local Authority/relevant partner e.g. Police	Gail Lumsden	Cllr Rayner	High	7	Quarterly cumulative (quarterly figure as shown in brackets)	5	15 (10)	21 (6)	25 (4)				Completed - reward target achieved		On Target	
LAA 8.2	Existing reward target: Reduce anti-social behaviour: No. signed up to ABCs who successfully complete intervention programme (for example, Youth Inclusion Support Programme, Counselling, Mediation and Education sessions)	Gail Lumsden	Cllr Rayner	High	0	Quarterly cumulative (quarterly figure as shown in brackets)	0	1 (1)	2 (1)	2 (0)				Target is three year average. Recovery plan being implemented dependent upon proposed appointment of specialist officer. Anticipated that target achievable by 2010.		Off Target	
LAA 8.3	Existing reward target: Reduce anti-social behaviour: People's perception of ASB issues (using the 7 issues stated in the Best Value Survey)	Gail Lumsden	Cllr Rayner	Low	N/A	Annual	Measured through survey in late 2009 which will replicate former Best Value survey				Not Available	N/A	17%	The survey will be carried out in Sept/Oct 09. Based on past experience, the results will be available in early 2010.		Not Available	

Ref	National Indicators	Lead Officer	Lead Member	Good is High or Low	Results 2007/08	Collection Details	Quarterly Results for 2008/09 (Proxy measures have been developed where indicated)				Direction of travel (latest result compared to most recent results)	Targets 2008/09	Target 2009/10	Target 2010/11	Problems/Issues/Commentary (including trends)	Trend Analysis	Latest quarterly figure against yearly target
							Q1	Q2	Q3	Q4							
LAA 9.1	Existing reward target: reduce arson incidents: Deliberate fires (excluding vehicles)	Dave Perkins (Brian Martin/Royal Berks Fire & Rescue Service)	Cllr Rayner	Low	18	Quarterly cumulative (quarterly figure as shown in brackets)	8	12 (4)	19 (7)	21 (3)	↑	28 (deliberate primary fires, excluding vehicles)	28		The 08/09 target has been achieved and performance has been consistently successful. Averaging at 1.7 fires per month. In order to achieve that target, we need to achieve less than 3.4 fires per month in 09/10.		On Target
LAA 9.2	Existing reward target: reduce arson incidents: Deliberate primary fires in vehicles	Dave Perkins (Brian Martin/Royal Berks Fire & Rescue Service)	Cllr Rayner	Low	46	Quarterly cumulative (quarterly figure as shown in brackets)	13	18 (5)	31 (13)	39 (8)	↑	67 (deliberate primary fires in vehicles)	67		The 08/09 target has been achieved and performance has been consistently successful. Averaging at 3.5 fires per month to date. To reach the 09/10 target, we need to achieve less than 8.9 fires per month.		On Target
LAA 9.3	Existing reward target: reduce arson incidents: Deliberate secondary fires	Dave Perkins (Brian Martin/Royal Berks Fire & Rescue Service)	Cllr Rayner	Low	83	Quarterly cumulative (quarterly figure as shown in brackets)	16	32 (16)	56 (24)	76 (20)	↑	155 (deliberate secondary fires)	155		The 08/09 target has been achieved and performance has been consistently successful. Averaging at 6.5 fires per month to date. To reach the 09/10 target, we need to achieve less than 23.8 fires per month.		On Target
LAA 10a	Existing reward target: Reduce waste to landfill and increase recycling: % of municipal waste landfilled	Larry Wolfe	Cllr Bicknell	Low	Not Available	Quarterly	66.13%	64.86%	62.65%	62.78%	↓	66.83%	66.25%		Existing public support for recycling is high and will continue over the next two years. A number of initiatives to recycle have been introduced throughout this programme, which include promotion of green waste services, recycling services & media events (Maidenhead at the Movies, Maidenhead Carnival, etc). There have been other extensive promotion to increase recycling and reduce residual to landfill REWARD TARGET ACHIEVED.		On Target
LAA 10b	Existing reward target: Reduce waste to landfill and increase recycling: % of municipal waste recycled	Larry Wolfe	Cllr Bicknell	High	34%	Quarterly	33.87%	35.14%	37.35%	37.22%	↓	33.17%	33.75%		Existing public support for recycling is high and will continue over the next two years. A number of initiatives to recycle have been introduced throughout this programme, which include promotion of green waste services, recycling services & media events (Maidenhead at the Movies, Maidenhead Carnival, etc). There have been other extensive promotion to increase recycling and reduce residual to landfill REWARD TARGET ACHIEVED. Super performance by the Council and its contractors and local residents. Public Protection dept will be bidding for the performance money in order to fund/off set the costs of the RecycleBank project.		On Target

Ref	National Indicators	Lead Officer	Lead Member	Good is High or Low	Results 2007/08	Collection Details	Quarterly Results for 2008/09 (Proxy measures have been developed where indicated)				Direction of travel (latest result compared to most recent results)	Targets 2008/09	Target 2009/10	Target 2010/11	Problems/Issues/Commentary (including trends)	Trend Analysis	Latest quarterly figure against yearly target
							Q1	Q2	Q3	Q4							
LAA 11.1	Existing reward target: to increase levels of volunteering: No. of people involved in volunteering	Harjit Hunjan	Cllr Bateson	High	Not Available	Annual	Latest results (2008) 1384				Not Available	1301	1370		Measured through Annual Volunteering Survey. The latest result for calendar year of 2008. 2009 results will not be available until early 2010. This is a very challenging target, in part due to the disproportionately high number of BME volunteers recorded in the baseline survey - it is not clear why the figure was so high. There is currently a significantly high level of demand for volunteering placements for people with mental health issues and learning disabilities, but a very limited number of placements are available given the resources needed to support them. See below comment.		On Target
LAA 11.2	Existing reward target: to increase levels of volunteering: Volunteers from BME backgrounds	Harjit Hunjan	Cllr Bateson	High	Not Available	Annual	Latest results (2008) 238				Not Available	558	600		We are underachieving in meeting the BME, No Qualifications and Disability targets. The greatest challenge is to meet the target for BME volunteers, which triggers the largest percentage of reward grant. Unless improvements are made, it is unlikely that we will see any significant improvement on current numbers in the next 18 months to September 2010. Therefore we need to examine other ways of reaching the three subgroups within the target. Key messages to be extracted from the Volunteering Audit are: * A large % of volunteers are not being captured which skews our picture of volunteering. Next survey should include RBWM employees. * Additional data gathering methods should be considered to maximise responses. * An action plan for increasing volunteers from the two worst performing subgroups is required (BME and No Qualifications sub groups). * The target for the number of volunteers with a disability also shows a positive trend and we need to ensure that this target (which is within reach) is not neglected. * The target for the overall number of volunteers is being met and a steady year-on-year increase means that actions to raise awareness of volunteering will support this trend.		Off Target
LAA 11.3	Existing reward target: to increase levels of volunteering: Volunteers with no qualifications	Harjit Hunjan	Cllr Bateson	High	Not Available	Annual	Latest results (2008) 176				Not Available	261	280		as above The 2010 target maybe partially met		Off Target
LAA 11.4	Existing reward target: to increase levels of volunteering: Volunteers with a disability	Harjit Hunjan	Cllr Bateson	High	Not Available	Annual	Latest results (2008) 126				Not Available	150	160		as above The 2010 target is unlikely to be met		Off Target
LAA 12.1	Existing reward target: Create cleaner, greener and safer public space: No. of parks achieving Green Flag Status	Kevin Mist	Cllr Rayner	High	Not Available	Quarterly	1	1 (0)	1 (0)	1 (0)		2	6		Despite we have not met the target for year one, plans are in place to achieve the 3-year target. During 2008, 2 parks were entered and only one was awarded a green flag. For 2009, we have entered 5 parks for Green Flags. Judging will take place in May 09 but the awards are not announced until July 09. We will benefit from a written report on each park which we should be able to use to plan our submissions for the same parks in 2010, the final judgement year when all 6 parks need to pass their green flag appraisal. A significant programme of parks improvement is underway.		Off Target
LAA 12.2	Existing reward target: Create cleaner, greener and safer public space: % population who are 'fairly' or 'very satisfied' with parks and open spaces	Kevin Mist	Cllr Rayner	High	Not Available	Triennial	Measured through survey in late 2009 which will replicate former Best Value survey				Not Available	74%	89%		Increased investments in parks over past few years should result in positive response to survey, current feed back is very positive. Results will be measured through biannual survey of borough parks and open spaces by BMG.		Not Available

Ref	National Indicators	Lead Officer	Lead Member	Good is High or Low	Results 2007/08	Collection Details	Quarterly Results for 2008/09 (Proxy measures have been developed where indicated)				Direction of travel (latest result compared to most recent results)	Targets 2008/09	Target 2009/10	Target 2010/11	Problems/Issues/Commentary (including trends)	Trend Analysis	Latest quarterly figure against yearly target
							Q1	Q2	Q3	Q4							
LAA 13.1	Existing reward target: increase employment rates within local area: Skills development for people who are unemployed or disadvantaged (Courses include nationally accredited skills for life qualification, NVQ, accredited Open College network course, accredited IT course, Grow Our Own accredited Personal development programme, Grow Our Own accredited pre employment programme)	Amanda Waters	Clr Kellaway	High	N/A	Quarterly cumulative (quarterly figure as shown in brackets)	55	70 (15)	80 (10)	93 (13)	↑	140 people completing a skills development course	250		We are currently working with Ade to initiate provision and sharing resources in the RBWM area. Other organisations interested in partnering provisions are: Executive Job Club and Probation service. There is no specialist funding for a team working with the client group which includes high levels of mental ill health and disabilities. Lead Officer has advised that they do not expect to meet the target due to the current economic climate. Plans are in place to meet the target as follows: - gain approval to utilise funds for a support worker to be recruited. Approval has been granted and recruitment in place. - sign up more partners to share information when they have clients within eligible categories that achieve skills or move into jobs. RBWM are unable to review the target with GOSE as the 2007-2010 LAA is now 'frozen'. GOSE has informed that partners cannot be utilised unless a member of GROW has had an interaction with the client and provided the progression route. Therefore work with some partners has ceased and we are investigating alternatives. Met with new manager of JCP Maidenhead in February and have provided information of clients that we have had an interaction with but JCP 'maybe' too busy to assist with information (were original partners in formulating the Reward target)		Off Target
LAA 13.2	Existing reward target: increase employment rates within local area Assisting people who are unemployed or disadvantaged to secure sustainable employment (16 hours per week for 13 weeks or more)	Amanda Waters	Clr Kellaway	High	51	Quarterly cumulative (quarterly figure as shown in brackets)	8	24 (16)	24 (0)	24 (0)	→	60 people to secure sustainable employment	155		Increasingly difficult to gain employment in current market for people within target group. Employers in current climate not supportive of employing staff with higher dependency levels and support needs and more often the clients also have low skill levels. Clients have a long distance to travel, and often require more than a year of support before they are able to access mainstream employment.		Off Target
LAA 13.3	Existing reward target: increase employment rates within local area: Assisted to secure supported permitted work (people that are registered with a learning or physical disability on specific unemployment benefits going into work for up to 26 weeks below 16 hours per week with the view to progressing into full time work over 16 hours.	Amanda Waters (Sally Palmer)	Clr Kellaway	High	32	Quarterly cumulative (quarterly figure as shown in brackets)	32	48 (16)	48 (0)	48 (0)	→	60 (no. of people)	140		There is a concern that this is at risk due to the downturn in the current market. Adult Care Unit are no longer working on this target as it is deemed unattainable and they are focusing on the target in the revised LAA.-		Off Target
New LAA Improvement Targets 2008-11																	
NI 1	NI 1 % of people who believe people from different backgrounds get on well together in their local area	Harjit Hunjan	Clr Bateson	High	N/A	Biennial Place Survey	Awaiting Place Survey results			Not Available	79%	No Place Survey	82.80%	Awaiting for final weighted results from the Place Survey (expected around June 09)		Not Available	
NI 4	NI 4 % of people who feel they can influence decisions in their locality (measured through Place Survey, the extent to which people feel they are able to influence decisions affecting their local area)	Harjit Hunjan	Clr Bateson	High	N/A	Biennial Place Survey	Awaiting Place Survey results			Not Available	27.90%	No Place Survey	32%	Awaiting for final weighted results from the Place Survey (expected around June 09)		Not Available	
NI 7	NI 7 Environment for a thriving third sector (measured through the Third Sector Survey, the contribution that RBWM and partners make to create an environment in which independent third sector organisations can be successful)	Harjit Hunjan	Clr Bateson	High	N/A	Biennial	15.60%			Not Available	15.60%	Not required	19.90%	This indicator will be measured via the Third Sector survey in 2008 and again in 2010. Target was based on dependent on outcome of the 2008 Third Sector survey which is used as baseline. Result was published at end of March 09 - the National score was 16.2%. The target was successfully negotiated as part of the LAA refresh process.		On Target	

Ref	National Indicators	Lead Officer	Lead Member	Good is High or Low	Results 2007/08	Collection Details	Quarterly Results for 2008/09 (Proxy measures have been developed where indicated)				Direction of travel (latest result compared to most recent results)	Targets 2008/09	Target 2009/10	Target 2010/11	Problems/Issues/Commentary (including trends)	Trend Analysis	Latest quarterly figure against yearly target
							Q1	Q2	Q3	Q4							
NI 8	NI 8 Adult participation in sport and active recreation (to measure participation in sport and active recreation at the local level by means of a telephone survey carried out by Sport England)	Kevin Mist	Cllr Dudley	High	24.20%	Annual	24.70%										Off Target
NI 16	NI 16 Serious acquisitive crime rate (number of serious acquisitive crimes per 1,000 population). Serious acquisitive crime is defined as the following: Burglary in a dwelling; Aggravated burglary in a dwelling; Robbery of Business Property; Robbery of Personal Property; Theft of Unauthorised taking of a motor vehicle; Aggravated Vehicle Taking; Theft from a Vehicle.	Dave Perkins (Brian Martin)	Cllr Rayner	Low	New	Quarterly cumulative (quarterly figure as shown in brackets)	5.65 (per 1000)	12.64 (per 1000)	18.47 (per 1000)	23.89 (per 1000)					Overall, we have seen a decrease in serious acquisitive crime but we have been hit by burglary in dwellings. It is too early at this stage to say whether this is as a result of the current economic climate. We out-turned slightly worse than target despite there being 8% less crimes than last year. A Joint Action Group (JAG) was formed in Jan 09.		Just Short
NI 21	NI 21 Dealing with local concerns about anti-social behaviour and crime by the local council and police (measured through Place Survey with residents asked to assess how well the Council and Police are tackling anti-social behaviour)	Dave Perkins (Brian Martin)	Cllr Rayner	TBC	New	Biennial Place Survey	Awaiting Place Survey results				Not Available	25.10%	No Place Survey	TBC (to be confirmed by Home Office once data for the 2010 Place Survey are available)	Awaiting for final weighted results from the Place Survey. Target due to be negotiated in early Feb, but overall this year, there has been really strong performance in areas such as reducing criminal damage (19.4% down on last year) and anti-social behaviour (13.4% down on last year). This will make any perception targets difficult to achieve as it will be difficult to sustain these kinds of reduction.		Not available
NI 30	NI 30 Re-offending rate of prolific and priority offenders (The change in convictions for Prolific and other Priority Offenders (PPOs) over a 12 months period)	Dave Perkins (Brian Martin)	Cllr Dudley	Low	New	Quarterly cumulative (quarterly figure as shown in brackets)	16	33 (17)	56 (23)	65 (9)					The target was to reduce PPO Re-Offending by 25% which was achieved, to reduce actual offences from 99 over the period 07/08 to 74. The provisional offences were 65 however this will not be fully confirmed for another 3 months due to the time lag on PNC.		On Target
NI 38	NI 38 Drug-related (Class A) offending rate	Dave Perkins (Brian Martin)	Cllr Rayner	Low	Not Available	Annual	Delayed to 2009/10				Not Available	Target setting deferred to 2009	Average 8.8% below baseline across 08/10 cohorts	Average 8.8% below baseline across 10/11 cohorts	The introduction of this indicator will be delayed until 2009/10 Target - average 8.8% below baseline across 09/10 and 10/11 cohorts. Reported annually.		Not Available
NI 39	NI 39 Rate of Hospital per 100,000 for Alcohol Related Harm (to reduce the number of Hospital Admissions relation to Alcohol)	Allan Brown	Cllr Dudley	Low	Not Available	Annual	996 (per 100,000 population)				Not Available	1151 (per 100,000 population)	1250 (per 100,000 pop.)	1349 (per 100,000 pop.)			On Target
NI 40	NI 40 Number of drug users recorded as being in effective treatment (measures the change in the total no. of users of crack cocaine / opiates in effective treatment e.g. that remain in treatment 12 weeks after triage)	Allan Brown	Cllr Dudley	High	217	Annual	218								Effectiveness of treatment for new and ongoing cohorts was made available at end of April. 2008/09 data 218 is based on total number of drug-users recorded as being in effective treatment in baseline year 2007/09 minus total number of drug-users recorded as being in effective treatment in current financial year.		Just Short
NI 49	NI 49 Number of primary fires and related fatalities and non-fatal casualties (excluding precautionary checks) Primary fires	Dave Perkins (Brian Martin)	Cllr Rayner	Low	New	Quarterly cumulative (quarterly figure as shown in brackets)	53	112 (59)	161 (49)	214 (53)					The target has been changed from 246 to 163.4 per annum during the LAA refresh process.		Off Target

Ref	National Indicators	Lead Officer	Lead Member	Good is High or Low	Results 2007/08	Collection Details	Quarterly Results for 2008/09 (Proxy measures have been developed where indicated)				Direction of travel (latest result compared to most recent results)	Targets 2008/09	Target 2009/10	Target 2010/11	Problems/Issues/Commentary (including trends)	Trend Analysis	Latest quarterly figure against yearly target
							Q1	Q2	Q3	Q4							
NI 49	NI 49 Number of primary fires and related fatalities and non-fatal casualties (excluding precautionary checks) Dwelling fires	Dave Perkins (Brian Martin)	Cllr Rayner	Low	New	Quarterly cumulative (quarterly figure as shown in brackets)	16	37 (21)	50 (13)	66 (16)	↓	52	52	52	RBWM are providing figure for another category - dwelling fires. When negotiation took place as to the level of stretch performance, GOSE agreed that dwelling fires could be included. The reason for this is because fatalities and non fatal casualties as a result of primary fires are relatively low. Most primary fire fatalities and non fatal casualties occur in dwellings, by focusing on reducing the larger numbers of dwelling fires, we can probably reduce fatalities and non-fatal casualties. The target has been changed from 80 to 52 per annum during the LAA refresh process.		Off Target
NI 49	NI 49 Number of primary fires and related fatalities and non-fatal casualties (excluding precautionary checks) Casualties	Dave Perkins (Brian Martin)	Cllr Rayner	Low	New	Quarterly cumulative (quarterly figure as shown in brackets)	0	3 (3)	4 (1)	4 (0)	↑	9.99	9.99	9.99	The target has been changed from 15 to 9.99 per annum during the LAA refresh process		On Target
NI 49	NI 49 Number of primary fires and related fatalities and non-fatal casualties (excluding precautionary checks) Fatalities	Dave Perkins (Brian Martin)	Cllr Rayner	Low	New	Quarterly cumulative (quarterly figure as shown in brackets)	0	1 (1)	1 (0)	1 (0)	→	0.79	0.79	0.79	The target has been changed from 1 to 0.79 per annum during the LAA refresh process		Off Target
NI 51	NI 51 Effectiveness of child and adolescent mental health (CAMHs) services	Angela Wellings	Cllr Quick	High	N/A	Annual	13				Not Available	12	14	16	A self assessment of how effectively mental health services meet children's mental health needs for 2008/09. This is an aggregated score of 1 to 4 for each of the four questions, where a total of 4 is the lowest possible score and 16 is the highest.		On Target
NI 56	NI 56 Obesity among primary school age children in Year 6 (target aims to reduce levels of childhood obesity. Indicator uses Body Mass Index data from the National Child Measurement Programme in which school nurses measure the height and weight of a cohort of primary school children every summer. Target represents the % of children in Year 6 in RBWM schools who are defined as clinically obese)	Angela Wellings	Cllr Quick	Low	13.58%	Annual	15.62%				↓	12.80%	12.40%	12.00%	15.62% is based on academic year 2007/08		Off Target
NI 119	NI 119 Self-reported measure of people's overall health and well-being	Allan Brown/Health	Cllr Dudley	High	N/A	Biennial Place Survey	Awaiting Place Survey results				Not Available	82.30%	No Place Survey	85.40%	Awaiting for final weighted results from the Place Survey (expected around June 09)		Not Available
NI 135	NI 135 Carers receiving needs assessment or review and a specific carer's service, or advice and information (this target will focus specifically upon identifying and supporting young carers)	Allan Brown/Health	Cllr Dudley	High	7% (24)	Quarterly cumulative	10.3%	14.3%	23.0%	↑	10% (33)	15% (49)	20% (66)	New indicator. Reporting commenced from Oct 08 as per government guidelines. The data will not be finalised via the Central Government Hub database until end of Aug 09. The final data will be based on the % of the number of carers receiving a 'carer's break' or other specific carers service, or advice or information, during the year following a carer's assessment of review divided by the number of adults receiving a community-based service during the year.		On Target (awaiting finalised data)	
NI 136	NI 136 People supported to live independently through social services (all adults) (this indicator measures the number of adults per 100,000 population living independently in the community that are helped through adult care services through care packages or grant funded organisations).	Allan Brown/Health	Cllr Dudley	High	4457.32 (per 100,000)	Annual (proxy is quarterly)	5094.1 per 100,000 population	5111.0 per 100,000 population	5079.0 per 100,000 population	5067.0 per 100,000 population	Not Available	4984.68 (rate per 100,000 population)	5040.71 (per 100,000 population)	5098.08 (per 100,000 population)	The data will not be finalised until end of Aug 09 via the Central Government's Hub database.		On Target

Ref	National Indicators	Lead Officer	Lead Member	Good is High or Low	Results 2007/08	Collection Details	Quarterly Results for 2008/09 (Proxy measures have been developed where indicated)				Direction of travel (latest result compared to most recent results)	Targets 2008/09	Target 2009/10	Target 2010/11	Problems/Issues/Commentary (including trends)	Trend Analysis	Latest quarterly figure against yearly target
							Q1	Q2	Q3	Q4							
NI 137	NI 137 Healthy life expectancy at age 65 (to increase the number of years of healthy life after 65).	Allan Brown/Health	Cllr Dudley	High	Not Available	Annual	Not Available				Not Available	15.95 years	16.10 years	16.25 years	Not included in the Place survey as originally indicated. CLG recently consulted on a revised Census-based methodology for this indicator. This has been delayed to 2009/10. According to the Central Government's Hub database, the first data available will be for 2002 but date for release has yet to be confirmed.		Not Available
NI 146	NI 146 Adults with learning disabilities in employment (this target intends to improve paid employment outcomes for those people with a learning disability known to adult care services - a key group at risk of social exclusion)	Allan Brown	Cllr Dudley	High	3.09%	Quarterly cumulative	10.50%		10.60%			10%	TBA	(2.5% above 08/09 baseline)	New indicator - reporting commenced October 08 as per government guidelines. Cumulative. The data are being validated. The final data will not be finalised until end of Aug 09 via the Central Government's Hub database. Target - 2.5% point increase on baseline (baseline not yet confirmed as data unavailable)		On Target
NI 155	NI 155 Number of affordable homes delivered (gross)	Chris Thomas	Cllr Dudley	High	150	Quarterly	105	188 (83)	211 (23)	219 (8)		106	107 (cumulative target is 213)	107 (target is cumulative total of 320)	Data provided to Audit Commission is annual. However, RBWM have quarterly data to monitor this. The target for over 3 years is 320. RBWM have already exceeded the first year by the 2nd quarter. We have already met year 2 target as well. 219 affordable units were delivered through Housing Association by end of Mar 09. The economic downturn may impact on this target towards the end of the 3 year period (note: we are currently in the first year of the 3 year stretch target programme). There were also 38 My Choice Homebuy and Open Market Homebuy completions in RBWM in 2008/9. These are where qualifying people can get an equity loan to help them buy a home on the open market they wouldn't otherwise be able to afford. These have not been included in the LAA target. The My Choice Homebuy (the current product of this type) has proved very successful.	<p>08/09 Q1 08/09 Q2 08/09 Q3 08/09 Q4</p> <p>—●— Results (Quarterly) Trend Line (Linear)</p>	On Target
NI 163	NI 163 Proportion of population aged 16-64 for males and 19-59 for females qualified to at least Level 2 or higher	Angela Wellings	Cllr Dudley	High	77.60%	Annual	78.2% (for calendar year 2007)					78.50%	79.60%	81.10%	This is a national target undertaken by providers who are funded to deliver accredited courses. The majority of courses will be delivered through Train to Gain. The baseline for 2006-07 was 77.6%. Updated to include data from DIUS in Aug 08. 78.2% is for calendar year of 2007. 2008 data is not available until end of Nov 09.		Not Available
NI 164	NI 164 Proportion of population aged 19-64 for males and 19-59 for females qualified to at least Level 3 or higher	Angela Wellings	Cllr Dudley	High	59.20%	Annual	61% (for calendar year 2007)					59.90%	61.20%	63.20%	This is a national target undertaken by providers who are funded to deliver accredited courses. The majority of learners will be delivered through Train to Gain. Updated to include data from DIUS in Aug 08. 61.0% is for calendar year of 2007. 2008 data is not available until end of Nov 09.		Not Available
NI 177	NI 177 Local bus and light rail passenger journeys originating in the authority area	Stephen Brown	Cllr Rayner	High	1,528,505 (from BVPI 102)	Quarterly cumulative (quarterly figure as shown in brackets)	419,994	899,041 (479,047)	1,316,786 (417,745)	1,692,691 (375,905)		1,485,000	1,527,000	1,550,000	Over the last 4 years we have experienced a steady increase in take up (particularly in Maidenhead). The new English national concessionary fares scheme for the elderly are likely to further increase passenger numbers. (2007/08 figure - 1,528,505). This indicator measures the total number of local bus passenger journeys originating in the authority area in a given year. Local bus services are defined for the purposes of this indicator as those using one or more public service vehicles for the carriage of passengers by road at separate fares where the stopping places, or journey length, are less than 15 miles (24 kilometres) apart. Targets are being exceeded, partly due to free national travel for OAPs in addition to underlying growth. The Maidenhead bus contract has been re-tendered to obtain a better programme in matching passenger journeys such as more direct bus routes to St Marks Hospital in Maidenhead	<p>08/09 Q1 08/09 Q2 08/09 Q3 08/09 Q4</p> <p>—●— Results (Quarterly) Trend Line (Linear)</p>	On Target

Ref	National Indicators	Lead Officer	Lead Member	Good is High or Low	Results 2007/08	Collection Details	Quarterly Results for 2008/09 (Proxy measures have been developed where indicated)				Direction of travel (latest result compared to most recent results)	Targets 2008/09	Target 2009/10	Target 2010/11	Problems/Issues/Commentary (including trends)	Trend Analysis	Latest quarterly figure against yearly target		
							Q1	Q2	Q3	Q4									
NI 180	NI 180 The number of changes of circumstances which affect customers' Housing Benefit/ Council Tax Benefit entitlements within the year	Andrew Brooker	Cllr Kellaway	High	N/A (new indicator)	Annual		4766					Not Available	6556	8261	9047	The Benefits area have been talking to the DWP Performance team and they are aware of the difficulty that we have experienced last year in trying to achieve the target. We had a publicity drive to all existing customers last year and every claimant was sent a change of circumstances report form and a pre paid envelope . The exercise brought very little response from claimants. In agreement with the DWP Performance Team we are now planning a pro active exercise to start in June. The benefit caseload has been analysed and a programme of interventions will be made by a combination of ; outgoing telephone calls, home visits and postal review forms . The target for 2009/10 is 8261 changes of circumstances being calculated, which lead to a change in the amount of benefit being paid. The DWP performance team are being kept informed about the actions and plans we are progressing with.		Off Target
NI 181	NI 181 Time taken to process Housing Benefit/Council Tax Benefit new claims and change events	Andrew Brooker	Cllr Kellaway	Low	N/A (new indicator)	Annual		13.51 days					Not Available	15 days	12 days	10.5 days	DWP data reported here but not being used for comparative purposes. This is because different software suppliers have interpreted indicators in different ways. Targets continue to be seen as challenging given the national average of 15.7 days from other academy users		On Target
NI 186	NI 186 Per capita CO2 emissions in the LA area (indicator will comprise an annual measure of end user CO2 emissions across an agreed set of sectors - housing, road transport and business - measured as a % reduction or increase of the per capita CO2 emission from 2005 baseline year)	Terry Gould	Cllr Rayner	High	New indicator	Annual		Not Available (until Autumn 09)					Not Available	11.8% (6.8 tonnes)	12.4% (6.75 tonnes)	13% (6.7 tonnes)	Data for this indicator will be provided by Defra. This will not be published until Autumn 09. LAA stretch target of 3% over expected reductions. Indicator relies on centrally produced statistics to measure end user CO2 emissions in local area from business & public sector, domestic housing and road transport. Progress to date: Business & Public sector: Facilitated Business Link workshop for SME's; Carbon Trust 'Carbon Management Programme' action plan adopted; EST Fleet Review Report released and under discussion and integrating with LTP project. Feasibility of (i) installing renewable energy (PVpanels) on Town Hall roof; (ii) installing sub-metering and visual displays in civic buildings agreed by Sustainability panel (09/08). Quotes underway. New Climate Change Coordinator started in Jan 09. Presentations to Sus.Panel (11/08); LSP (11/08); DMT (11/08) Domestic Housing: RBWM has a new Energy Efficiency Officer to promote energy saving measures and availability of supporting grant aid via Warm Front Road Transport: EST Green Fleet Review released & under discussion and introduced for offices in Maidenhead & Windsor; draft staff travel plan written for 2009; projects completed by Transport Policy & Implementation Group towards reduction of car use in borough.		Not Available
NI 188	NI 188 Planning to Adapt to Climate Change (indicator measures progress on assessing and managing climate risks and opportunities and incorporating appropriate action into local authority and partners strategic planning. The level of preparedness is measured against 5 levels of performance)	Terry Gould	Cllr Rayner	High	New indicator	Annual		Level 1					Not Available	Level 1	Level 2	Level 3	RBWM reviewed our performance and submission to DEFRA. We have achieved Level 1 target as set. This is important as it is a LAA stretch target. Project Plan/achievement based. Progress during 2008/09: Climate Change Coordinator started in Jan 09; Corporate/partners attended a Climate Change Initiation workshop to kick start process for Climate Change Strategy; Presentations to Sustainability Panel (11/08), LSP (11/08) & DMT (11/08). During 2009, we are seeking to commission work that will drive us to achieve Level 2 and towards Level 3 by		On Target

Ref	National Indicators	Lead Officer	Lead Member	Good is High or Low	Results 2007/08	Collection Details	Quarterly Results for 2008/09 (Proxy measures have been developed where indicated)				Direction of travel (latest result compared to most recent results)	Targets 2008/09	Target 2009/10	Target 2010/11	Problems/Issues/Commentary (including trends)	Trend Analysis	Latest quarterly figure against yearly target
							Q1	Q2	Q3	Q4							
NI 198	NI 198 Children travelling to school – mode of travel usually used (This indicator measures the proportion of children of school age in full-time education travelling to school by the mode of transport that they normally used. The objective is to reduce the proportion who travel by car and increase the proportion travelling by other modes (i.e. walking, cycling and public transport)).	Tim Slaney	Cllr Rayner	Low	42.4% (06/07)	Annual	41.8% (provisional)					41% of children travelling to school by car	39% of children travelling to school by car	37% of children travelling to school by car	Year end data for 2008 is provisionally 41.8%. This is 0.8% over target, equivalent to around 140 pupils. The data are collected from state schools via School Census and from independent schools via 'hands-up' survey. Provisional results are available in spring each year, with official government figures released in summer (June). The following initiatives are helping to reduce car use for the school run: - 48 schools have already developed school travel plans, (15 in 2008/09) and several others are in the process of putting one together; - St Mary's Primary School was one of the first schools in Berkshire to achieve 'gold' accreditation for their travel plan under the School Travel Excellence Programme (STEP); - 27 schools are participating in the School Travel Reward Scheme (STaRS), which rewards pupils who regularly walk and cycle to school; - RBWM purchased 'Walk to School Week' resource packs for over 7,400 primary school pupils, with schools achieving participation rates of around 90% (despite the weather); - 8 schools benefited from 2008/09 Safer Routes to Schools funding - schemes included new ped. crossings, new ped. access routes, reduced speed limit, keep clear markings, waiting restrictions, signs and guard-rails.		Just Short
Non-LAA National Indicators by Exception (Off Target & Just Short)																	
NI 9	NI 9 Use of public libraries	Mark Taylor	Cllr Dudley	High	New	Annual	49.8%				Not Available	60%	61%	62%	The final result of 49.83% was produced from the annual Active People Survey. The result is based on the calendar year 2008. Based on proxy measure visits in a year, the total for 08/09 was 723,661 (Cumulative totals of physical visits to libraries) . This was Just Short of the target of 783,665 (8% below target). Note - usage will only be included if it is carried out during spare/leisure time, and not as part of full-time work, formal education or formal volunteering. Recovering from impact of refurbishment works at Maidenhead. Increasing 'virtual visits' will be reducing physical visits.		Off Target
NI 20	NI 20 Assault with injury crime rate (Number of 'Assaults with less serious injury' (including racially and religiously aggravated) offences per 1,000 population as a proxy for alcohol related violent offences) 'Assaults with less serious injury is defined as the following: Actual bodily harm and other injury; and racially or religiously aggravated actual bodily harm and other injury.	Dave Perkins (Brian Martin)	Cllr Rayner	Low	New	Quarterly cumulative (quarterly figure as shown in brackets)	1.51 (per 1000)	3.12 (per 1000)	4.33 (per 1000)	5.81 (per 1000)		5.63 per 1000 population		This has gone from On Target in Quarter 3 to Just Short in Quarter 4. We out turned just below last years figures but slightly worse than plan. There are no obvious causative factors.	<p>—●— Results (Quarterly) Linear (Results (Quarterly))</p>	Just Short	
NI 35	NI 35 Building resilience to violent extremism	Dave Perkins (Brian Martin)	Cllr Rayner	High	New	Quarterly cumulative	1.5	1.5	1.5	2		3.5 (on PVE Assessment Framework)	TBA	TBA	The end of year score for RBWM was 2 using the scale of 1 to 5 (with level 5 representing the highest standard for Prevent activity). There are four criteria in NI 35. The score for the four criteria's are: i) Understanding of, and engagement with, Local communities = 2 ii) Knowledge and understanding of the drivers and causes of violent extremism and the Prevent objectives = 1 iii) Development of a risk-based preventing violent extremism action plan, in support of delivery of the Prevent objectives = 1 iv) Effective oversight, delivery and evaluation of projects and actions = 2 New guidelines received from GOSE. Preventing Violent Extremism Steering Group (PVE) group recently held a meeting to discuss this. The only reason for the "underperformance" is a delay in establishing the PVE steering group. This is a sensitive area where it is better to proceed cautiously.		Off Target

Ref	National Indicators	Lead Officer	Lead Member	Good is High or Low	Results 2007/08	Collection Details	Quarterly Results for 2008/09 (Proxy measures have been developed where indicated)				Direction of travel (latest result compared to most recent results)	Targets 2008/09	Target 2009/10	Target 2010/11	Problems/Issues/Commentary (including trends)	Trend Analysis	Latest quarterly figure against yearly target
							Q1	Q2	Q3	Q4							
NI 46	NI 46 Young offenders access to suitable accommodation	Heather Andrews (Ray Preston)	Cllr Quick	High	Not Available	Quarterly	93%	96%	100%	95%		97%	98%	99%	Suitable & sustainable accommodation is another strong protective factor in the lives of young people. The YOT feel that it is vital that young people are suitable accommodated and as such have set a challenging target of 97%. Current performance is at 95% and the YOT are confident that they can sustain and improve this performance with their continued involvement with Housing.	<p>80% 85% 90% 95% 100%</p> <p>08/09 Q1 08/09 Q2 08/09 Q3 08/09 Q4</p> <p>—●— Results (Quarterly) Trend Line (Linear)</p>	Just Short
NI 52	NI 52 Take up of school lunches	Angela Wellings (Jill Thompson)	Cllr Quick	High	Not Available	Quarterly	34.44%	32.88%	33.27%	34.02%		35%	35% by August 2009	TBA	Uptake held up very well in spite of snow. From April 09 onwards, there will be a downturn due to pupils eating sandwiches from home on warmer days. Contractor offering "Grab Bags" to counter this trend (from May 09).	<p>0% 10% 20% 30% 40% 50%</p> <p>08/09 Q1 08/09 Q2 08/09 Q3 08/09 Q4</p> <p>—●— Results (Quarterly) Trend Line (Linear)</p>	Just Short
NI 59	NI 59 Percentage of initial assessments for children's social care carried out within 7 working days of referral	Heather Andrews	Cllr Quick	High	68%	Quarterly	59.10%	57.50%	61.00%	60.50%		70%			Performance scrutinised in weekly allocations meeting chaired by Service Manager, Assessment and Care Planning. 362 initial assessments completed within 7 days from a cohort of 598.	<p>0% 10% 20% 30% 40% 50% 60% 70% 80% 90%</p> <p>08/09 Q1 08/09 Q2 08/09 Q3 08/09 Q4</p> <p>—●— Results (Quarterly) Trend Line (Linear)</p>	Off Target
NI 62	NI 62 Stability of placements of looked after children: number of moves	Heather Andrews	Cllr Quick	Low	17.2%	Quarterly	1.3%	1.4%	3.8%	10.1%		10.0%			Despite we were just short of the target by 0.01%, 10.1% is considered very good performance.		Just Short
NI 63	NI 63 Stability of placements of looked after children: length of placement	Heather Andrews	Cllr Quick	High	66.7%	Quarterly	66.7%	71.4%	73.7%	71.4%		75.0%			This is a cumulative target. Cohort changes because children become looked after for 2.5 years / placement disruption / leave the care system. 15 children have been looked after in same placement for 2 years or more (from a cohort of 21). One additional child let care system than planned, who remains with the same carer but under Special Guardianship arrangements sanctioned by Court.	<p>0% 10% 20% 30% 40% 50% 60% 70% 80% 90%</p> <p>08/09 Q1 08/09 Q2 08/09 Q3 08/09 Q4</p> <p>—●— Results (Quarterly) Trend Line (Linear)</p>	Just Short
NI 64	NI 64 Child protection plans lasting 2 years or more	Heather Andrews	Cllr Quick	Low	0.0%	Quarterly	0.0%	0.0%	1.6%	1.1%		0.0%			Note: 0-10% denotes top performance range		Just Short
NI 65	NI 65 Percentage of children becoming the subject of a Child Protection Plan for a second or subsequent time	Heather Andrews	Cllr Quick	High	16.4%	Quarterly	5.6%	8.6%	5.6%	14.1%		14.0%			The banding for this indicator describes good performance as being between 10% and 15%. This is a cumulative target.		Just Short

Ref	National Indicators	Lead Officer	Lead Member	Good is High or Low	Results 2007/08	Collection Details	Quarterly Results for 2008/09 (Proxy measures have been developed where indicated)				Direction of travel (latest result compared to most recent results)	Targets 2008/09	Target 2009/10	Target 2010/11	Problems/Issues/Commentary (including trends)	Trend Analysis	Latest quarterly figure against yearly target
							Q1	Q2	Q3	Q4							
NI 68	NI 68 Percentage of referrals to children's social care going on to initial assessment	Heather Andrews	Cllr Quick	High	75.4%	Quarterly	66.3%	70.2%	76.0%	69.9%					<p>Legend: —●— Results (Quarterly) ····· Trend Line (Linear)</p>	Just Short	
NI 72	NI 72 Achievement of at least 78 points across the Early Years Foundation Stage with at least 6 in each of the scales in Personal Social and Emotional Development and Communication, Language and Literacy	Anna Crispin	Cllr Quick	High	44.7%	Annual	51.2% (based on academic year 2007/08)					56.10%	53.0% by August 2009		Targets and data refer to 2007-2008 academic year (set via speech and language therapy service exercise January 2007).		Just Short
NI 75	NI 75 Achievement of 5 or more A*-C grades at GCSE or equivalent including English and Maths (Threshold) PSA 10	Anna Crispin	Cllr Quick	High	54.9%	Annual	57.9% (based on academic year 2007/08)					59%	64% by August 2009		Performance refers to academic year 2007/08. Ongoing visits to schools to clarify intervention programme. Grant funding in response to school bids following analysis of need and development of intervention strategy.		Just Short
NI 92	NI 92 Narrowing the gap between the lowest achieving 20% in the Early Years Foundation Stage Profile and the rest	Anna Crispin	Cllr Quick	Low	33.4%	Annual	30.6%					29.9%	29.2% by August 2009		Targets and data refer to 2007-2008 academic year (set via speech and language therapy service exercise January 2007).		Just Short
NI 100	NI 100 Children in care reaching level 4 in Maths at Key Stage 2	Heather Andrews	Cllr Quick	High	50%	Annual	25% (based on academic year 2007/08)					50%			Cohort of 4 children, one child achieved level 4, one achieved level 3 (school predicted level 4). Both achieved level 5 in Science.		Off Target
NI 101	NI 101 Children in care achieving 5 A*-C GCSEs (or equivalent) at Key Stage 4 (including English and Maths)	Heather Andrews	Cllr Quick	High	0%	Annual	0% (based on academic year 2007/08)					13.00%			Cohort of 11 children, 3 profoundly disabled. 6 with 5-9 GCSE passes grade B-G. One with 4, one with 2. One child predicted 5 A-C achieved 3 A-C.		Off Target
NI 117	NI 117 16 to 18 year olds who are not in education, employment or training (NEET)	Cliff Turner	Cllr Quick	Low	4.1%	Annual	5.1%					4.1%	3.7% Nov 09	3.3% Nov 10	Current downturn in market may be affecting opportunities. Discussion on-going with Connexions about performance.		Off Target
NI 123	NI 123 16+ current smoking rate prevalence (reduce smoking in the number of people aged 16 or over)	Allan Brown/Health	Cllr Dudley	Low	430 (per 100,000 population)	Quarterly	117 (per 100,000)	209 (per 100,000)	318 (per 100,000)			597 (50 of these to be from the age group 16-24)	598 (50 of these to be from the age group 16-24)	599 (50 of these to be from the age group 16-24)	Data collection being reviewed by PCT - will generally be 2 months late in reporting. Quarter 4 data will not be available until early July 09.	<p>Legend: —●— Results (Quarterly) ····· Trend Line (Linear)</p>	Off Target (based on Qtr 3)
NI 132	NI 132 Timeliness of social care assessment (all adults) (users and carers should expect practical help and other support to arrive in a timely fashion soon after their problems have been referred to social services)	Allan Brown/Health	Cllr Dudley	High	83.7%	Quarterly	67.5%	67.1%	65.1%	77.4%		88.0%			Official final data for 2008/09 is not available via the Central Government Hub database until end of Aug 09. Major challenge. Significant pressure for acute discharge. Some teams have waiting lists.	<p>Legend: —●— Results (Quarterly) ····· Trend Line (Linear)</p>	Off Target
NI 133	NI 133 Timeliness of social care packages following assessment	Allan Brown/Health	Cllr Dudley	High	93%	Quarterly	91.3%	90.6%	90.6%	90.2%		93.0%			Despite we were just short of the target, 90.2% is in the top quartile performance. The data will be finalised at the end of Aug 09 via the Central Government Hub database.	<p>Legend: —●— Results (Quarterly) ····· Trend Line (Linear)</p>	Just Short

Ref	National Indicators	Lead Officer	Lead Member	Good is High or Low	Results 2007/08	Collection Details	Quarterly Results for 2008/09 (Proxy measures have been developed where indicated)				Direction of travel (latest result compared to most recent results)	Targets 2008/09	Target 2009/10	Target 2010/11	Problems/Issues/Commentary (including trends)	Trend Analysis	Latest quarterly figure against yearly target
							Q1	Q2	Q3	Q4							
NI 141	NI 141 Percentage of vulnerable people achieving independent living	Chris Thomas	Cllr Dudley	High	0.7273	Quarterly	83.33%	69.23%	22.22%					Qtr 4 data will not be available until 24 June 09. The data comes from the CLG. This indicator relates to temporary services for young people and measures whether service users moved on in a planned way and whether they had positive outcomes from the service. There were a spate of evictions over a few months which has caused this low result. There have been changes to the services and the projection for Quarter 1 2009/10 (April 09) is close to 100%.	<p>Results (Quarterly) Trend Line (Linear)</p>	Off Target (based on Qtr 3)	
NI 142	NI 142 Percentage of vulnerable people who are supported to maintain independent living	Chris Thomas	Cllr Dudley	High	0.9778	Quarterly	97.61%	97.27%	98.07%					Qtr 4 data will not be available until 24 June 09. The data comes from the CLG. This information was received from CLG. This indicator relates to long term services ie sheltered for older people and services for people with learning disabilities. The indicator is measure voids which fluctuate slight from time to time.	<p>Results (Quarterly) Trend Line (Linear)</p>	Just Short (based on Qtr 3)	
NI 149	NI 149 Adults in contact with secondary mental health services in settled accommodation	Allan Brown	Cllr Dudley	High	No definition	Quarterly cumulative	Not Available		77.3%	84.8%				New Indicator - data collection and reporting commenced October 08 as per government guidelines. Figures are cumulative.		Just Short	
NI 150	NI 150 Adults in contact with secondary mental health services in employment (the indicator is intended to measure improved employment outcomes for adults with mental health problems - a key group at risk of social exclusion)	Allan Brown	Cllr Dudley	High	No definition	Annual		2.7%						New Indicator - data collection and reporting commenced October 08 as per government guidelines. Figures are cumulative. The final data will not be finalised until end of Aug 09 via the Central Government's Hub database.		Off Target	
NI 178	NI 178 Bus services running on time	Stephen Brown	Cllr Rayner	High	New	Quarterly	62%	73%	68%	88%				Bus services in the Windsor are particularly susceptible to delays caused by ceremonial events The passenger transport team is entering into a "Punctuality Improvement Partnership" with the First Group and Courtney Coaches, the 2 main providers of bus services within the Borough. It is hoped that the increase in the last quarter can be sustained, and the partnerships contribute to this.	<p>Results (Quarterly) Trend Line (Linear)</p>	Just Short	
NI 195	NI 195 Improved street and environmental cleanliness (levels of litter, detritus, graffiti and fly posting): Levels of Detritus	Dave Perkins	Cllr Rayner	Low	New	Termly		12% (first third of year)	18%	14%				The final tranche of NI195 inspections for the year 2008/09 have been carried out and has been provided by DEFRA. The data will not be finalised via the Hub until end of Sept 09.		Off Target	
NI 195	NI 195 Improved street and environmental cleanliness (levels of litter, detritus, graffiti and fly posting): Levels of Graffiti	Dave Perkins	Cllr Rayner	Low	1.7	Termly		1% (first third of year)	2%	3%				as above		Off Target	
NI 196	NI 196 Improved street and environmental cleanliness – fly tipping	Dave Perkins	Cllr Rayner	Low	Grading 1 (Very Effective)	Annual		Grading 4 (Poor)						NI linked to DEFRA Flycapture DB audited by ENCAMS. Performance measured annually.		Off Target	