

### 3 Car Parking Results

#### 3.1 Introduction

- 3.1.1. The data collected by PBA focuses on the key car parks within the town centre, both within public and private control and as such covers the majority of the provision serving the town for all types of users; retail, business, local, residents, visitors and other users.

#### 3.2 Current Car Park Summary

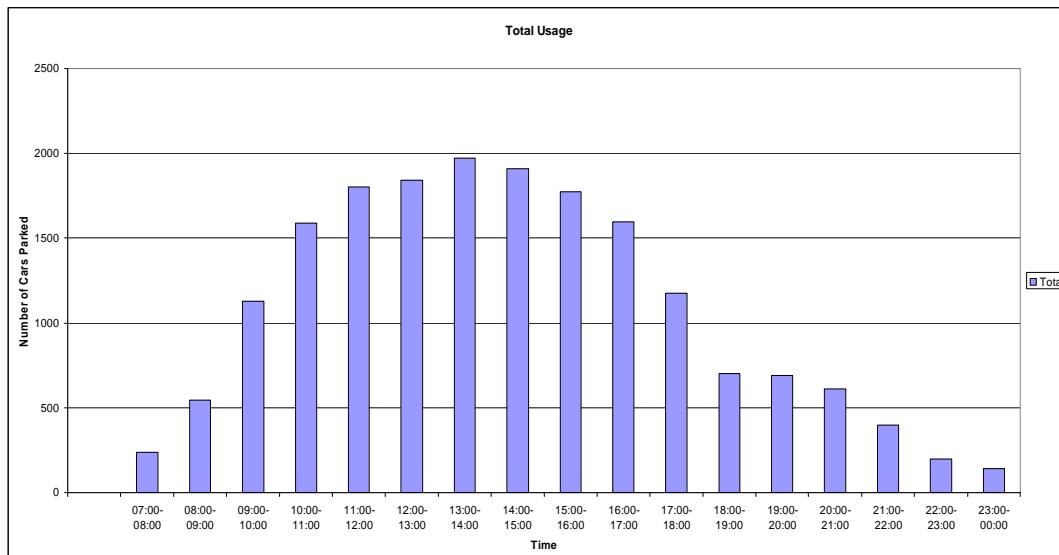
- 3.2.1. Below is a summary table of the number of available parking spaces at each of the car parks surveyed, for a general weekday and weekend.

Car Park	Weekday Spaces	Weekend Spaces
Alexandra Gardens	204	204
Alma Road	102	102
Windsor Dials (Private)	-	250
East Berkshire College (Private)	-	112
Home Park/Romney Lock	229	229
King Edward VII	193	193
River Street	145	145
Victoria Street	203	203
Windsor Leisure Centre	240	240
Windsor Library	15	15
York House	-	92
King Edward Court (Private)	926	926
Castle (Private)	121	121
<b>Total</b>	<b>2378</b>	<b>2832</b>

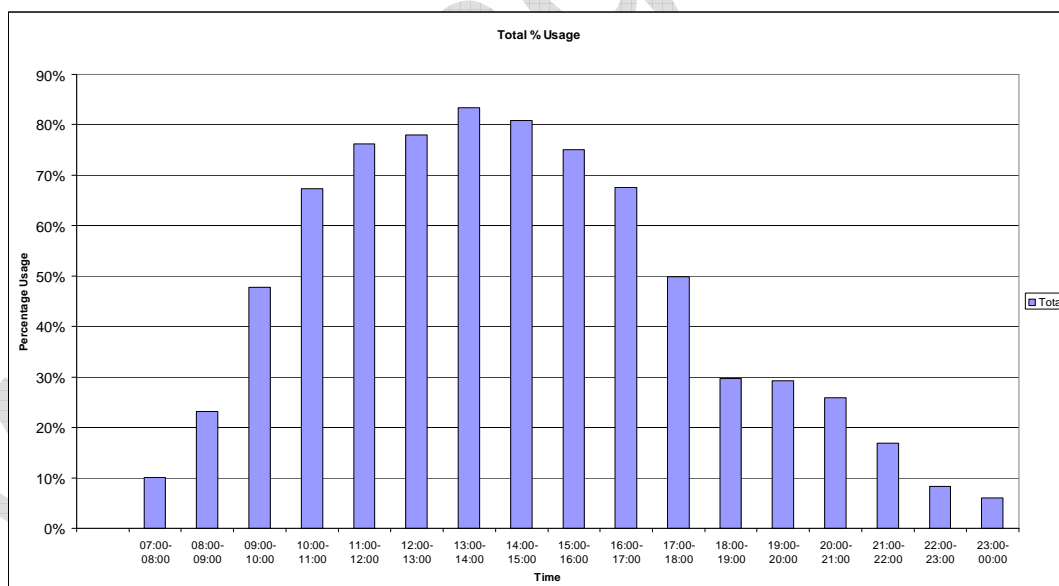
The plan 20812/002 shows the location of existing car parks within Windsor.

### 3.3 Survey Results for Thursday 6<sup>th</sup> March 2008

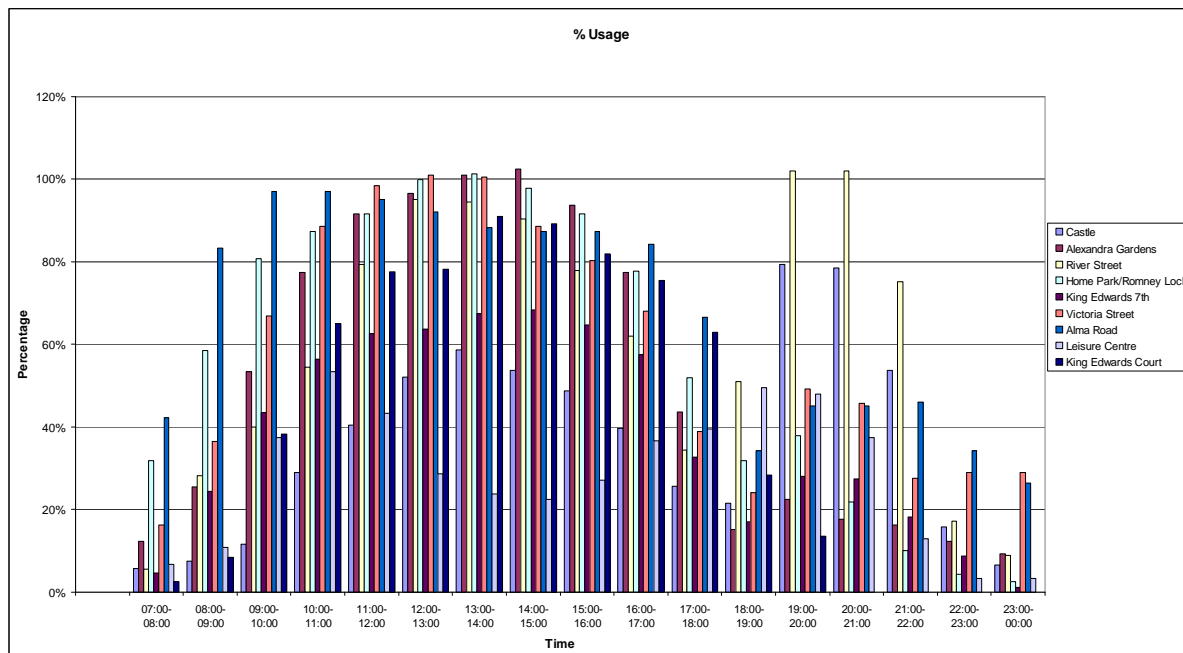
3.3.1. The overall picture of the car parks showed that the maximum number of vehicles occupying the car parks on the day of the survey was 1970, but the maximum capacity of all these car parks is 2363. This means that 83% of the spaces available were utilised.



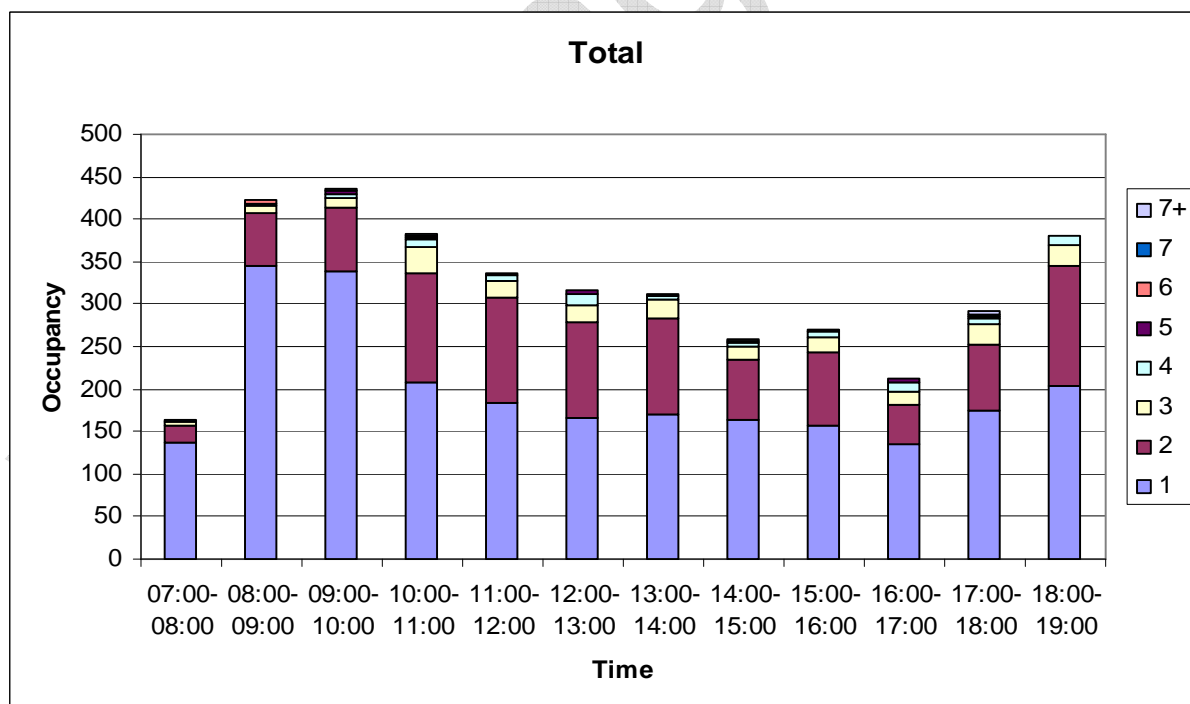
3.3.2. The surveys show that the car parks are generally not fully occupied; with the peak demand versus provision is around 80% occupied between 1pm and 3pm, with the night-time usage down to less than 10%.



3.3.3. However this does not show an accurate picture of the utilisation of the individual car parks. At some points during the day Alexandra Gardens, River Street, Home Park/ Romney Lock and Victoria Street are close to full occupation, with the River Street and Castle Car parks also heavily utilised at night compared to extremely low demand in the majority of other car parks.



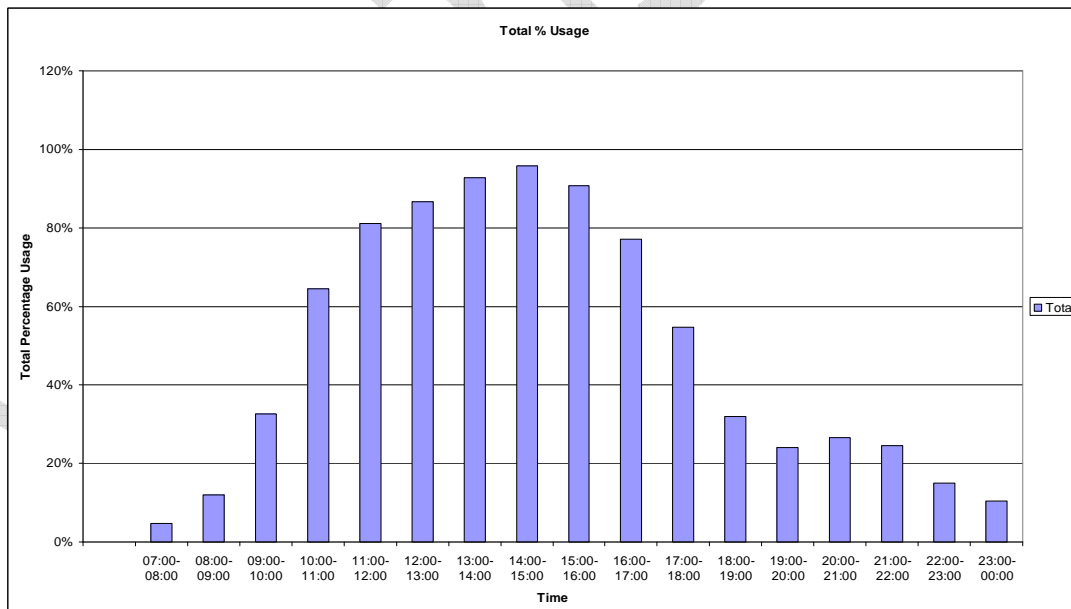
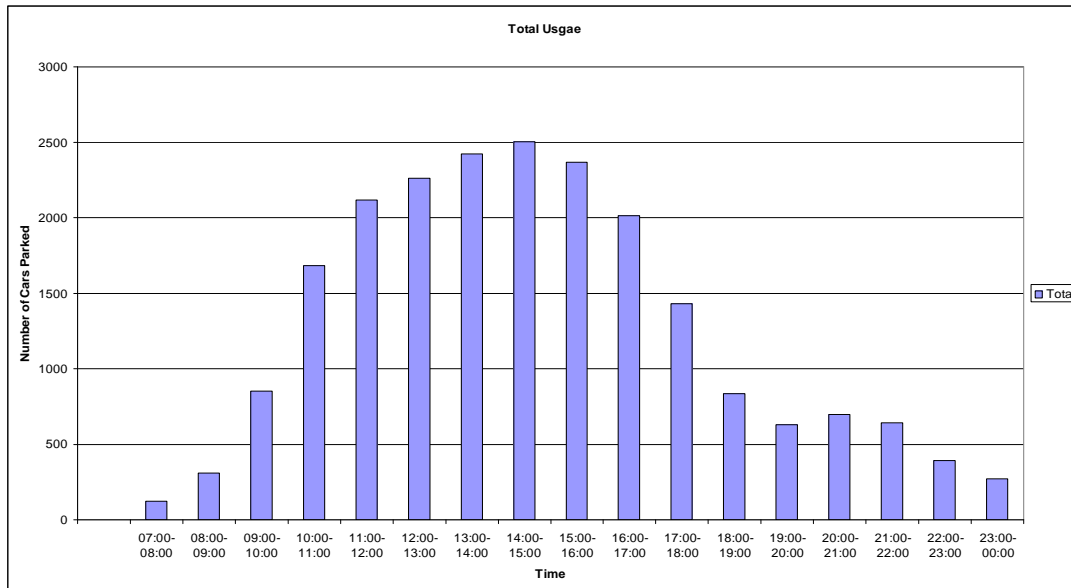
3.3.4. The occupancy survey carried out on the Thursday showed that the majority of vehicles entering the car parks have only a driver within them, this is most prominent in the am period between 7am to 10am, reinforcing the view that a high percentage of the town car parks are being utilised by employees/business to park on daily basis.



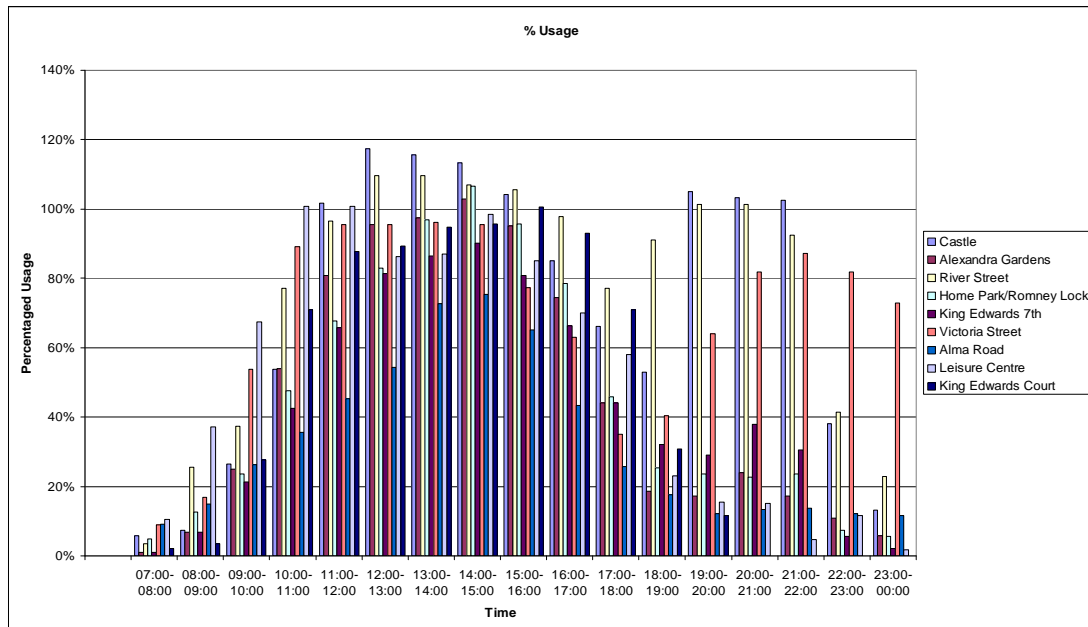
3.3.5. This is a key issue and highlights that potentially a high percentage of the Town Centre current parking stock is occupied all day by employees, hence these spaces are not available for use by other users such as retail, town centre and local economy, visitors, who the car parks are in principle designed to serve and accommodate.

### 3.4 Survey Results for Saturday 8<sup>th</sup> March 2008

3.4.1. The overall picture of the car parks showed that the maximum number of vehicles occupying the car parks on the day of the survey was 2501, but the maximum capacity of all these car parks is around 2613. This means that 96% of the spaces available were utilised for a short period of time between 1pm and 4pm.



3.4.2. However this does not show an accurate picture of the utilisation of the individual car parks. At some points during the day Castle, River Street, Home Park/ Romney Lock, Leisure Centre and King Edwards Court are at or over 100% usage with cars queuing to gain entry on the approach lanes and roads.



Working